

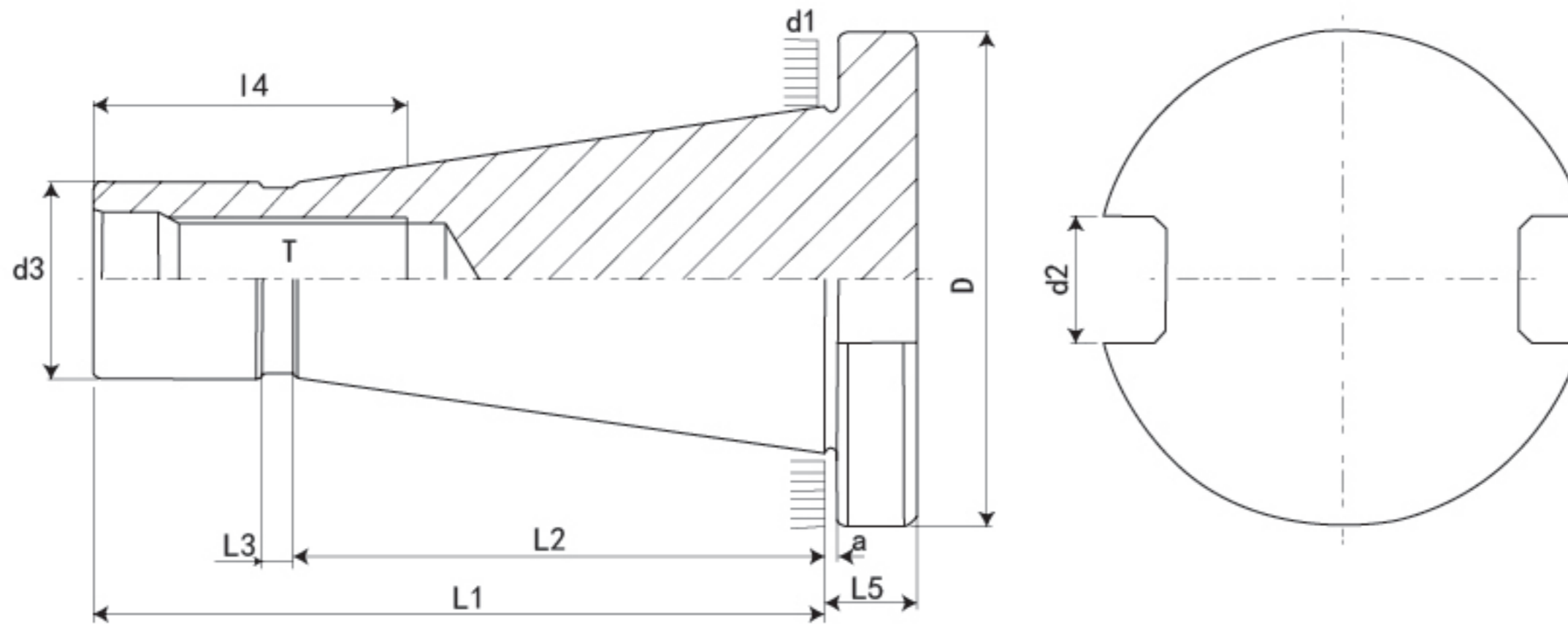
# NT

DIN 2080

PRECISION TOOL HOLDERS SYSTEM



**NT 数控刀柄系列**  
**CNC TOOL SYSTEMS**



規格 / 型號 Model	D 0 -0.4	d1	d2 H12	d3 Max.	a ± 0.2	L1	L2	L3	L4 Min	L5 ± 0.15	T 6H
NT30	49	31.75	16.1	17.04	1.6	68.4	48.4	3	24	8	1/2"W12 M12*1.75P 1/2"13UNC
NT40	63	44.45	16.1	24.92	1.6	93.4	65.4	5	32	10	5/8"W11 M16*2.0P
NT50	97.5	69.85	25.7	39.19	3.2	126.8	101.8	8	47	12	1"W8 M24*3.0P

特點:

- 錐度精度: <AT3
- 基本材質: JIS-SCM415
- 硬度: HRC56° 滲碳深度 >0.8mm
- 真圓度: <0.8um
- 表面粗糙度: Ra<0.5um
- 本體規範: DIN 2080

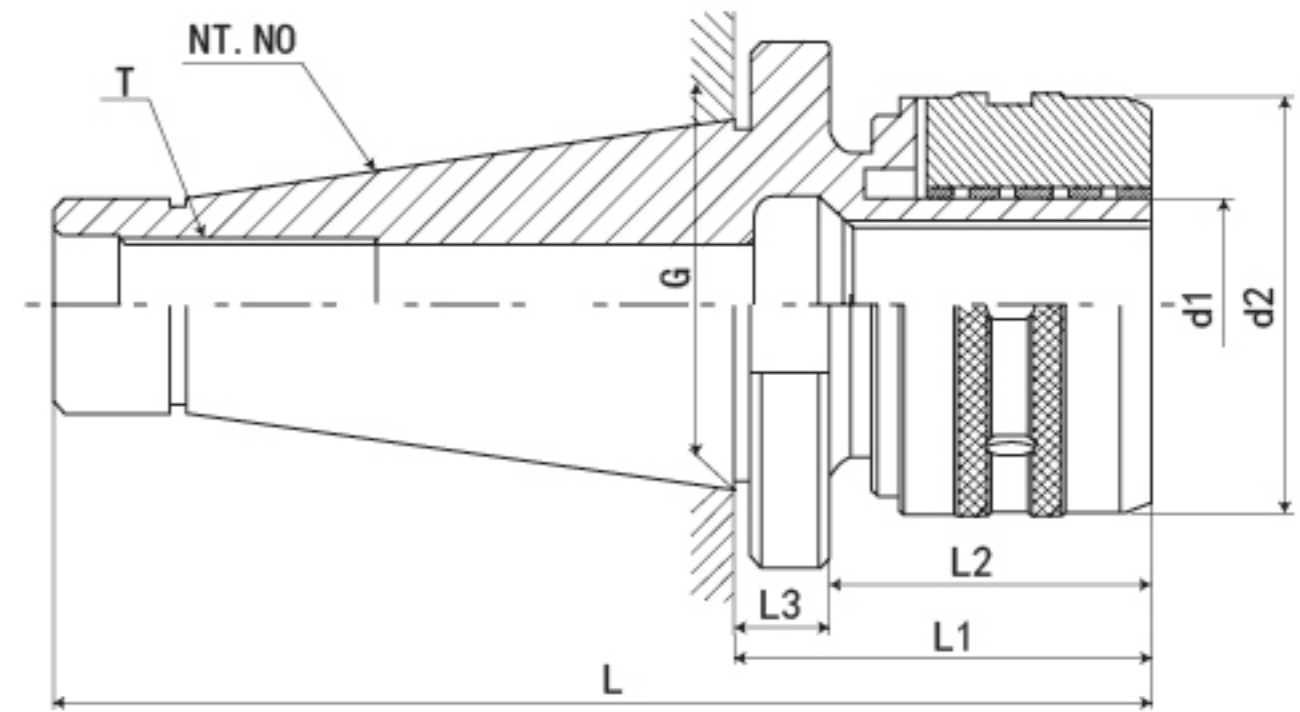
Features:

- Taper tolerance<AT3
- Basic Material:JIS-SCM415
- Hardness>HRC 56° Carbon depth>0.8mm
- Roundness<0.8um
- Surface roughness :Ra<0.5um
- Shank body standard : DIN2080

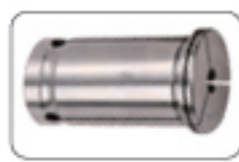
## NT-C 型高精度強力刀柄

## NT-C FORCE MILLING CHUCK

數控刀柄  
CNC TOOLS



P.131



P.116

規格 / 型號 Model	L	L1	L2	L3	d1	d2	T	G	重量 KGS	夾持範圍 Range
NT30-C20-80	148.4	80	69	11	20	56	M12*1.75P	31.75	2.0	3 4 5 6 8 10 12 14 16
NT30-C22-80	148.4	80	69	11	22	56	M12*1.75P	31.75	2.1	3 4 5 6 8 10 12 14 16
NT30-C25-80	148.4	80	69	11	25	61	M12*1.75P	31.75	2.3	3 4 5 6 8 10 12 14 16 18 20
NT30-C32-90	158.4	90	79	11	32	68	M12*1.75P	31.75	2.5	3 4 5 6 8 10 12 14 16 18 20 22 24 25
規格 / 型號 Model	L	L1	L2	L3	d1	d2	T	G	重量 KGS	夾持範圍 Range
NT40-C20-105	198.4	105	94	11	20	56	M16*2.0P	44.45	2.5	3 4 5 6 8 10 12 14 16
NT40-C22-105	198.4	105	94	11	22	56	M16*2.0P	44.45	2.6	3 4 5 6 8 10 12 14 16
NT40-C25-105	198.4	105	94	11	25	61	M16*2.0P	44.45	2.7	3 4 5 6 8 10 12 14 16 18 20
NT40-C32-105	198.4	105	94	11	32	68	M16*2.0P	44.45	2.8	3 4 5 6 8 10 12 14 16 18 20 22 24 25
規格 / 型號 Model	L	L1	L2	L3	d1	d2	T	G	重量 KGS	夾持範圍 Range
NT50-C25-105	231.8	105	90	15	25	61	M24*3.0P	69.85	5.2	3 4 5 6 8 10 12 14 16 18 20
NT50-C32-110	236.8	110	95	15	32	68	M24*3.0P	69.85	5.4	3 4 5 6 8 10 12 14 16 18 20 22 24 25
NT50-C42-120	246.8	120	105	15	42	78	M24*3.0P	69.85	6.2	3 4 5 6 8 10 12 14 16 18 20 22 24 25 28 30 32 34 36

### 特點:

高速、高精度、高壽命直柄刀具系列

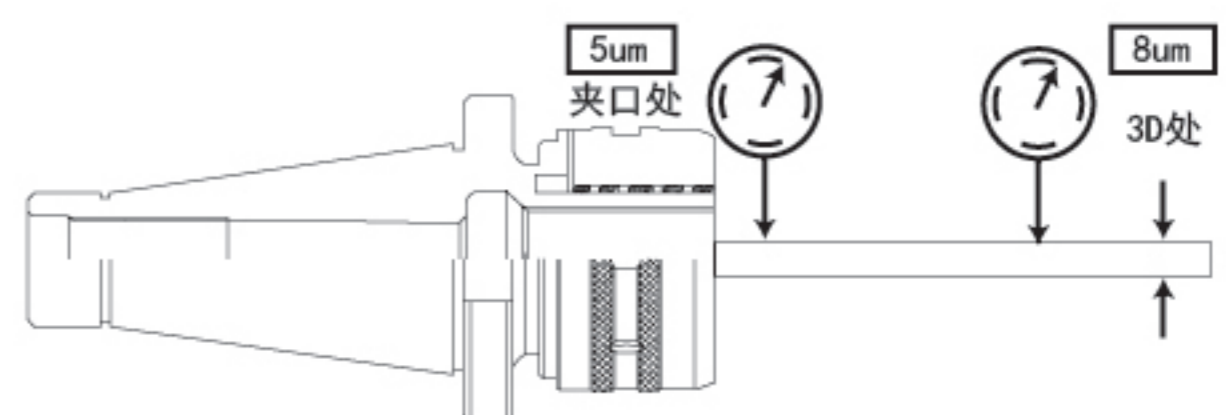
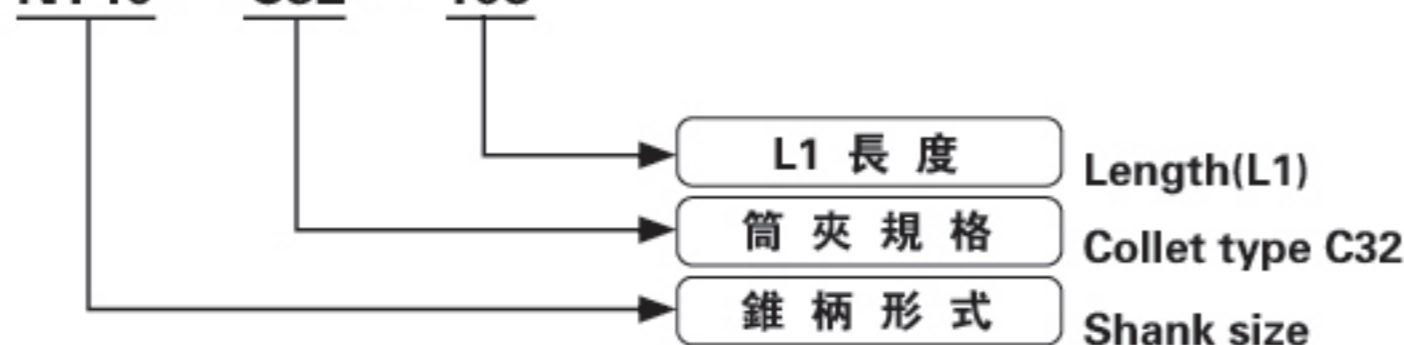
- 材質: 20CrMnTi/15CrMn
- 硬度: HRC58-60, 滲碳深度 > 0.8mm
- 錐柄公差等級: ≤ AT3
- 刀柄內孔分割了六槽, 以防止刀具轉動, 增大夾持力
- 採用特殊材料制作滾針軸承保持架, 延長使用壽命, 增強夾緊力
- 具有夾持力大, 定點精度高, 特別適用於強力切削
- 可提供兩種外觀: 光飾或塗層處理
- 內孔多次研磨, 可達 Ra0.4, 起到鏡面效果
- 外圓及端面多次研磨, 可達 Ra0.4, 起到鏡面效果
- 表面“環保”特殊塗層處理, 提高表面硬度、耐磨性, 提高清潔度, 精度更穩定, 表面更光滑, 防銹、防腐蝕效果更好, 手感更舒適, 外觀更美觀
- 扳手、筒夾須另行購買

### Features:

High speed, high accuracy, high durability C-STRAIGHT TOOL SERIES

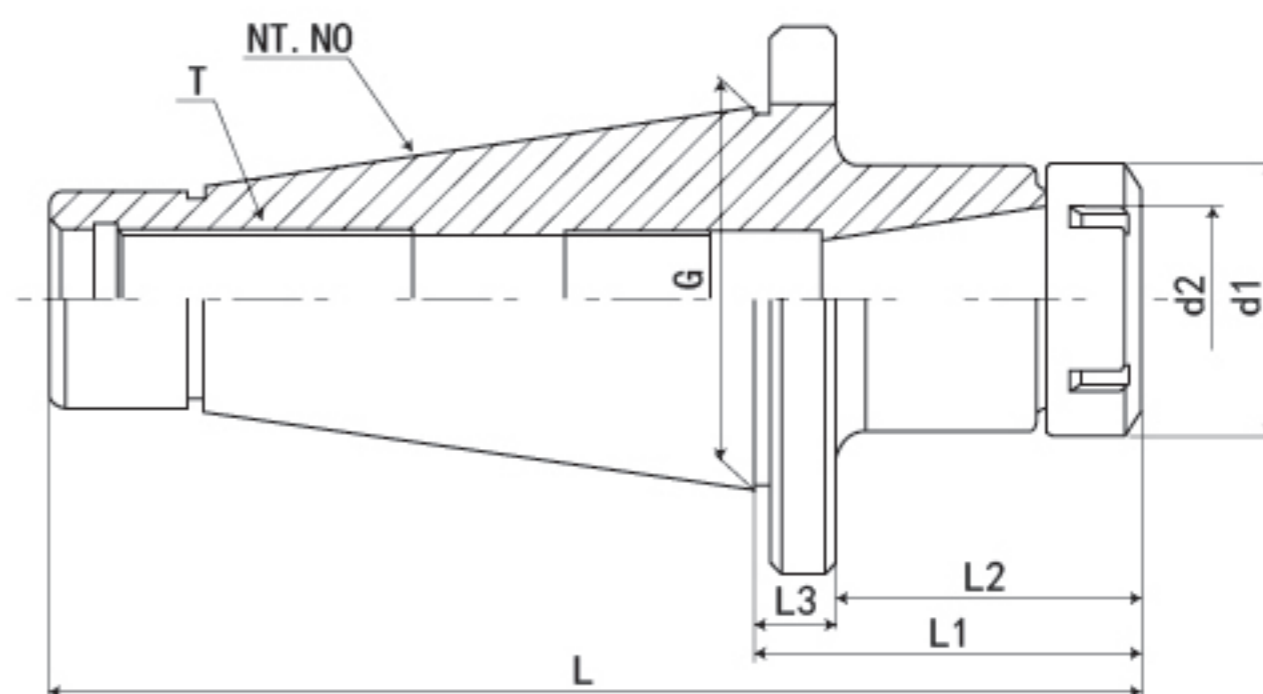
- Material: 20CrMnTi/15CrMn;
- Hardness: HRC58-60, Carbon depth > 0.8
- Tolerance class: ≤ AT3
- Inner hole of the shank divide into 6 troughs to prevent the insert remove, increase the grasp force
- Ball bearing cage is made of special material, improve the endurance, enhance the grasp force
- Grasp force strong, centering accuracy high, suit to heavy cutting
- Two kinds looks provide: polishing or chemical nickel-plating processing;
- Inner hole grinding for many times, so as to reach Ra0.4, has a mirror effect;
- End and the cylindrical are grinding for many times, can reach Ra0.4, has a mirror effect;
- Surface "environmental protection", special coating surface treatment, improve the hardness and endurance of the surface, cleanliness better, accuracy stable, surface more smooth, antirust, feel comfortable, appearance nice.
- The spanner、chuck must purchase alone.

NT40 - C32 - 105



# NT-ER 彈性筒夾刀柄

## NT-ER COLLET CHUCK



P.131



P.106



P.133

規格 / 型號 Model	L	L1	L2	L3	d1	d2	G	T	夾持範圍 Range
NT30-ER16-45	113.4	45	34	11	28	16	31.75	M12*1.75P	1-10mm
NT30-ER20-45	113.4	45	34	11	34	20	31.75	M12*1.75P	1-13mm
NT30-ER25-55	123.4	55	44	11	42	25	31.75	M12*1.75P	1-16mm
NT30-ER32-60	128.4	60	49	11	50	32	31.75	M12*1.75P	2-20mm
NT30-ER40-70	138.4	70	59	11	63	40	31.75	M12*1.75P	2-26mm
規格 / 型號 Model	L	L1	L2	L3	d1	d2	G	T	夾持範圍 Range
NT40-ER16-45	138.4	45	34	11	28	16	44.45	M16*2.0P	1-10mm
NT40-ER20-45	138.4	45	34	11	34	20	44.45	M16*2.0P	1-13mm
NT40-ER25-55	148.4	55	44	11	42	25	44.45	M16*2.0P	1-16mm
NT40-ER32-60	153.4	60	49	11	50	32	44.45	M16*2.0P	2-20mm
NT40-ER40-70	163.4	70	59	11	63	40	44.45	M16*2.0P	2-26mm
NT40-ER50-80	173.4	80	69	11	78	50	44.45	M16*2.0P	6-34mm
規格 / 型號 Model	L	L1	L2	L3	d1	d2	G	T	夾持範圍 Range
NT50-ER11-100	226.8	100	85	15	19	11	69.85	M24*3.0P	1-7mm
NT50-ER16-100	226.8	100	85	15	28	16	69.85	M24*3.0P	1-10mm
NT50-ER20-100	226.8	100	85	15	34	20	69.85	M24*3.0P	1-13mm
NT50-ER25-100	226.8	100	85	15	42	25	69.85	M24*3.0P	1-16mm
NT50-ER32-75	201.8	75	60	15	50	32	69.85	M24*3.0P	2-20mm
NT50-ER32-100	226.8	100	85	15	50	32	69.85	M24*3.0P	2-20mm
NT50-ER40-80	206.8	80	65	15	63	40	69.85	M24*3.0P	2-26mm
NT50-ER40-100	226.8	100	85	15	63	40	69.85	M24*3.0P	2-26mm
NT50-ER50-80	206.8	80	65	15	78	50	69.85	M24*3.0P	6-34mm
NT50-ER50-100	226.8	100	85	15	78	50	69.85	M24*3.0P	6-34mm

### 特點:

注:

- 本體錐柄規格: GB3837/DIN2080
- 配用 ER 彈性筒夾, 可適用於夾持銑刀、鑽頭、絲錐
- 裝置時筒夾必需先置入螺母, 再裝入刀具, 接着鎖固入本體
- 適用專用扳手, 不可用其它工具, 可能造成刀體損壞
- 扳手、筒夾須另行購買

### Features:

- Spindle conicity standard:GB3837/DIN2080
- ER collet chuck set with ER collet with flexibility used for gripping cutting tool, drill bit, draw bolt and so on.
- When using, nut should be clamped tensed firstly with cutting tools then locked into the main body.
- Always use the recommended wrench or spanner, unless, there might cause damage of cutting tools.
- The spanner、chuck must purchase alone.

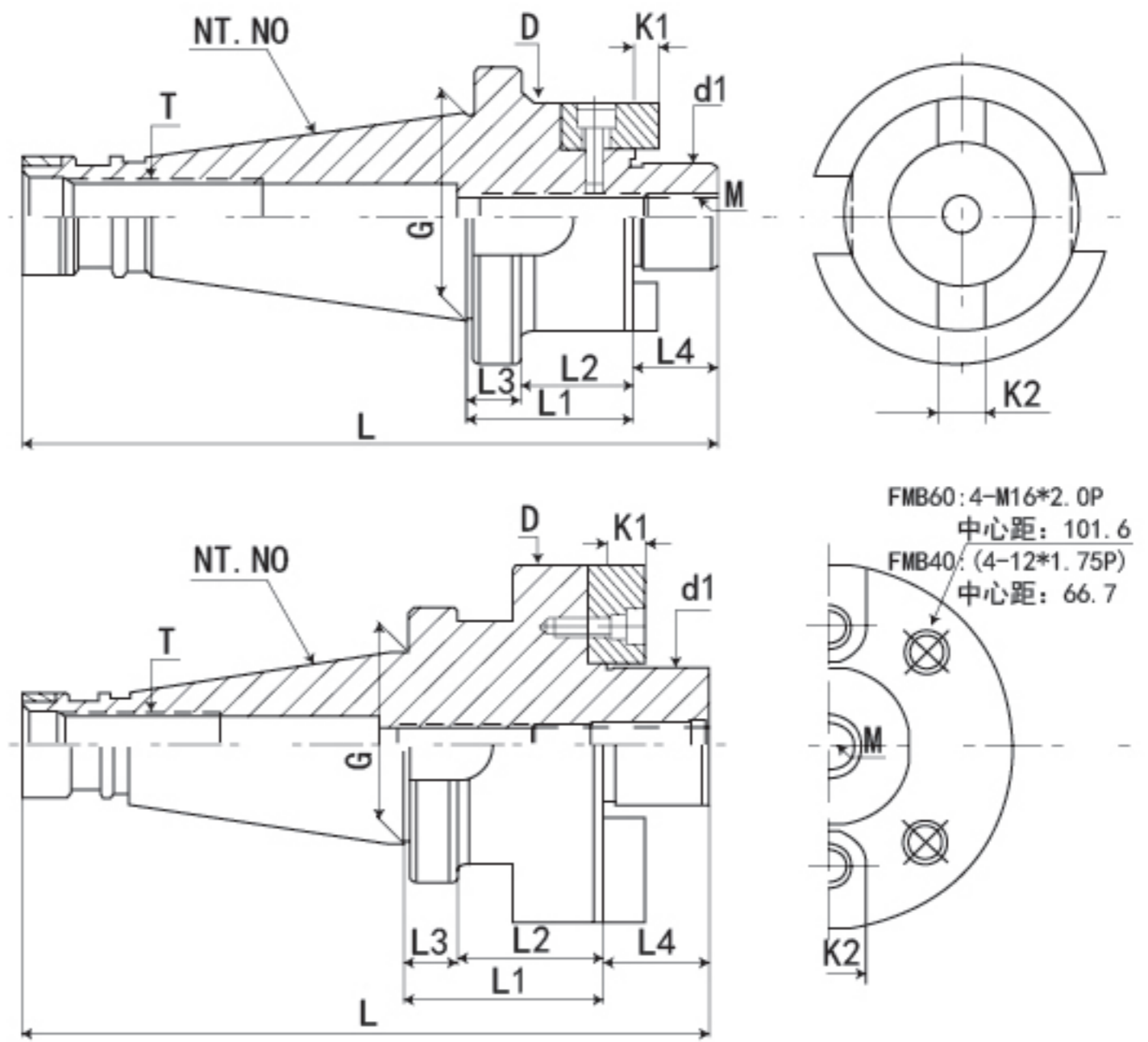
## NT-FMB 平面銑刀柄

## NT-FMB FACE MILL ARBOR

數控刀柄  
CNC TOOLS



P.L02



規格 / 型號 Model	L	L1	L2	L3	L4	D	d1	K1	K2	G	T	M	重量 KGS
NT30-FMB22-35	121.4	35	24	11	18	48	22	4.8	10	31.75	M12*1.75P	M10*1.5P	0.67
NT30-FMB27-35	123.4	35	24	11	20	58	27	5.8	12	31.75	M12*1.75P	M12*1.75P	1.0
NT30-FMB32-35	125.4	35	24	11	22	70	32	6.8	14	31.75	M12*1.75P	M16*2.0P	1.2
NT30-FMB40-35	128.4	35	24	11	25	80	40	8.3	16	31.75	M12*1.75P	M16*2.0P	1.4
規格 / 型號 Model	L	L1	L2	L3	L4	D	d1	K1	K2	G	T	M	重量 KGS
NT40-FMB22-45	156.4	45	34	11	18	48	22	4.8	10	44.45	M16*2.0P	M10*1.5P	1.4
NT40-FMB27-45	158.4	45	34	11	20	58	27	5.8	12	44.45	M16*2.0P	M12*1.75P	1.6
NT40-FMB32-45	160.4	45	34	11	22	70	32	6.8	14	44.45	M16*2.0P	M16*2.0P	1.85
NT40-FMB40-45	163.4	45	34	11	25	80	40	8.3	16	44.45	M16*2.0P	M16*2.0P	2.7
規格 / 型號 Model	L	L1	L2	L3	L4	D	d1	K1	K2	G	T	M	重量 KGS
NT50-FMB22-45	189.8	45	30	15	18	48	22	4.8	10	69.85	M24*3.0P	M10*1.5P	3.5
NT50-FMB22-60	204.8	60	45	15	18	48	22	4.8	10	69.85	M24*3.0P	M10*1.5P	3.6
NT50-FMB22-100	244.8	100	85	15	18	48	22	4.8	10	69.85	M24*3.0P	M10*1.5P	4.0
NT50-FMB27-45	191.8	45	30	15	20	58	27	5.8	12	69.85	M24*3.0P	M12*1.75P	3.9
NT50-FMB27-60	206.8	60	45	15	20	58	27	5.8	12	69.85	M24*3.0P	M12*1.75P	4.0
NT50-FMB27-100	246.8	100	85	15	20	58	27	5.8	12	69.85	M24*3.0P	M12*1.75P	4.1
NT50-FMB32-45	193.8	45	30	15	22	70	32	6.8	14	69.85	M24*3.0P	M16*2.0P	4.0
NT50-FMB32-60	208.8	60	45	15	22	70	32	6.8	14	69.85	M24*3.0P	M16*2.0P	4.2
NT50-FMB32-100	248.8	100	85	15	22	70	32	6.8	14	69.85	M24*3.0P	M16*2.0P	4.5
NT50-FMB40-45	196.8	45	30	15	25	80	40	8.3	16	69.85	M24*3.0P	M16*2.0P	4.83
NT50-FMB40-60	211.8	60	45	15	25	80	40	8.3	16	69.85	M24*3.0P	M16*2.0P	5.2
NT50-FMB40-100	251.8	100	85	15	25	80	40	8.3	16	69.85	M24*3.0P	M16*2.0P	5.5
NT50-FMB60-60	211.8	60	45	15	25	128.75	60	12.5	25.4	69.85	M24*3.0P	M16*2.0P	8.5

### 特點:

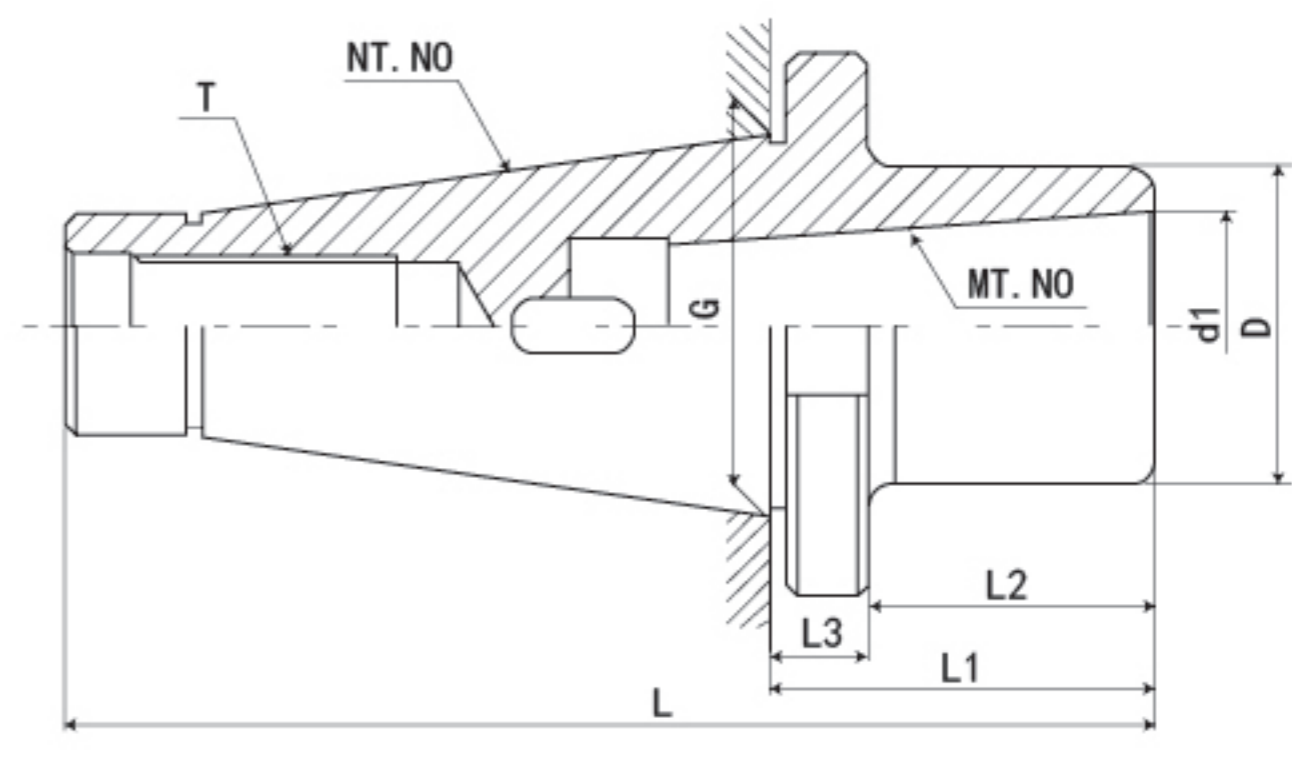
注:

- 本體錐柄規格: GB3837/DIN2080
- 中心通孔有利于出水及抗震性强
- 平面銑刀配合部位 (d) 軸系公軸 h6
- 適用於平面銑削加工
- 可定制非常規長度

### Features:

- Spindle conicity standard: GB3837/DIN2080
- With water through design that reduces vibration and steady for cutting.
- Connecting part(d) designed for metric size.
- Tool holders with BT shank for face mill chuck, Face mill holders equipped with screws and drive keys to assemble the mill cutter to holder.
- Can be made upon requested dimensions.

# NT-MTA 帶扁尾莫氏刀柄 NT-MTA TAPER ADAPTER (MORSE)



CNC TOOLS  
數控刀柄

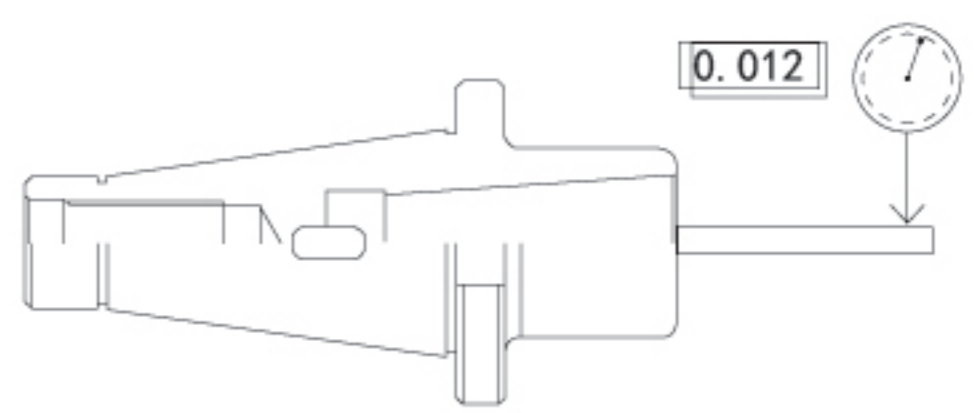
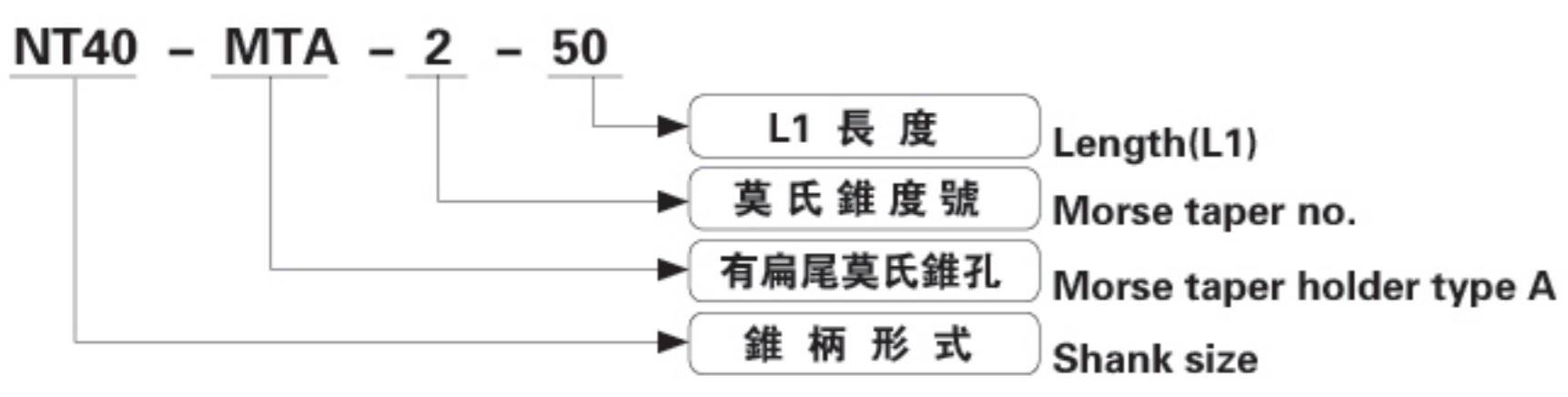
規格 / 型號 Model	L	L1	L2	L3	D	d1	G	夾持鑽頭範圍	T
NT30-MTA1-50	118.4	50	39	11	25	12.065	31.75	φ 2- φ 14	M12*1.75P
NT30-MTA2-50	118.4	50	39	11	32	17.780	31.75	φ 14- φ 23	M12*1.75P
NT30-MTA3-70	138.4	70	59	11	40	23.825	31.75	φ 23- φ 32	M12*1.75P
規格 / 型號 Model	L	L1	L2	L3	D	d1	G	夾持鑽頭範圍	T
NT40-MTA1-50	143.4	50	39	11	25	12.065	44.45	φ 2- φ 14	M16*2.0P
NT40-MTA2-50	143.4	50	39	11	32	17.780	44.45	φ 14- φ 23	M16*2.0P
NT40-MTA3-65	158.4	65	54	11	40	23.825	44.45	φ 23- φ 32	M16*2.0P
NT40-MTA4-90	183.4	90	79	11	48	31.267	44.45	φ 32- φ 50	M16*2.0P
規格 / 型號 Model	L	L1	L2	L3	D	d1	G	夾持鑽頭範圍	T
NT50-MTA1-45	171.8	45	30	15	25	12.065	69.85	φ 2- φ 14	M24*3.0P
NT50-MTA2-55	181.8	55	40	15	32	17.780	69.85	φ 14- φ 23	M24*3.0P
NT50-MTA3-65	191.8	65	50	15	40	23.825	69.85	φ 23- φ 32	M24*3.0P
NT50-MTA4-70	196.8	70	55	15	48	31.267	69.85	φ 32- φ 50	M24*3.0P
NT50-MTA5-105	231.8	105	90	15	70	44.399	69.85	φ 50- φ 75	M24*3.0P
NT50-MTA6-170	296.8	170	155	15	85	63.348	69.85	φ 75- φ 100	M24*3.0P
NT50-MTA6-270	396.8	270	255	15	85	63.348	69.85	φ 75- φ 100	M24*3.0P

### 特點:

- 注:
- 本體錐柄規格: GB3837/DIN2080
  - 刀柄用于莫氏錐柄刀具、鑽頭、鉸刀等
  - 鑽頭莫氏柄和刀具直徑

### Features:

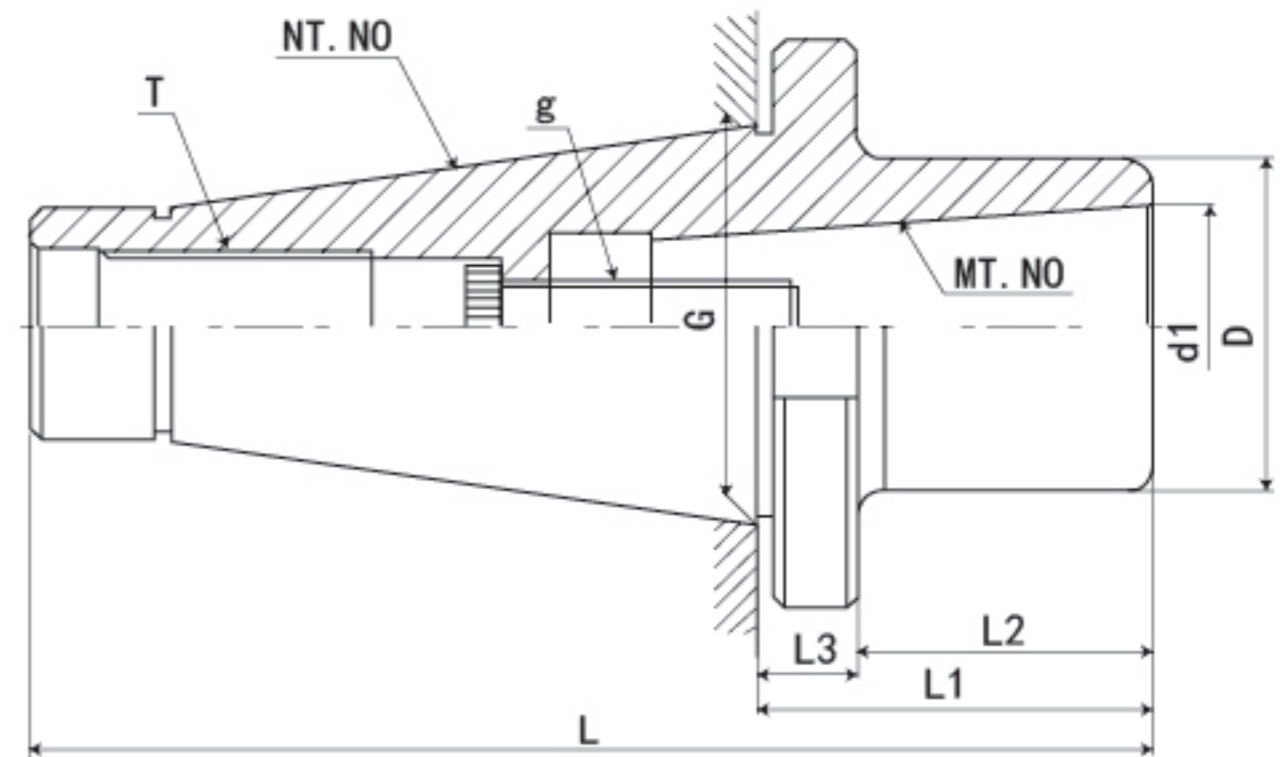
- Spindle conicity standard: GB3837/DIN2080
- Used in Morse conicity tools, drill chuck, reamer and so on.
- Dimensions



## NT-MTB 無扁尾莫氏刀柄

## NT-MTB MORSE TAPER HOLDER

數控刀柄  
CNC TOOLS



規格 / 型號 Model	L	L1	L2	L3	D	d1	G	g	夾持銑刀範圍	T
NT30-MTB1-50	118.4	50	39	11	25	12.065	31.75	M6	φ 10-φ 14	M12*1.75P
NT30-MTB2-50	118.4	50	39	11	32	17.780	31.75	M10	φ 16-φ 22	M12*1.75P
NT30-MTB3-70	138.4	70	59	11	40	23.825	31.75	M12	φ 24-φ 32	M12*1.75P
規格 / 型號 Model	L	L1	L2	L3	D	d1	G	g	夾持銑刀範圍	T
NT40-MTB1-50	143.4	50	39	11	25	12.065	44.45	M6	φ 10-φ 14	M16*2.0P
NT40-MTB2-50	143.4	50	39	11	32	17.780	44.45	M10	φ 16-φ 22	M16*2.0P
NT40-MTB3-65	158.4	65	54	11	40	23.825	44.45	M12	φ 24-φ 32	M16*2.0P
NT40-MTB4-90	183.4	90	79	11	48	31.267	44.45	M16	φ 32-φ 50	M16*2.0P
規格 / 型號 Model	L	L1	L2	L3	D	d1	G	g	夾持銑刀範圍	T
NT50-MTB1-45	171.8	45	30	15	25	12.065	69.85	M6	φ 10-φ 14	M24*3.0P
NT50-MTB2-55	181.8	55	40	15	32	17.780	69.85	M10	φ 16-φ 22	M24*3.0P
NT50-MTB3-65	191.8	65	50	15	40	23.825	69.85	M12	φ 24-φ 32	M24*3.0P
NT50-MTB4-70	196.8	70	55	15	48	31.267	69.85	M16	φ 32-φ 50	M24*3.0P
NT50-MTB5-105	231.8	105	90	15	70	44.399	69.85	M20	φ 40-φ 75	M24*3.0P
NT50-MTB6-170	296.8	170	155	15	85	63.348	69.85	M24	φ 75-φ 100	M24*3.0P
NT50-MTB6-270	396.8	270	255	15	85	63.348	69.85	M24	φ 75-φ 100	M24*3.0P

### 特點:

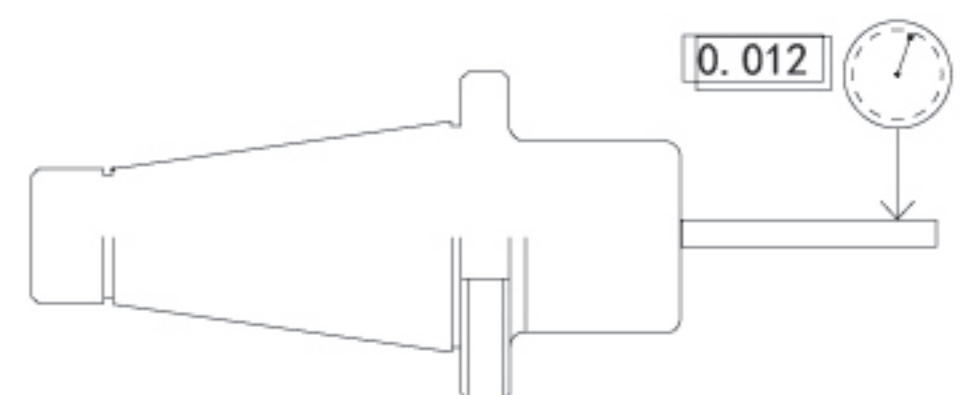
注:

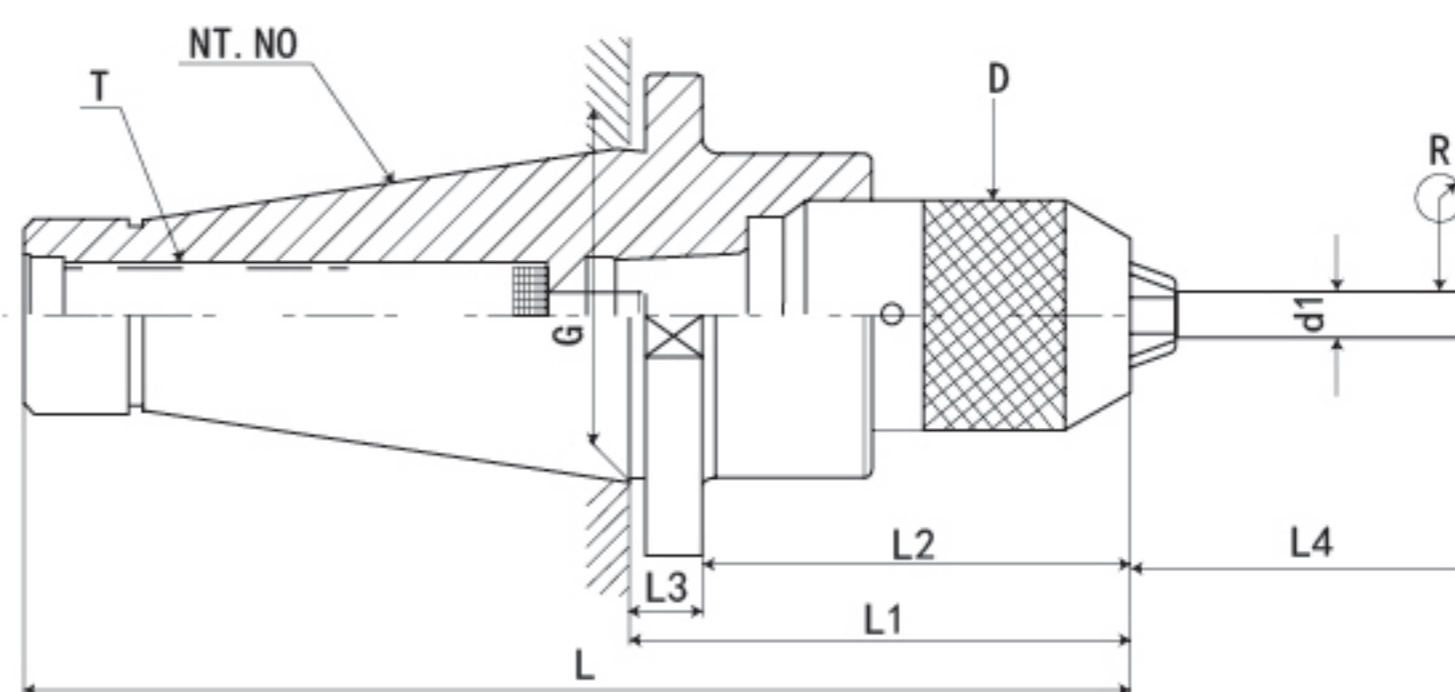
- 本體錐柄規格: GB3837/DIN2080
- 刀柄用于莫氏錐柄銑刀

### Features:

- Spindle conicity standard: GB3837/DIN2080
- Dimensions

NT40 - MTB - 2 - 50



**NT-APU 一體式鑽夾頭刀柄**
**NT-APU DRILL CHUCK HOLDER**


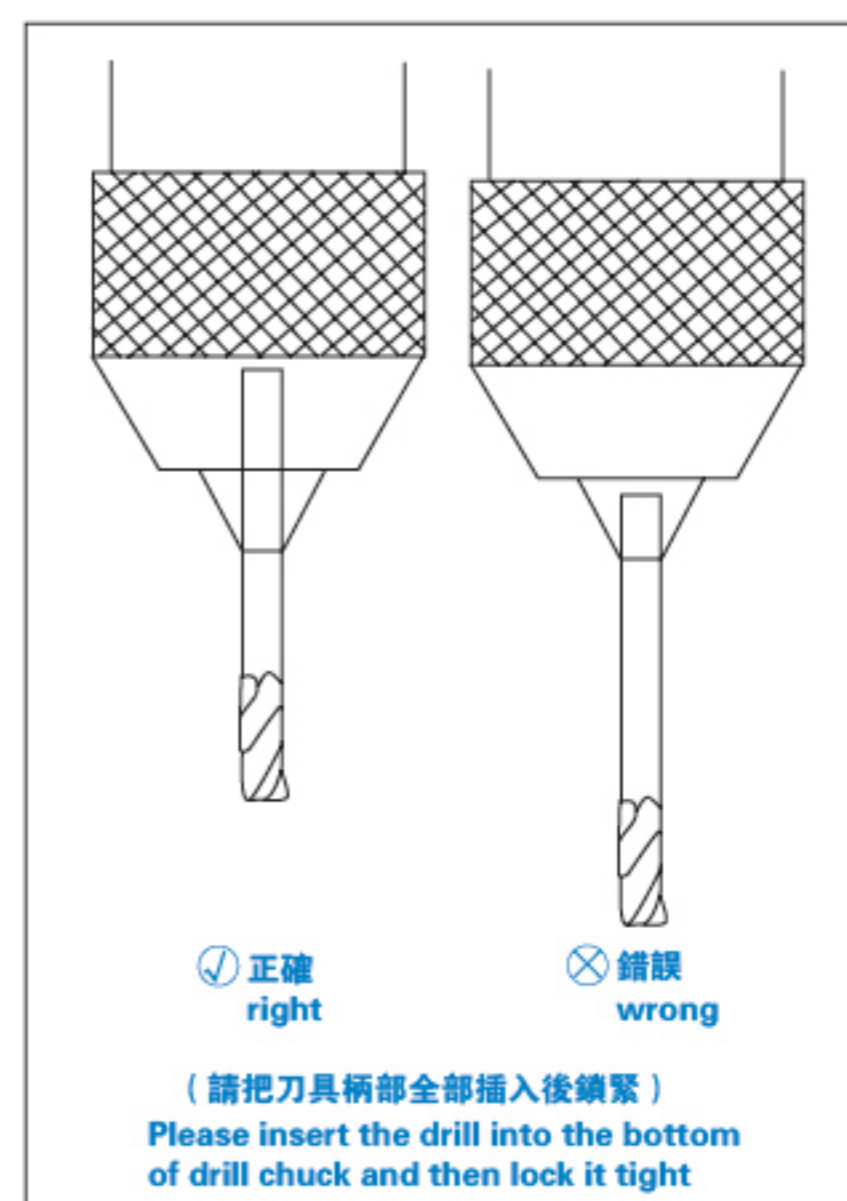
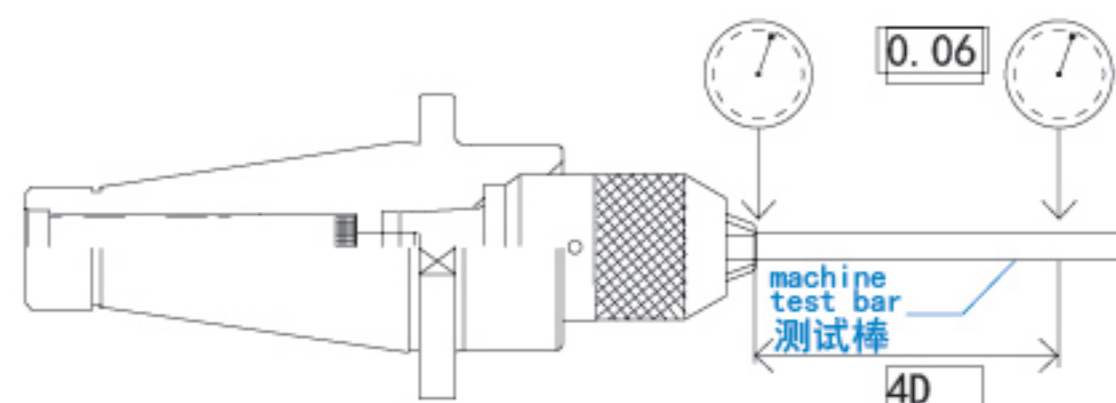
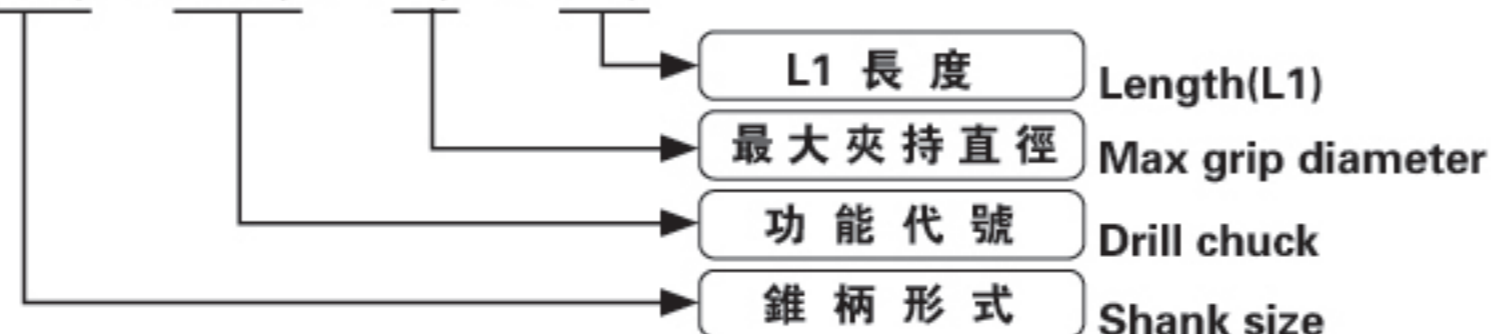
規格 / 型號 Model	L	L1	L2	L3	L4	R	D	d1	G	T	夾持範圍 Range
NT30-APU08-80	148.4	80	69	11	55	0.08	37	8	31.75	M12*1.75P	0-8mm
NT30-APU13-100	168.4	100	89	11	75	0.08	50	13	31.75	M12*1.75P	1-13mm
NT30-APU16-110	178.4	110	99	11	80	0.08	57	16	31.75	M12*1.75P	1-16mm
NT40-APU08-80	173.4	80	69	11	55	0.08	37	8	44.45	M16*2.0P	0-8mm
NT40-APU13-100	193.4	100	89	11	75	0.08	50	13	44.45	M16*2.0P	1-13mm
NT40-APU16-110	203.4	110	99	11	80	0.08	57	16	44.45	M16*2.0P	1-16mm
NT50-APU13-110	236.8	110	95	15	75	0.08	50	13	69.85	M24*3.0P	1-13mm
NT50-APU16-120	246.8	120	105	15	80	0.08	57	16	69.85	M24*3.0P	1-16mm

**特點:**
**注:**

- 一體式結構，減少了連接誤差精度，內部用螺紋結構，就不會出現夾頭脫落現象
- 用于鑽頭、鉸刀等夾持，不可用于絲錐和銑刀夾持
- 一體刀柄縮短刀具長度，提高加工精度，增加使用壽命
- 有自鎖功能，附帶專用扳手，請勿用其它工具

**Features:**

- The shank and keyless drill chuck are combined together so as to avoid the drill chuck slipping out for heavy-duty and high speed cutting and improve the precision.
- Not be used for gripping draw bolt and milling tools, instead of drill bit and reamer.
- APU drill chuck shorten the length while length the working life of tool.
- Each APU drill chuck attached 1pc APU wrench.


**NT40 - APU - 13 - 110**




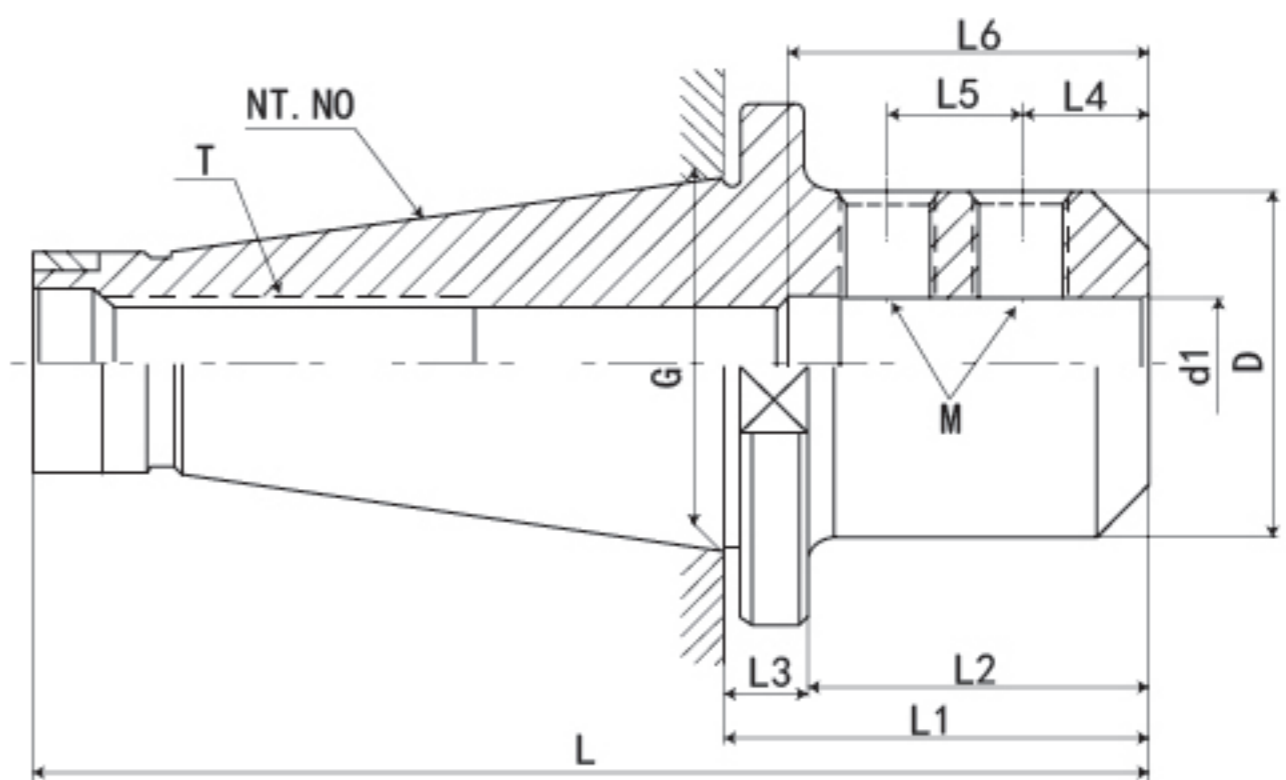
## NT-SLN 側固式刀柄

## NT-SLN SIDE LOCK END MILL HOLDER

數控刀柄  
CNC TOOLS



P.003



規格 / 型號 Model	L	L1	L2	L3	L4	L5	L6	D	d1	G	T	M	重量 KGS
NT30-SLN6-40	108.4	40	29	11	18	-	50	25	6	31.75	M12*1.75P	M5*0.8P	0.5
NT30-SLN8-40	108.4	40	29	11	18	-	50	28	8	31.75	M12*1.75P	M6*1.0P	0.6
NT30-SLN10-40	108.4	40	29	11	20	-	55	35	10	31.75	M12*1.75P	M8*1.25	0.6
NT30-SLN12-40	108.4	40	29	11	22.5	-	60	42	12	31.75	M12*1.75P	M10*1.5P	0.65
NT30-SLN16-50	118.4	50	39	11	24	-	100	45	16	31.75	M12*1.75P	M12*1.75P	0.75
NT30-SLN16-80	148.4	80	69	11	24	18	100	45	16	31.75	M12*1.75P	M12*1.75P	0.8
NT30-SLN20-63	131.4	63	52	11	25	-	100	50	20	31.75	M12*1.75P	M12*1.75P	1.1
NT30-SLN20-80	148.4	80	69	11	25	20	100	50	20	31.75	M12*1.75P	M12*1.75P	1.2
NT30-SLN25-80	148.4	80	69	11	24	25	110	65	25	31.75	M12*1.75P	M12*1.75P	1.25
規格 / 型號 Model	L	L1	L2	L3	L4	L5	L6	D	d1	G	T	M	重量 KGS
NT40-SLN6-50	143.4	50	39	11	18	-	50	25	6	44.45	M16*2.0P	M5*0.8P	0.9
NT40-SLN8-50	143.4	50	39	11	18	-	50	28	8	44.45	M16*2.0P	M6*1.0P	0.95
NT40-SLN10-50	143.4	50	39	11	20	-	55	35	10	44.45	M16*2.0P	M8*1.25	1.1
NT40-SLN12-50	143.4	50	39	11	22.5	-	60	42	12	44.45	M16*2.0P	M10*1.5P	1.12
NT40-SLN16-63	156.4	63	52	11	24	-	100	45	16	44.45	M16*2.0P	M12*1.75P	1.4
NT40-SLN16-80	173.4	80	69	11	24	18	100	45	16	44.45	M16*2.0P	M12*1.75P	1.9
NT40-SLN20-63	156.4	63	52	11	25	-	100	50	20	44.45	M16*2.0P	M12*1.75P	1.45
NT40-SLN20-80	173.4	80	69	11	25	20	100	50	20	44.45	M16*2.0P	M12*1.75P	2
NT40-SLN25-80	173.4	80	69	11	24	25	110	65	25	44.45	M16*2.0P	M12*1.75P	2.1
NT40-SLN32-80	173.4	80	69	11	24	28	120	70	32	44.45	M16*2.0P	M16*2.0P	2.5
NT40-SLN40-100	193.4	100	89	11	30	32	120	80	40	44.45	M16*2.0P	M16*2.0P	2.8
規格 / 型號 Model	L	L1	L2	L3	L4	L5	L6	D	d1	G	T	M	重量 KGS
NT50-SLN6-63	189.8	63	48	15	18	-	50	25	6	69.85	M24*3.0P	M5*0.8P	2.9
NT50-SLN8-63	189.8	63	48	15	18	-	50	28	8	69.85	M24*3.0P	M6*1.0P	3
NT50-SLN10-63	189.8	63	48	15	20	-	55	35	10	69.85	M24*3.0P	M8*1.25	3.2
NT50-SLN12-63	189.8	63	48	15	22.5	-	60	42	12	69.85	M24*3.0P	M10*1.5P	3.3
NT50-SLN16-63	189.8	63	48	15	24	-	100	45	16	69.85	M24*3.0P	M12*1.75P	3.5
NT50-SLN16-90	216.8	90	75	15	24	18	100	45	16	69.85	M24*3.0P	M12*1.75P	3.8
NT50-SLN20-63	189.8	63	48	15	25	-	100	50	20	69.85	M24*3.0P	M12*1.75P	3.6
NT50-SLN20-90	216.8	90	75	15	25	20	100	50	20	69.85	M24*3.0P	M12*1.75P	3.8
NT50-SLN25-80	206.8	80	65	15	24	25	110	65	25	69.85	M24*3.0P	M12*1.75P	4.2
NT50-SLN25-90	216.8	90	75	15	24	25	110	65	25	69.85	M24*3.0P	M12*1.75P	4.3
NT50-SLN32-80	206.8	80	65	15	24	28	120	70	32	69.85	M24*3.0P	M16*2.0P	4.4
NT50-SLN32-90	216.8	90	75	15	24	28	120	70	32	69.85	M24*3.0P	M16*2.0P	4.5
NT50-SLN40-100	226.8	100	85	15	30	32	120	80	40	69.85	M24*3.0P	M20*2.0P	4.6
NT50-SLN42-100	226.8	100	85	15	30	32	120	82	42	69.85	M24*3.0P	M20*2.0P	4.6
NT50-SLN50-120	246.8	120	105	15	35	35	120	90	50	69.85	M24*3.0P	M20*2.0P	4.8
NT50-SLN50.8-120	246.8	120	105	15	35	35	120	90	50.8	69.85	M24*3.0P	M20*2.0P	4.8

### 特點:

注:

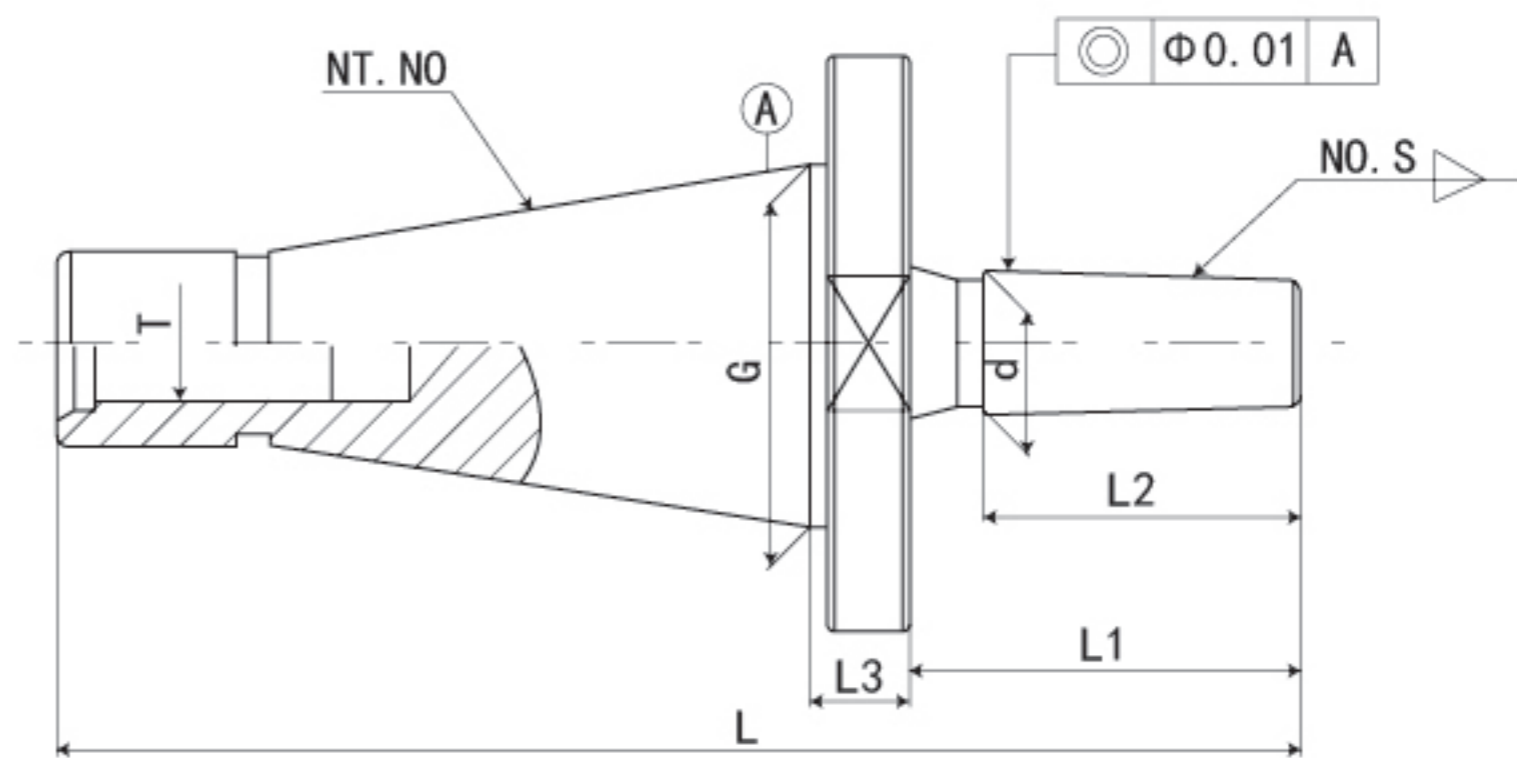
- 本體錐柄規格: GB3837/DIN2080
- 孔徑公差 H5
- 不分孔徑都為兩個螺釘固定
- 剛性夾持, 用于重切削
- 側固式刀柄被用作刀具的工具刀柄
- 裝入刀具時, 刀具的槽口平面部分與刀柄的側固螺釘對齊, 強力鎖定

### Features:

- Spindle conicity standard: GB3837/DIN2080
- Aperture tolerance:H5
- End Mill are held by one or two set screws.
- Used for remachining with rigidly grip.
- Face mill chuck used to be the holder of cutting tools.
- When attaching, cutting tools,with strong side aligned lock between the plane of the part and notch solid screws.

# NT-7:24 鑽接杆

## NT-7:24 DRILL CHUCK ARBORS



P.131

P.158

規格 / 型號 Model	L	L1	L2	L3	d	G	T	NO.S	重量 KGS
NT30-B10	104	24.6	20	11	10.94	31.75	M12*1.75P	B10	0.325
NT30-B12	108	28.6	25	11	12.065	31.75	M12*1.75P	B12	0.33
NT30-B16	116	36.6	32	11	15.733	31.75	M12*1.75P	B16	0.372
NT30-B18	124	44.6	40	11	17.78	31.75	M12*1.75P	B18	0.393
NT30-B22	133	53.6	48	11	21.793	31.75	M12*1.75P	B22	0.46
NT40-B10	132	27.6	20	11	10.94	44.45	M16*2.0P	B10	0.801
NT40-B12	136	31.6	25	11	12.065	44.45	M16*2.0P	B12	0.809
NT40-B16	143	38.6	32	11	15.733	44.45	M16*2.0P	B16	0.848
NT40-B18	151	46.6	40	11	17.78	44.45	M16*2.0P	B18	0.869
NT40-B22	160	55.6	48	11	21.793	44.45	M16*2.0P	B22	0.936
NT50-B10	170	28.2	20	15	10.94	69.85	M24*3.0P	B10	2.684
NT50-B12	174	32.2	25	15	12.065	69.85	M24*3.0P	B12	2.676
NT50-B16	182	40.2	32	15	15.733	69.85	M24*3.0P	B16	2.723
NT50-B18	195	53.2	40	15	17.78	69.85	M24*3.0P	B18	2.744
NT50-B22	200	58.2	48	15	21.793	69.85	M24*3.0P	B22	2.811
規格 / 型號 Model	L	L1	L2	L3	d	G	T	NO.S	重量 KGS
NT30-J0	99	19.6	14	11	6.35	31.75	M12*1.75P-1/2"-13UNC	J0	0.313
NT30-J1	106	37.6	20	11	9.754	31.75	M12*1.75P-1/2"-13UNC	J1	0.326
NT30-J2S	109	40.6	23	11	13.94	31.75	M12*1.75P-1/2"-13UNC	J2S	0.341
NT30-J2	113	44.6	25	11	14.199	31.75	M12*1.75P-1/2"-13UNC	J2	0.349
NT30-J33	122	53.6	28	11	15.85	31.75	M12*1.75P-1/2"-13UNC	J33	0.377
NT30-J6	122	53.6	28	11	17.17	31.75	M12*1.75P-1/2"-13UNC	J6	0.388
NT30-J3	123	54.6	34	11	20.599	31.75	M12*1.75P-1/2"-13UNC	J3	0.426
NT30-J4	136	67.6	45	11	28.55	31.75	M12*1.75P-1/2"-13UNC	J4	0.602
NT30-J5	145	76.6	50	11	35.89	31.75	M12*1.75P-1/2"-13UNC	J5	0.827
NT40-J0	126	32.6	14	11	6.35	44.45	M16*2.0P-5/8"-11UNC	J0	0.789
NT40-J1	133	39.6	20	11	9.754	44.45	M16*2.0P-5/8"-11UNC	J1	0.797
NT40-J2S	136	42.6	23	11	13.94	44.45	M16*2.0P-5/8"-11UNC	J2S	0.817
NT40-J2	141	47.6	25	11	14.199	44.45	M16*2.0P-5/8"-11UNC	J2	0.829
NT40-J33	145	51.6	28	11	15.85	44.45	M16*2.0P-5/8"-11UNC	J33	0.853
NT40-J6	145	51.6	28	11	17.17	44.45	M16*2.0P-5/8"-11UNC	J6	0.864
NT40-J3	150	56.6	34	11	20.599	44.45	M16*2.0P-5/8"-11UNC	J3	0.902
NT40-J4	165	71.6	45	11	28.55	44.45	M16*2.0P-5/8"-11UNC	J4	1.028
NT40-J5	170	76.6	50	11	35.89	44.45	M16*2.0P-5/8"-11UNC	J5	1.303
NT50-J1	175	48.2	20	15	9.754	69.85	M24*3.0P-1"-8UNC	J1	2.672
NT50-J2S	177	50.2	23	15	13.94	69.85	M24*3.0P-1"-8UNC	J2S	2.692
NT50-J2	180	53.2	25	15	14.199	69.85	M24*3.0P-1"-8UNC	J2	2.704
NT50-J33	184	57.2	28	15	15.85	69.85	M24*3.0P-1"-8UNC	J33	2.728
NT50-J6	184	57.2	28	15	17.17	69.85	M24*3.0P-1"-8UNC	J6	2.739
NT50-J3	191	64.2	34	15	20.599	69.85	M24*3.0P-1"-8UNC	J3	2.777
NT50-J4	202	75.2	45	15	28.55	69.85	M24*3.0P-1"-8UNC	J4	2.953
NT50-J5	208	81.2	50	15	35.89	69.85	M24*3.0P-1"-8UNC	J5	3.178