

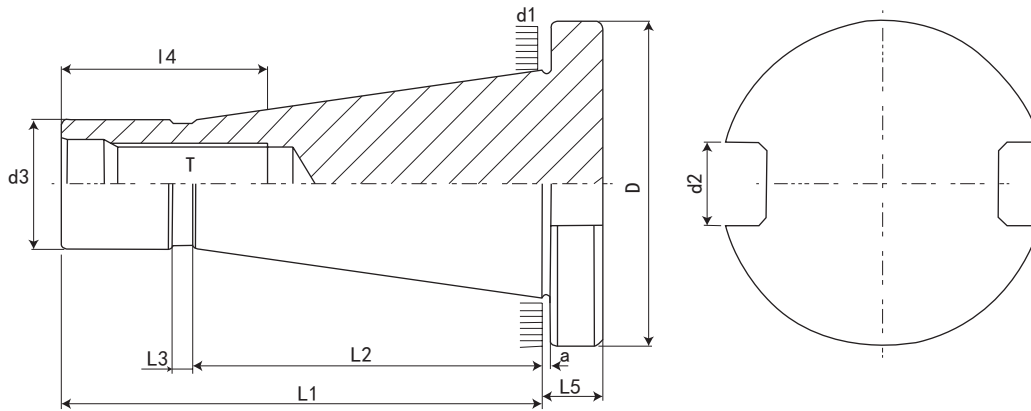
# NT

DIN 2080

PRECISION TOOL HOLDERS SYSTEM



## NT数控刀柄系列 CNC TOOL SYSTEMS



规格 / 型号 Model	D 0 -0.4	d1	d2 H12	d3 Max.	a ±0.2	L1	L2	L3	L4 Min	L5 ±0.15	T 6H
NT30	49	31.75	16.1	17.04	1.6	68.4	48.4	3	24	8	1/2"W12 M12*1.75P 1/2"13UNC
NT40	63	44.45	16.1	24.92	1.6	93.4	65.4	5	32	10	5/8"W11 M16*2.0P
NT50	97.5	69.85	25.7	39.19	3.2	126.8	101.8	8	47	12	1"W8 M24*3.0P

特点:

- ◎ 锥度精度: <AT3
- ◎ 基本材质: JIS-SCM415
- ◎ 硬度: HRC56° 渗碳深度 >0.8mm
- ◎ 真圆度: <0.8um
- ◎ 表面粗糙度: Ra<0.5um
- ◎ 本体规范: DIN 2080

Features:

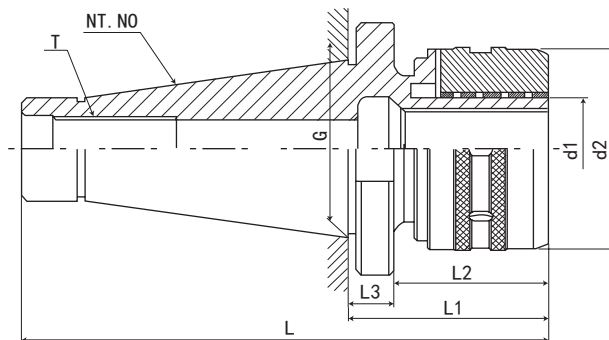
- ◎ Taper tolerance<AT3
- ◎ Basic Material:JIS-SCM415
- ◎ Hardness>HRC 56° Carbon depth>0.8mm
- ◎ Roundness<0.8um
- ◎ Surface roughness :Ra<0.5um
- ◎ Shank body standard : DIN2080



# 数控刀柄系列 CNC TOOL SYSTEMS

## NT-C 型高精度强力刀柄

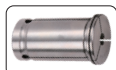
## NT-C FORCE MILLING CHUCK



数控刀柄  
CNC TOOLS



P.131



P.116

规格 / 型号 Model	L	L1	L2	L3	d1	d2	T	G	重量 KGS	夹持范围 Range
NT30-C20-80	148.4	80	69	11	20	56	M12*1.75P	31.75	2.0	3 4 5 6 8 10 12 14 16
NT30-C22-80	148.4	80	69	11	22	56	M12*1.75P	31.75	2.1	3 4 5 6 8 10 12 14 16
NT30-C25-80	148.4	80	69	11	25	61	M12*1.75P	31.75	2.3	3 4 5 6 8 10 12 14 16 18 20
NT30-C32-90	158.4	90	79	11	32	68	M12*1.75P	31.75	2.5	3 4 5 6 8 10 12 14 16 18 20 22 24 25
规格 / 型号 Model	L	L1	L2	L3	d1	d2	T	G	重量 KGS	夹持范围 Range
NT40-C20-105	198.4	105	94	11	20	56	M16*2.0P	44.45	2.5	3 4 5 6 8 10 12 14 16
NT40-C22-105	198.4	105	94	11	22	56	M16*2.0P	44.45	2.6	3 4 5 6 8 10 12 14 16
NT40-C25-105	198.4	105	94	11	25	61	M16*2.0P	44.45	2.7	3 4 5 6 8 10 12 14 16 18 20
NT40-C32-105	198.4	105	94	11	32	68	M16*2.0P	44.45	2.8	3 4 5 6 8 10 12 14 16 18 20 22 24 25
规格 / 型号 Model	L	L1	L2	L3	d1	d2	T	G	重量 KGS	夹持范围 Range
NT50-C25-105	231.8	105	90	15	25	61	M24*3.0P	69.85	5.2	3 4 5 6 8 10 12 14 16 18 20
NT50-C32-110	236.8	110	95	15	32	68	M24*3.0P	69.85	5.4	3 4 5 6 8 10 12 14 16 18 20 22 24 25
NT50-C42-120	246.8	120	105	15	42	78	M24*3.0P	69.85	6.2	3 4 5 6 8 10 12 14 16 18 20 22 24 25 28 30 32 34 36

### 特点:

高速、高精度、高寿命直柄刀具系列

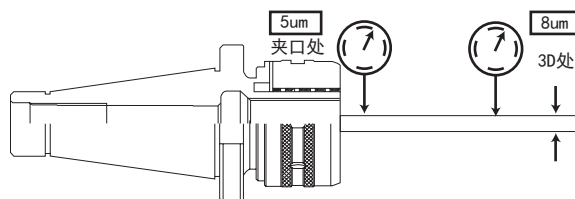
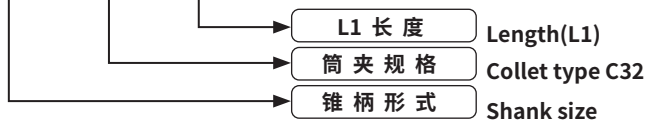
- ◎材质: 20CrMnTi/15CrMn
- ◎硬度: HRC58-60, 渗碳深度 > 0.8mm
- ◎锥柄公差等级: ≤ AT3
- ◎刀柄内孔分割了六槽, 以防止刀具转动, 增大夹持力
- ◎采用特殊材料制作滚针轴承保持架, 延长使用寿命, 增强夹紧力
- ◎具有夹持力大, 定点精度高, 特别适用于强力切削
- ◎可提供两种外观: 光饰或涂层处理
- ◎内孔多次研磨, 可达 Ra0.4, 起到镜面效果
- ◎外圆及端面多次研磨, 可达 Ra0.4, 起到镜面效果
- ◎表面“环保”特殊涂层处理, 提高表面硬度、耐磨性, 提高清洁度, 精度更稳定, 表面更光滑, 防锈、防腐蚀效果更好, 手感更舒适, 外观更美观
- ◎扳手、筒夹须另行购买

### Features:

High speed, high accuracy, high durability C-STRAIGHT TOOL SERIES

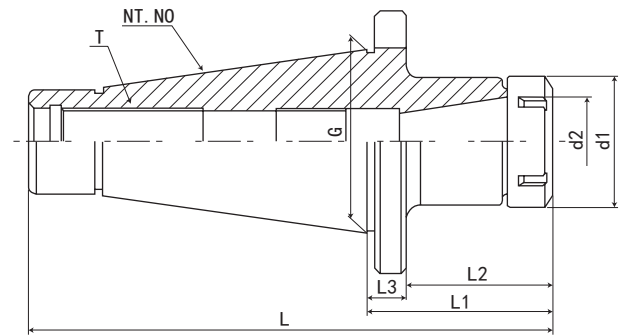
- ◎ Material: 20CrMnTi/15CrMn;
- ◎ Hardness: HRC58-60, Carbon depth > 0.8
- ◎ Tolerance class: ≤ AT3
- ◎ Inner hole of the shank divide into 6 troughs to prevent the insert remove, increase the grasp force
- ◎ Ball bearing cage is made of special material, improve the endurance, enhance the grasp force
- ◎ Grasp force strong, centering accuracy high, suit to heavy cutting
- ◎ Two kinds looks provide: polishing or chemical nickel-plating processing;
- ◎ Inner hole grinding for many times, so as to reach Ra0.4, has a mirror effect;
- ◎ End and the cylindrical are grinding for many times, can reach Ra0.4, has a mirror effect;
- ◎ Surface "environmental protection", special coating surface treatment, improve the hardness and endurance of the surface, cleanliness better, accuracy stable, surface more smooth, antirust, feel comfortable, appearance nice.
- ◎ The spanner, chuck must purchase alone.

NT40 - C32 - 105



# NT-ER 弹性筒夹刀柄

## NT-ER COLLET CHUCK



P.131



P.106



P.133

规格 / 型号 Model	L	L1	L2	L3	d1	d2	G	T	夹持范围 Range
NT30-ER16-45	113.4	45	34	11	28	16	31.75	M12*1.75P	1-10mm
NT30-ER20-45	113.4	45	34	11	34	20	31.75	M12*1.75P	1-13mm
NT30-ER25-55	123.4	55	44	11	42	25	31.75	M12*1.75P	1-16mm
NT30-ER32-60	128.4	60	49	11	50	32	31.75	M12*1.75P	2-20mm
NT30-ER40-70	138.4	70	59	11	63	40	31.75	M12*1.75P	2-26mm
规格 / 型号 Model	L	L1	L2	L3	d1	d2	G	T	夹持范围 Range
NT40-ER16-45	138.4	45	34	11	28	16	44.45	M16*2.0P	1-10mm
NT40-ER20-45	138.4	45	34	11	34	20	44.45	M16*2.0P	1-13mm
NT40-ER25-55	148.4	55	44	11	42	25	44.45	M16*2.0P	1-16mm
NT40-ER32-60	153.4	60	49	11	50	32	44.45	M16*2.0P	2-20mm
NT40-ER40-70	163.4	70	59	11	63	40	44.45	M16*2.0P	2-26mm
NT40-ER50-80	173.4	80	69	11	78	50	44.45	M16*2.0P	6-34mm
规格 / 型号 Model	L	L1	L2	L3	d1	d2	G	T	夹持范围 Range
NT50-ER11-100	226.8	100	85	15	19	11	69.85	M24*3.0P	1-7mm
NT50-ER16-100	226.8	100	85	15	28	16	69.85	M24*3.0P	1-10mm
NT50-ER20-100	226.8	100	85	15	34	20	69.85	M24*3.0P	1-13mm
NT50-ER25-100	226.8	100	85	15	42	25	69.85	M24*3.0P	1-16mm
NT50-ER32-75	201.8	75	60	15	50	32	69.85	M24*3.0P	2-20mm
NT50-ER32-100	226.8	100	85	15	50	32	69.85	M24*3.0P	2-20mm
NT50-ER40-80	206.8	80	65	15	63	40	69.85	M24*3.0P	2-26mm
NT50-ER40-100	226.8	100	85	15	63	40	69.85	M24*3.0P	2-26mm
NT50-ER50-80	206.8	80	65	15	78	50	69.85	M24*3.0P	6-34mm
NT50-ER50-100	226.8	100	85	15	78	50	69.85	M24*3.0P	6-34mm

### 特点:

注:

- ◎ 本体锥柄规格: GB3837/DIN2080
- ◎ 配用 ER 弹性筒夹, 可适用于夹持铣刀、钻头、丝锥
- ◎ 装置时筒夹必需先置入螺母, 再装入刀具, 接着锁固入本体
- ◎ 适用专用扳手, 不可用其它工具, 可能造成刀体损坏
- ◎ 扳手、筒夹须另行购买

### Features:

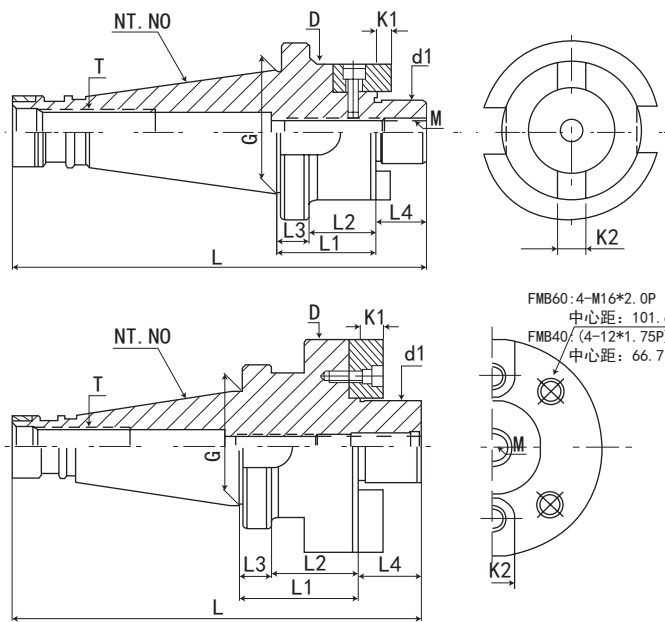
- ◎ Spindle conicity standard:GB3837/DIN2080
- ◎ ER collet chuck set with ER collet with flexibility used for gripping cutting tool, drill bit, draw bolt and so on.
- ◎ When using, nut should be clamped tensed firstly with cutting tools then locked into the main body.
- ◎ Always use the recommended wrench or spanner, unless, there might cause damage of cutting tools.
- ◎ The spanner, chuck must purchase alone.

CNC TOOLS  
数控刀柄

# 数控刀柄系列 CNC TOOL SYSTEMS

## NT-FMB 平面铣刀柄

## NT-FMB FACE MILL ARBOR



P.L02

规格 / 型号 Model	L	L1	L2	L3	L4	D	d1	K1	K2	G	T	M	重量 KGS
NT30-FMB22-35	121.4	35	24	11	18	48	22	4.8	10	31.75	M12*1.75P	M10*1.5P	0.67
NT30-FMB27-35	123.4	35	24	11	20	58	27	5.8	12	31.75	M12*1.75P	M12*1.75P	1.0
NT30-FMB32-35	125.4	35	24	11	22	70	32	6.8	14	31.75	M12*1.75P	M16*2.0P	1.2
NT30-FMB40-35	128.4	35	24	11	25	80	40	8.3	16	31.75	M12*1.75P	M16*2.0P	1.4
规格 / 型号 Model	L	L1	L2	L3	L4	D	d1	K1	K2	G	T	M	重量 KGS
NT40-FMB22-45	156.4	45	34	11	18	48	22	4.8	10	44.45	M16*2.0P	M10*1.5P	1.4
NT40-FMB27-45	158.4	45	34	11	20	58	27	5.8	12	44.45	M16*2.0P	M12*1.75P	1.6
NT40-FMB32-45	160.4	45	34	11	22	70	32	6.8	14	44.45	M16*2.0P	M16*2.0P	1.85
NT40-FMB40-45	163.4	45	34	11	25	80	40	8.3	16	44.45	M16*2.0P	M16*2.0P	2.7
规格 / 型号 Model	L	L1	L2	L3	L4	D	d1	K1	K2	G	T	M	重量 KGS
NT50-FMB22-45	189.8	45	30	15	18	48	22	4.8	10	69.85	M24*3.0P	M10*1.5P	3.5
NT50-FMB22-60	204.8	60	45	15	18	48	22	4.8	10	69.85	M24*3.0P	M10*1.5P	3.6
NT50-FMB22-100	244.8	100	85	15	18	48	22	4.8	10	69.85	M24*3.0P	M10*1.5P	4.0
NT50-FMB27-45	191.8	45	30	15	20	58	27	5.8	12	69.85	M24*3.0P	M12*1.75P	3.9
NT50-FMB27-60	206.8	60	45	15	20	58	27	5.8	12	69.85	M24*3.0P	M12*1.75P	4.0
NT50-FMB27-100	246.8	100	85	15	20	58	27	5.8	12	69.85	M24*3.0P	M12*1.75P	4.1
NT50-FMB32-45	193.8	45	30	15	22	70	32	6.8	14	69.85	M24*3.0P	M16*2.0P	4.0
NT50-FMB32-60	208.8	60	45	15	22	70	32	6.8	14	69.85	M24*3.0P	M16*2.0P	4.2
NT50-FMB32-100	248.8	100	85	15	22	70	32	6.8	14	69.85	M24*3.0P	M16*2.0P	4.5
NT50-FMB40-45	196.8	45	30	15	25	80	40	8.3	16	69.85	M24*3.0P	M16*2.0P	4.83
NT50-FMB40-60	211.8	60	45	15	25	80	40	8.3	16	69.85	M24*3.0P	M16*2.0P	5.2
NT50-FMB40-100	251.8	100	85	15	25	80	40	8.3	16	69.85	M24*3.0P	M16*2.0P	5.5
NT50-FMB60-60	211.8	60	45	15	25	128.75	60	12.5	25.4	69.85	M24*3.0P	M16*2.0P	8.5

### 特点:

注:

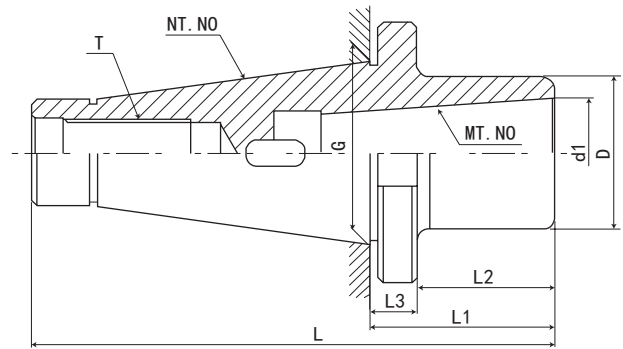
- ◎ 本体锥柄规格: GB3837/DIN2080
- ◎ 中心通孔有利于出水及抗震性强
- ◎ 平面铣刀配合部位 (d) 轴系公轴 h6
- ◎ 适用于平面铣削加工
- ◎ 可定制非常规长度

### Features:

- ◎ Spindle conicity standard: GB3837/DIN2080
- ◎ With water through design that reduces vibration and steady for cutting.
- ◎ Connecting part(d) designed for metric size.
- ◎ Tool holders with BT shank for face mill chuck, Face mill holders equipped with screws and drive keys to assemble the mill cutter to holder.
- ◎ Can be made upon requested dimensions.

# NT-MTA 带扁尾莫氏刀柄

## NT-MTA TAPER ADAPTER (MORSE)



规格 / 型号 Model	L	L1	L2	L3	D	d1	G	夹持钻头范围	T
NT30-MTA1-50	118.4	50	39	11	25	12.065	31.75	φ2-φ14	M12*1.75P
NT30-MTA2-50	118.4	50	39	11	32	17.780	31.75	φ14-φ23	M12*1.75P
NT30-MTA3-70	138.4	70	59	11	40	23.825	31.75	φ23-φ32	M12*1.75P
规格 / 型号 Model	L	L1	L2	L3	D	d1	G	夹持钻头范围	T
NT40-MTA1-50	143.4	50	39	11	25	12.065	44.45	φ2-φ14	M16*2.0P
NT40-MTA2-50	143.4	50	39	11	32	17.780	44.45	φ14-φ23	M16*2.0P
NT40-MTA3-65	158.4	65	54	11	40	23.825	44.45	φ23-φ32	M16*2.0P
NT40-MTA4-90	183.4	90	79	11	48	31.267	44.45	φ32-φ50	M16*2.0P
规格 / 型号 Model	L	L1	L2	L3	D	d1	G	夹持钻头范围	T
NT50-MTA1-45	171.8	45	30	15	25	12.065	69.85	φ2-φ14	M24*3.0P
NT50-MTA2-55	181.8	55	40	15	32	17.780	69.85	φ14-φ23	M24*3.0P
NT50-MTA3-65	191.8	65	50	15	40	23.825	69.85	φ23-φ32	M24*3.0P
NT50-MTA4-70	196.8	70	55	15	48	31.267	69.85	φ32-φ50	M24*3.0P
NT50-MTA5-105	231.8	105	90	15	70	44.399	69.85	φ50-φ75	M24*3.0P
NT50-MTA6-170	296.8	170	155	15	85	63.348	69.85	φ75-φ100	M24*3.0P
NT50-MTA6-270	396.8	270	255	15	85	63.348	69.85	φ75-φ100	M24*3.0P

### 特点:

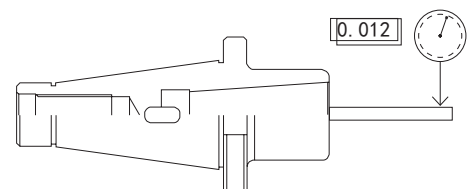
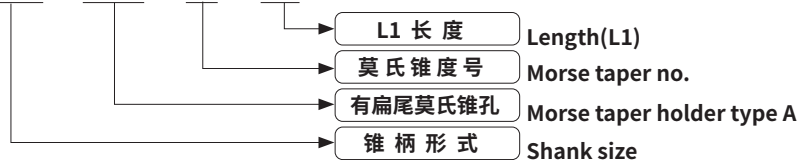
注:

- ◎ 本体锥柄规格: GB3837/DIN2080
- ◎ 刀柄用于莫氏锥柄刀具、钻头、铰刀等
- ◎ 钻头莫氏柄和刀具直径

### Features:

- ◎ Spindle conicity standard: GB3837/DIN2080
- ◎ Used in Morse conicity tools, drill chuck, reamer and so on.
- ◎ Dimensions

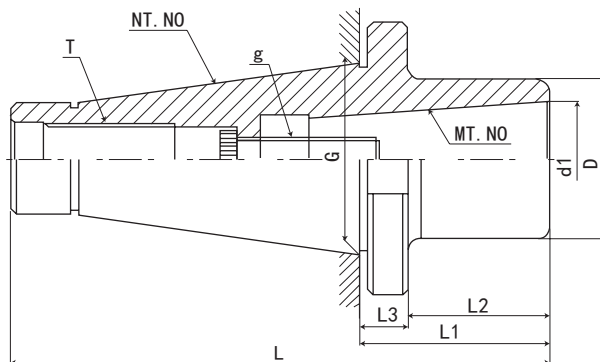
NT40 - MTA - 2 - 50



# 数控刀柄系列 CNC TOOL SYSTEMS

## NT-MTB 无扁尾莫氏刀柄

## NT-MTB MORSE TAPER HOLDER



CNC TOOLS  
数控刀柄

规格 / 型号 Model	L	L1	L2	L3	D	d1	G	g	夹持铣刀范围	T
NT30-MTB1-50	118.4	50	39	11	25	12.065	31.75	M6	φ10-φ14	M12*1.75P
NT30-MTB2-50	118.4	50	39	11	32	17.780	31.75	M10	φ16-φ22	M12*1.75P
NT30-MTB3-70	138.4	70	59	11	40	23.825	31.75	M12	φ24-φ32	M12*1.75P
规格 / 型号 Model	L	L1	L2	L3	D	d1	G	g	夹持铣刀范围	T
NT40-MTB1-50	143.4	50	39	11	25	12.065	44.45	M6	φ10-φ14	M16*2.0P
NT40-MTB2-50	143.4	50	39	11	32	17.780	44.45	M10	φ16-φ22	M16*2.0P
NT40-MTB3-65	158.4	65	54	11	40	23.825	44.45	M12	φ24-φ32	M16*2.0P
NT40-MTB4-90	183.4	90	79	11	48	31.267	44.45	M16	φ32-φ50	M16*2.0P
规格 / 型号 Model	L	L1	L2	L3	D	d1	G	g	夹持铣刀范围	T
NT50-MTB1-45	171.8	45	30	15	25	12.065	69.85	M6	φ10-φ14	M24*3.0P
NT50-MTB2-55	181.8	55	40	15	32	17.780	69.85	M10	φ16-φ22	M24*3.0P
NT50-MTB3-65	191.8	65	50	15	40	23.825	69.85	M12	φ24-φ32	M24*3.0P
NT50-MTB4-70	196.8	70	55	15	48	31.267	69.85	M16	φ32-φ50	M24*3.0P
NT50-MTB5-105	231.8	105	90	15	70	44.399	69.85	M20	φ40-φ75	M24*3.0P
NT50-MTB6-170	296.8	170	155	15	85	63.348	69.85	M24	φ75-φ100	M24*3.0P
NT50-MTB6-270	396.8	270	255	15	85	63.348	69.85	M24	φ75-φ100	M24*3.0P

### 特点:

注:

◎本体锥柄规格: GB3837/DIN2080

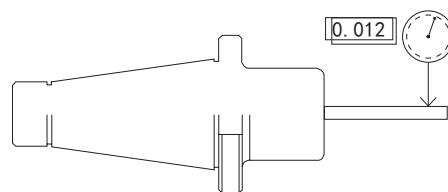
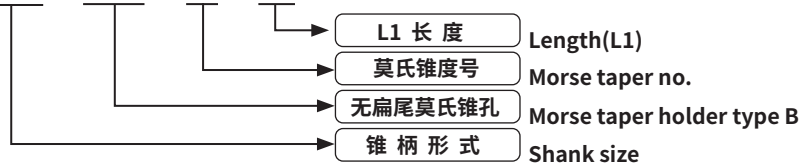
◎刀柄用于莫氏锥柄铣刀

### Features:

◎ Spindle conicity standard: GB3837/DIN2080

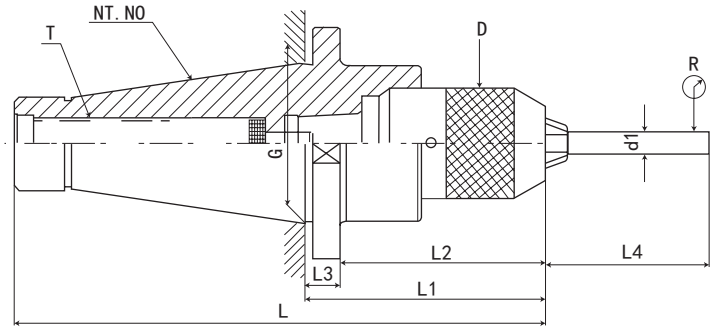
◎ Dimensions

NT40 - MTB - 2 - 50



# NT-APU 一体式钻夹头刀柄

## NT-APU DRILL CHUCK HOLDER



P.131



P.158

规格 / 型号 Model	L	L1	L2	L3	L4	R	D	d1	G	T	夹持范围 Range
NT30-APU08-80	148.4	80	69	11	55	0.08	37	8	31.75	M12*1.75P	0-8mm
NT30-APU13-100	168.4	100	89	11	75	0.08	50	13	31.75	M12*1.75P	1-13mm
NT30-APU16-110	178.4	110	99	11	80	0.08	57	16	31.75	M12*1.75P	1-16mm
NT40-APU08-80	173.4	80	69	11	55	0.08	37	8	44.45	M16*2.0P	0-8mm
NT40-APU13-100	193.4	100	89	11	75	0.08	50	13	44.45	M16*2.0P	1-13mm
NT40-APU16-110	203.4	110	99	11	80	0.08	57	16	44.45	M16*2.0P	1-16mm
NT50-APU13-110	236.8	110	95	15	75	0.08	50	13	69.85	M24*3.0P	1-13mm
NT50-APU16-120	246.8	120	105	15	80	0.08	57	16	69.85	M24*3.0P	1-16mm

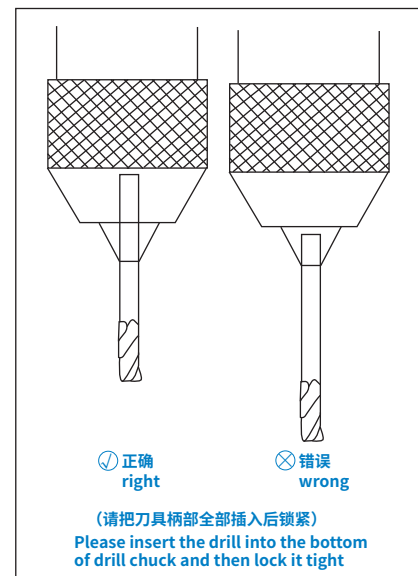
### 特点:

注:

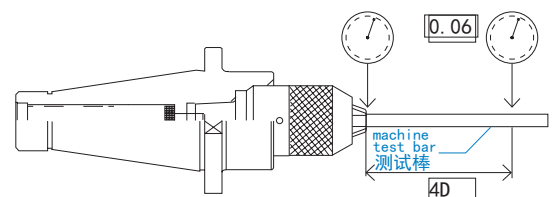
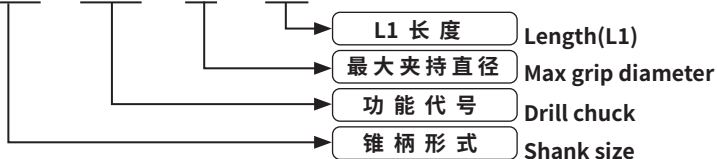
- ◎ 一体式结构，减少了连接误差精度，内部用螺纹结构，就不会出现夹头脱落现象
- ◎ 用于钻头、铰刀等夹持，不可用于丝锥和铣刀夹持
- ◎ 一体刀柄缩短刀具长度，提高加工精度，增加使用寿命
- ◎ 有自锁功能，附带专用扳手，请勿用其它工具

### Features:

- ◎ The shank and keyless drill chuck are combined together so as to avoid the drill chuck slipping out for heavy-duty and high speed cutting and improve the precision.
- ◎ Not be used for gripping draw bolt and milling tools, instead of drill bit and reamer.
- ◎ APU drill chuck shorten the length while length the working life of tool.
- ◎ Each APU drill chuck attached 1pc APU wrench.



NT40 - APU - 13 - 110

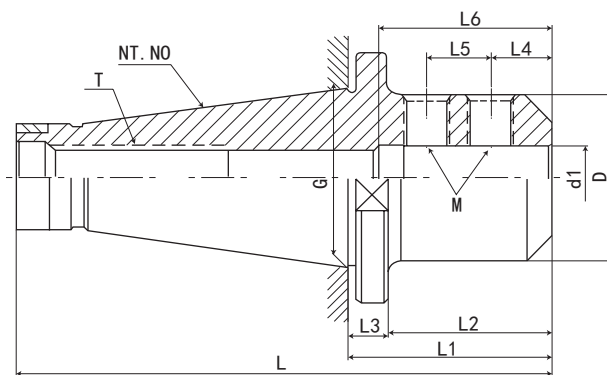


数控刀柄  
CNC TOOLS

# 数控刀柄系列 CNC TOOL SYSTEMS

## NT-SLN 侧固式刀柄

## NT-SLN SIDE LOCK END MILL HOLDER



P.003

规格 / 型号 Model	L	L1	L2	L3	L4	L5	L6	D	d1	G	T	M	重量 KGS
NT30-SLN6-40	108.4	40	29	11	18	-	50	25	6	31.75	M12*1.75P	M5*0.8P	0.5
NT30-SLN8-40	108.4	40	29	11	18	-	50	28	8	31.75	M12*1.75P	M6*1.0P	0.6
NT30-SLN10-40	108.4	40	29	11	20	-	55	35	10	31.75	M12*1.75P	M8*1.25	0.6
NT30-SLN12-40	108.4	40	29	11	22.5	-	60	42	12	31.75	M12*1.75P	M10*1.5P	0.65
NT30-SLN16-50	118.4	50	39	11	24	-	100	45	16	31.75	M12*1.75P	M12*1.75P	0.75
NT30-SLN16-80	148.4	80	69	11	24	18	100	45	16	31.75	M12*1.75P	M12*1.75P	0.8
NT30-SLN20-63	131.4	63	52	11	25	-	100	50	20	31.75	M12*1.75P	M12*1.75P	1.1
NT30-SLN20-80	148.4	80	69	11	25	20	100	50	20	31.75	M12*1.75P	M12*1.75P	1.2
NT30-SLN25-80	148.4	80	69	11	24	25	110	65	25	31.75	M12*1.75P	M12*1.75P	1.25
规格 / 型号 Model	L	L1	L2	L3	L4	L5	L6	D	d1	G	T	M	重量 KGS
NT40-SLN6-50	143.4	50	39	11	18	-	50	25	6	44.45	M16*2.0P	M5*0.8P	0.9
NT40-SLN8-50	143.4	50	39	11	18	-	50	28	8	44.45	M16*2.0P	M6*1.0P	0.95
NT40-SLN10-50	143.4	50	39	11	20	-	55	35	10	44.45	M16*2.0P	M8*1.25	1.1
NT40-SLN12-50	143.4	50	39	11	22.5	-	60	42	12	44.45	M16*2.0P	M10*1.5P	1.12
NT40-SLN16-63	156.4	63	52	11	24	-	100	45	16	44.45	M16*2.0P	M12*1.75P	1.4
NT40-SLN16-80	173.4	80	69	11	24	18	100	45	16	44.45	M16*2.0P	M12*1.75P	1.9
NT40-SLN20-63	156.4	63	52	11	25	-	100	50	20	44.45	M16*2.0P	M12*1.75P	1.45
NT40-SLN20-80	173.4	80	69	11	25	20	100	50	20	44.45	M16*2.0P	M12*1.75P	2
NT40-SLN25-80	173.4	80	69	11	24	25	110	65	25	44.45	M16*2.0P	M12*1.75P	2.1
NT40-SLN32-80	173.4	80	69	11	24	28	120	70	32	44.45	M16*2.0P	M16*2.0P	2.5
NT40-SLN40-100	193.4	100	89	11	30	32	120	80	40	44.45	M16*2.0P	M16*2.0P	2.8
规格 / 型号 Model	L	L1	L2	L3	L4	L5	L6	D	d1	G	T	M	重量 KGS
NT50-SLN6-63	189.8	63	48	15	18	-	50	25	6	69.85	M24*3.0P	M5*0.8P	2.9
NT50-SLN8-63	189.8	63	48	15	18	-	50	28	8	69.85	M24*3.0P	M6*1.0P	3
NT50-SLN10-63	189.8	63	48	15	20	-	55	35	10	69.85	M24*3.0P	M8*1.25	3.2
NT50-SLN12-63	189.8	63	48	15	22.5	-	60	42	12	69.85	M24*3.0P	M10*1.5P	3.3
NT50-SLN16-63	189.8	63	48	15	24	-	100	45	16	69.85	M24*3.0P	M12*1.75P	3.5
NT50-SLN16-90	216.8	90	75	15	24	18	100	45	16	69.85	M24*3.0P	M12*1.75P	3.8
NT50-SLN20-63	189.8	63	48	15	25	-	100	50	20	69.85	M24*3.0P	M12*1.75P	3.6
NT50-SLN20-90	216.8	90	75	15	25	20	100	50	20	69.85	M24*3.0P	M12*1.75P	3.8
NT50-SLN25-80	206.8	80	65	15	24	25	110	65	25	69.85	M24*3.0P	M12*1.75P	4.2
NT50-SLN25-90	216.8	90	75	15	24	25	110	65	25	69.85	M24*3.0P	M12*1.75P	4.3
NT50-SLN32-80	206.8	80	65	15	24	28	120	70	32	69.85	M24*3.0P	M16*2.0P	4.4
NT50-SLN32-90	216.8	90	75	15	24	28	120	70	32	69.85	M24*3.0P	M16*2.0P	4.5
NT50-SLN40-100	226.8	100	85	15	30	32	120	80	40	69.85	M24*3.0P	M20*2.0P	4.6
NT50-SLN42-100	226.8	100	85	15	30	32	120	82	42	69.85	M24*3.0P	M20*2.0P	4.6
NT50-SLN50-120	246.8	120	105	15	35	35	120	90	50	69.85	M24*3.0P	M20*2.0P	4.8
NT50-SLN50.8-120	246.8	120	105	15	35	35	120	90	50.8	69.85	M24*3.0P	M20*2.0P	4.8

### 特点:

注:

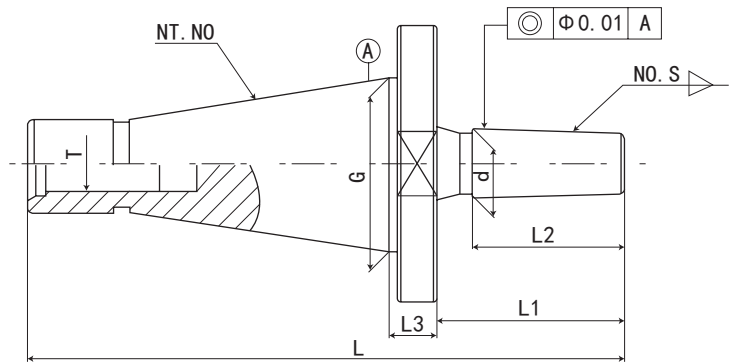
- ◎ 本体锥柄规格: GB3837/DIN2080
- ◎ 孔径公差 H5
- ◎ 不分孔径都为两个螺钉固定
- ◎ 刚性夹持, 用于重切削
- ◎ 侧固式刀柄被用作刀具的工具刀柄
- ◎ 装入刀具时, 刀具的槽口平面部分与刀柄的侧固螺钉对齐, 强力锁定

### Features:

- ◎ Spindle conicity standard: GB3837/DIN2080
- ◎ Aperture tolerance:H5
- ◎ End Mill are held by one or two set screws.
- ◎ Used for remachining with rigidly grip.
- ◎ Face mill chuck used to be the holder of cutting tools.
- ◎ When attaching, cutting tools,with strong side aligned lock between the plane of the part and notch solid screws.

# NT-7:24 钻接杆

## NT-7:24 DRILL CHUCK ARBORS



P.131

P.158

规格 / 型号 Model	L	L1	L2	L3	d	G	T	NO.S	重量 KGS
NT30-B10	104	24.6	20	11	10.94	31.75	M12*1.75P	B10	0.325
NT30-B12	108	28.6	25	11	12.065	31.75	M12*1.75P	B12	0.33
NT30-B16	116	36.6	32	11	15.733	31.75	M12*1.75P	B16	0.372
NT30-B18	124	44.6	40	11	17.78	31.75	M12*1.75P	B18	0.393
NT30-B22	133	53.6	48	11	21.793	31.75	M12*1.75P	B22	0.46
NT40-B10	132	27.6	20	11	10.94	44.45	M16*2.0P	B10	0.801
NT40-B12	136	31.6	25	11	12.065	44.45	M16*2.0P	B12	0.809
NT40-B16	143	38.6	32	11	15.733	44.45	M16*2.0P	B16	0.848
NT40-B18	151	46.6	40	11	17.78	44.45	M16*2.0P	B18	0.869
NT40-B22	160	55.6	48	11	21.793	44.45	M16*2.0P	B22	0.936
NT50-B10	170	28.2	20	15	10.94	69.85	M24*3.0P	B10	2.684
NT50-B12	174	32.2	25	15	12.065	69.85	M24*3.0P	B12	2.676
NT50-B16	182	40.2	32	15	15.733	69.85	M24*3.0P	B16	2.723
NT50-B18	195	53.2	40	15	17.78	69.85	M24*3.0P	B18	2.744
NT50-B22	200	58.2	48	15	21.793	69.85	M24*3.0P	B22	2.811
规格 / 型号 Model	L	L1	L2	L3	d	G	T	NO.S	重量 KGS
NT30-J0	99	19.6	14	11	6.35	31.75	M12*1.75P-1/2"-13UNC	J0	0.313
NT30-J1	106	37.6	20	11	9.754	31.75	M12*1.75P-1/2"-13UNC	J1	0.326
NT30-J2S	109	40.6	23	11	13.94	31.75	M12*1.75P-1/2"-13UNC	J2S	0.341
NT30-J2	113	44.6	25	11	14.199	31.75	M12*1.75P-1/2"-13UNC	J2	0.349
NT30-J33	122	53.6	28	11	15.85	31.75	M12*1.75P-1/2"-13UNC	J33	0.377
NT30-J6	122	53.6	28	11	17.17	31.75	M12*1.75P-1/2"-13UNC	J6	0.388
NT30-J3	123	54.6	34	11	20.599	31.75	M12*1.75P-1/2"-13UNC	J3	0.426
NT30-J4	136	67.6	45	11	28.55	31.75	M12*1.75P-1/2"-13UNC	J4	0.602
NT30-J5	145	76.6	50	11	35.89	31.75	M12*1.75P-1/2"-13UNC	J5	0.827
NT40-J0	126	32.6	14	11	6.35	44.45	M16*2.0P-5/8"-11UNC	J0	0.789
NT40-J1	133	39.6	20	11	9.754	44.45	M16*2.0P-5/8"-11UNC	J1	0.797
NT40-J2S	136	42.6	23	11	13.94	44.45	M16*2.0P-5/8"-11UNC	J2S	0.817
NT40-J2	141	47.6	25	11	14.199	44.45	M16*2.0P-5/8"-11UNC	J2	0.829
NT40-J33	145	51.6	28	11	15.85	44.45	M16*2.0P-5/8"-11UNC	J33	0.853
NT40-J6	145	51.6	28	11	17.17	44.45	M16*2.0P-5/8"-11UNC	J6	0.864
NT40-J3	150	56.6	34	11	20.599	44.45	M16*2.0P-5/8"-11UNC	J3	0.902
NT40-J4	165	71.6	45	11	28.55	44.45	M16*2.0P-5/8"-11UNC	J4	1.028
NT40-J5	170	76.6	50	11	35.89	44.45	M16*2.0P-5/8"-11UNC	J5	1.303
NT50-J1	175	48.2	20	15	9.754	69.85	M24*3.0P-1"-8UNC	J1	2.672
NT50-J2S	177	50.2	23	15	13.94	69.85	M24*3.0P-1"-8UNC	J2S	2.692
NT50-J2	180	53.2	25	15	14.199	69.85	M24*3.0P-1"-8UNC	J2	2.704
NT50-J33	184	57.2	28	15	15.85	69.85	M24*3.0P-1"-8UNC	J33	2.728
NT50-J6	184	57.2	28	15	17.17	69.85	M24*3.0P-1"-8UNC	J6	2.739
NT50-J3	191	64.2	34	15	20.599	69.85	M24*3.0P-1"-8UNC	J3	2.777
NT50-J4	202	75.2	45	15	28.55	69.85	M24*3.0P-1"-8UNC	J4	2.953
NT50-J5	208	81.2	50	15	35.89	69.85	M24*3.0P-1"-8UNC	J5	3.178

CNC TOOLS  
数控刀柄