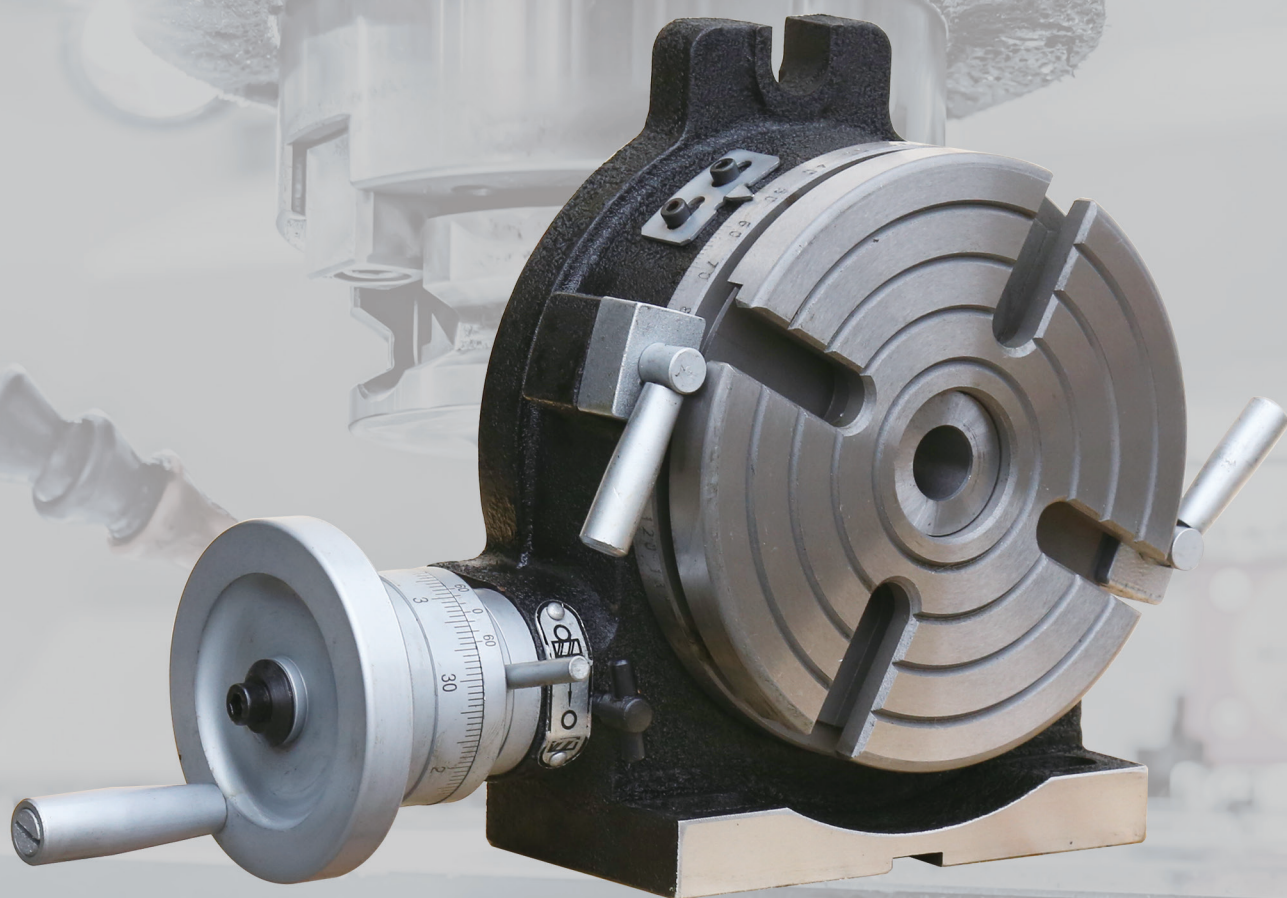


分度头系列

NC DIVIDING HEAD SERIES

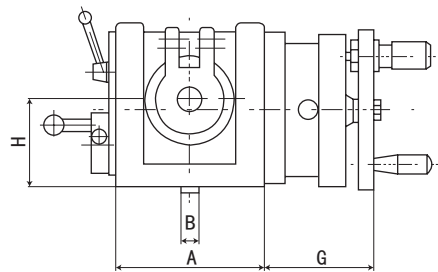
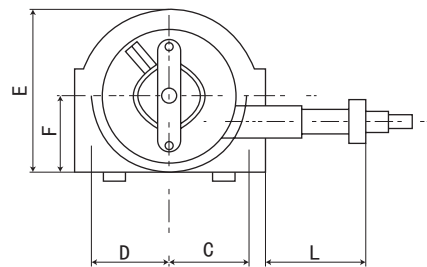


数控分度头系列
NC DIVIDING HEAD SERIES

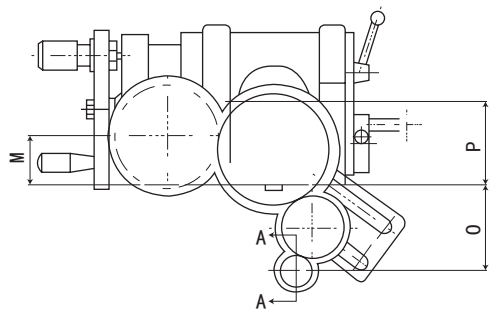
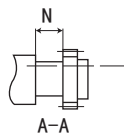
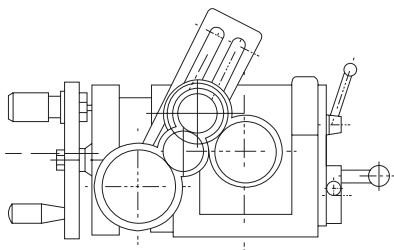
分度头系列 INDEX FIXTURE SERIES

F11 系列万能分度头

F11 SERIES UNIVERSAL DIVIDING HEAD



F11 系列万能分度头安装尺寸图 DIMENSIONAL SKETCH



工作台系列
WORKTABLE SERIES

特点:

- ◎ F11100A, F11125A, F11160A, F11200A 型万能分度头是铣床上的主要附件之一，利用分度刻度环和游标，定位销和分度盘以及交换齿轮，能将装卡在顶尖间或卡盘上的工件分成任意角度，可将圆分成任意等份，辅助机床利用各种不同形状的刀具进行各种沟槽、正齿轮、螺旋正齿轮、阿基米德螺线凸轮等的加工工件。
- ◎ 该产品还备有圆工作台，将它安装在分度头主轴上，工件可直接紧固在工作台上，也可利用装在工作台上的夹具紧固，可完成工件多方位加工。
- ◎ F11125C, F11160C 型万能分度头，是根据用户要求特殊订货的产品。本产品是在 F11125A, F11160A 型万能分度头的基础上进行了改进，能随较大负荷。
- ◎ F11100AL, F11125AL, F11160AL 型万能分度头，分度手把为左置。

Features:

- ◎ The universal dividing head, Type F11100A, F11125, F11160A, F11200A is one of the most important attachment for milling machine. With the help of this dividing head the workpiece held between centers, or on a chuck can be rotate to any angle as desired and the periphery of a workpiece can be divided into any divisions of equal parts. By means of all kinds of cutters, the dividing head can also help milling machine to perform the milling operation for flute spur gear, spiral gear, spiral flute, Archimedean cam, helical flute and etc.
- ◎ The dividing head is equipped with a face plate that can be mounted onto the spindle nose. The workpiece can be mounted on the face plate, thus, cutting can be carried out on 4-sides of a workpiece.
- ◎ F11125C F11160C is designed for the customers special needed, the shafting is improved to support heavy load.
- ◎ The universal dividing head, type F11100AL, F11125AL, F11160AL is the same as of the structures and the operation handle is setted on the left.

F11 系列万能分度头

F11 SERIES UNIVERSAL DIVIDING HEAD

主要规格和参数: Main technical parameter:

规格 Specifications		F11100A	F11125A	F11160A	F11200A
项目 Items					
中心高 Center height mm		100	125	160	200
主轴由水平位置向上转动的角度 Swivel angle of spindle from horizontal to upward		≤ 95°			
主轴由水平位置向下转动的角度 Horizontal position(down ward)		≤ 5°			
分度手柄每转主轴回转角度 Rotating angle of spindle for one complete revolution of dividing handle		9° (540grad.,1' each			
游标最小示值 Min.reading of vernier		10"			
蜗杆副传动比 Worm gear ratio		1:40			
主轴孔锥度 (莫氏) Taper of spindle bore		MT3	MT4		
定位键宽度 Width of locating key.mm		14	18		
主轴法兰盘定位短锥直径 Diameter of short taper of spindl nose for mounting flange mm		φ41.275	φ53.975	φ53.975	φ53.975
分度盘孔数 Numbers of hole in dividing plate	第一面 1st plate	24,25,28,30,34,37,38,39,41,42,43			
	第二面 2nd plate	46,47,49,51,53,54,57,58,59,62,66			
变换齿轮 Change Gear	模数 Module	1.5	2		
	齿数 Teeth Numbers	25,30,35,40,50,55,60,70,80,90,100			
分度手柄一整转主轴单个分度误差 Individual indexing error of the spindle for one complete revolution of diving handle		±45"			
主轴在任意 1/4 圆周上的累积误差 Cumulate error at any 1/4 periphery of spindle		±1"			
最大承载 Max.bearing kg		100	130	130	130
净重 Net weight kg		67	101.5	113	130
毛重 Gross weight kg		79	111.5	123	140
箱体尺寸 Overall dimensions mm		616×465×265	635×530×530	710×535×342	710×535×342

F11 系列万能分度头安装尺寸参数: Installation sketch and dimensions

规格 / 型号 Model	A	B	C	D	E	F	G	H	L	M	N	O	P
F11100A	162	14	102	87	186	95	116	100	93	54.7	30	100	100
F11125A	209	18	116	98	224	117	120	125	103	68.5	34.5	100	125
F11160A	209	18	116	98	259	152	120	160	103	68.5	34.5	100	160
F11200A	209	18	116	98	299	192	120	200	103	68.5	34.5	100	200

注: 配带附件 Accessories

尾座 Tailstock 挂轮架 Change gear braket 交换齿轮 12 件 12×change gear 千斤顶 Jack

顶尖 Center 分度盘 Dividing plate 法兰盘 Flange 三爪卡盘 3-jaw chuck

圆工作台 (特殊订货) Round table(optional)

分度头系列 INDEX FIXTURE SERIES

F12 系列半万能分度头

F12 SERIES SEMI-UNIVERSAL-DIVIDING HEAD



主要规格和参数: Main technical parameter:

项 目 Items		规 格 Specifications			
		F12100	F12125	F12160	F12200
中心高 Center height mm		100	125	160	200
主轴由水平位置向上转动的角度 Swivel angle of spindle from horizontal to upward		≤ 95°			
主轴由水平位置向下转动的角度 Horizontal position(downward)		≤ 5°			
分度手轮每转主轴回转角度 Rotating angle of spindle for one complete revolution of dividing handle		9° (540grad.,1' each)			
游标最小示值 Min.reading of vernier		10"			
蜗杆副传动比 Worm gear ratio		1:40			
主轴孔锥度 (莫氏) Taper of spindle bore		MT3	MT4		
定位键宽度 Width of locating key.mm		14	18		
主轴法兰盘定位短锥直径 Diameter of short taper of spindl nose for mounting flange mm		φ41.275	φ53.975	φ53.975	φ53.975
分度盘孔数 Numbers of hole in dividing plate	第一面 1st plate	24,25,28,30,34,37,38,39,41,42,43			
	第二面 2nd plate	46,47,49,51,53,54,57,58,59,62,66			
分度手柄一整转主轴单个分度误差 Individual indexing error of the spindle for one complete revolution of diving handle		±45"			
主轴在任意 1/4 圆周上的累积误差 Cumulate error at any 1/4 periphery of spindle		±1"			
最大承载 Max.bearing kg		100	130	130	130
净重 Net weight kg		57	83.5	100	130
毛重 Gross weight kg		69	96	114	140
箱体尺寸 Overall dimensions mm		610×495×255	536×460×310	710×505×342	710×535×342

特点:

- ◎ F12 系列半万能分度头是铣床上的主要附件之一,可用于简单分度也可将圆周分成任意等份等的加工工作。
- ◎ F12 系列为右手把。

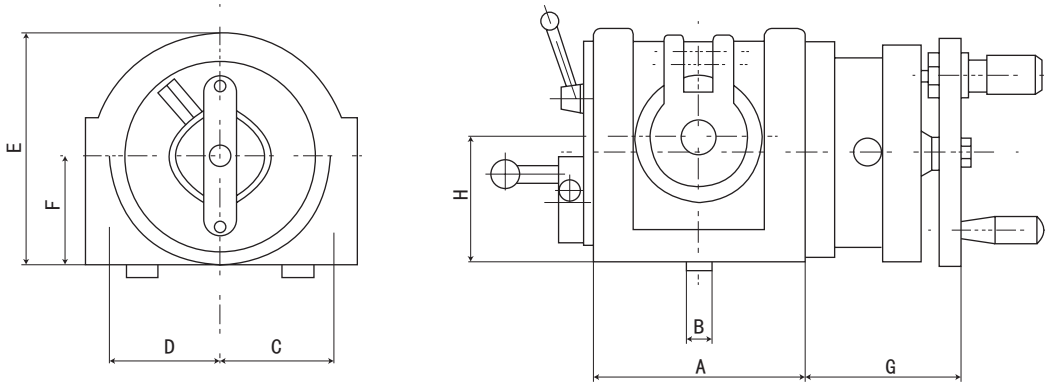
Features:

- ◎ Type F12 series semi-universal dividing head is one of the most important attachment for milling machine.It can be used for simple indexing and divide circle into any equal parts,etc.
- ◎ The F12 series with right handwheel.

F12 系列半万能分度头

F12 SERIES SEMI-UNIVERSAL-DIVIDING HEAD

F12 系列半万能分度头安装尺寸参数: Installation sketch and dimensions



F12 系列半万能分度头安装尺寸参数: Installation sketch and dimensions

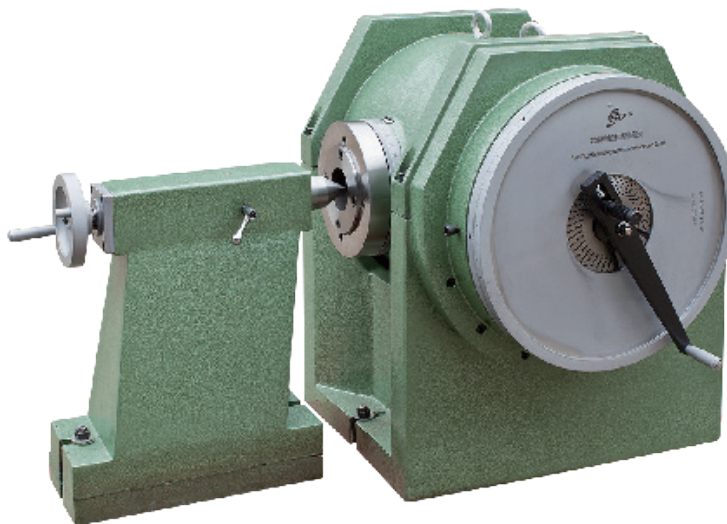
规格 / 型号 Model	A	B	C	D	E	F	G	H	L	M	N	O	P
F12100	162	14	102	87	186	95	116	100	93	54.7	30	100	100
F12125	209	18	116	98	224	117	120	125	103	68.5	34.5	100	125
F12160	209	18	116	98	259	152	120	160	103	68.5	34.5	100	160
F12200	209	18	116	98	299	192	120	200	103	68.5	34.5	100	200

注: 配带附件 Accessories

尾座 Tailstock 顶尖 Center 分度盘 Dividing plate 法兰盘 Flange 三爪卡盘 3-jaw chuck
 圆工作台 (特殊订货) Round table(optional)

重型 F12 型半万能分度头

HEAVY F12 SERIES SEMI-UNIVERSAL DIVIDING HEAD



特点:

- ◎ 重型 F12 系列半万能分度头是大型铣床上的主要附件之一, 可用于简单分度也可将圆周分成任意等份等的加工工作。
- ◎ F12 系列为右手把。

Features:

- ◎ Heavy F12 series semi-universal dividing head is one of the most important attachment for Big milling machine. It can be used for simple indexing and divide circle into any equal parts, etc.
- ◎ The F12 series with right handwheel.

分度头系列 INDEX FIXTURE SERIES

重型 F12 型半万能分度头

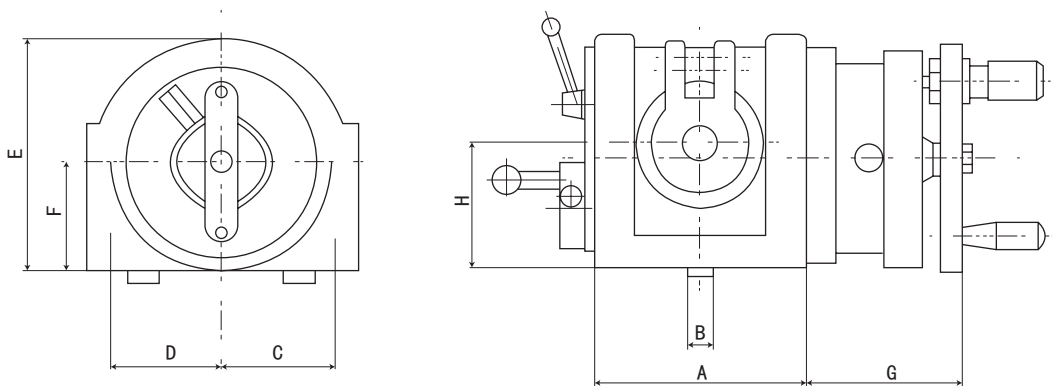
HEAVY F12 SERIES SEMI-UNIVERSAL DIVIDING HEAD

主要规格和参数: Main technical parameter:

规格 Specifications		F11260	F11300	F11400	F12500	F121000
项目 Items						
中心高 Center height mm		260	300	400	500	1000
主轴由水平位置向上转动的角度 Swivel angle of spindle from horizontal to upward		≤ 95°	≤ 95°	≤ 95°	≤ 95°	≤ 95°
主轴由水平位置向下转动的角度 Horizontal position(downward)		≤ 5°	≤ 5°	≤ 5°	≤ 5°	≤ 5°
分度手轮每转主轴回转角度 Rotating angle of spindle for one complete revolution of dividing handle		9°	9°	9°	9°	9°
游标最小示值 Min.reading of vernier		10''	10''	10''	10''	10''
蜗杆副传动比 Worm gear ratio		1:40	1:40	1:40	1:40	1:40
主轴孔锥度 (莫氏) Taper of spindle bore		MT6	MT6	MT6	MT5	MT5
定位键宽度 Width of locating key.mm		18/20	18/20	18/20	22	22
主轴法兰盘定位短锥直径 Diameter of short taper of spindl nose for mounting flange mm		φ82.563	φ82.563	φ82.563	φ106.375	φ212.375
分度盘孔数 Numbers of hole in dividing plate	第一面 1st plate	24,25,28,30,34,37,38,39,41,42,43				
	第二面 2nd plate	46,47,49,51,53,54,57,58,59,62,66				
分度手柄一整转主轴单个分度误差 Individual indexing error of the spindle for one complete revolution of diving handle		80''	80''	80''	500	1000
主轴在任意 1/4 圆周上的累积误差 Cumulate error at any 1/4 periphery of spindle		±70''	±70''	±70''		±1''
最大承载 Max.bearing kg		380	380	380	100	500

工作台系列
WORKTABLE SERIES

F12 系列半万能分度头安装尺寸图 DIMENSIONAL SKETCH



F12 系列半万能分度头安装尺寸参数: Installation sketch and dimensions

规格 / 型号 Mode	A	B	C	D	E	F	G	H
F12500	490	22	300	330	790	500	160	500

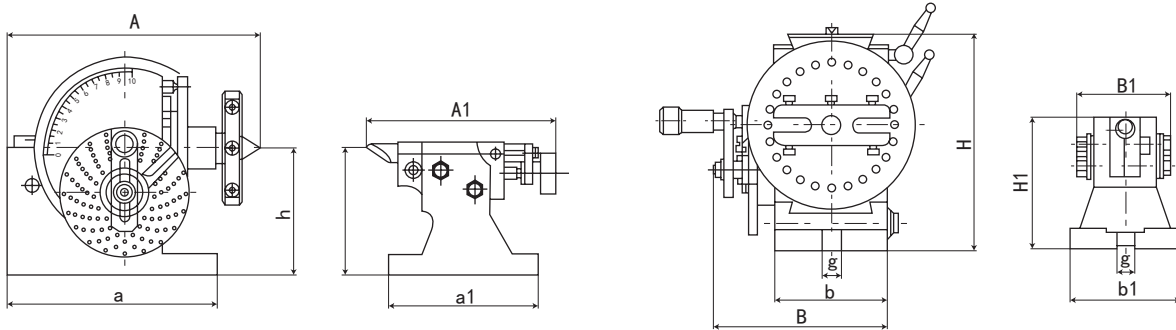
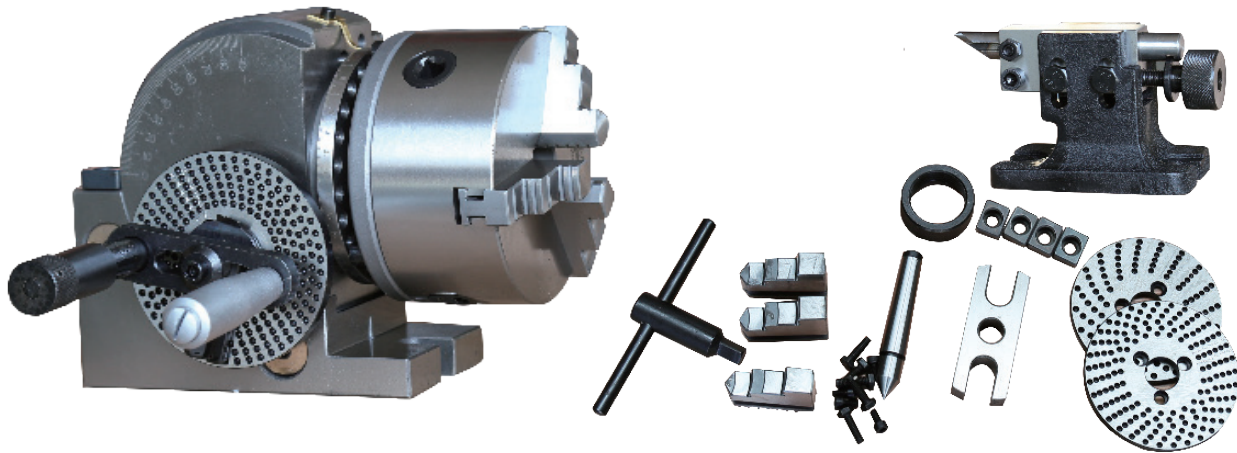
注: 配带附件 Accessories

尾座 Tailstock 分度盘 Dividing plate 法兰盘 Flange 三爪卡盘 3-jaw chuck

圆工作台 (特殊订货) Round table(optional)

BS 系列半万能分度头

BS SERIES SEMI-UNIVERSAL DIVIDING HEAD



SEMI-UNIVERSAL INDEX CENTER B & S TYPE NO.0, NO.1(HEAD-STOCK)

Unit:mm/in

规格 / 型号 Mode	A	B	H	h	a	b	g	Taper of Center	Diameter of Spindle hole	N.W.(kg)
BS-0	193	140	173	100	166	90	16	MT2	18	23.8
	7.59	5.51	6.81	3.93	6.53	3.54	0.63	B & S NO.7	18	23.8
BS-1	242	168	220	128	206	113	16	MT3	20	35.8
	9.52	6.61	8.66	5.04	8.11	4.45	0.63	B & S NO.9	20	35.8

SEMI-UNIVERSAL INDEX CENTER B & STYPE NO.0, NO.1(TAIL-STOCK)

STANDARD ACCESSORIES

Dividing plate A,B,C.
Numbers of holes of dividing plate
(worm gear reduction ratio 1:40)

Unit:mm

Numbers of hole	PlateA	15	16	17	18	19	20
	PlateB	21	23	27	29	31	33
	PlateC	37	39	41	43	47	49

规格 / 型号 Mode	A1	B1	H1	h	a1	b1	g1	N.W.(kg)	Mueasurement m3
BS-0	175	87	107	100	130	92	16	Packed with the Dividing Head	
	6.89	3.42	4.21	3.93	5.12	3.62	0.63		
BS-1	183	87	137	128	158	110	16	Packed with the Dividing Head	
	7.20	3.42	5.39	5.04	6.22	4.33	0.63		

特点:

◎分度头

半万能分度头是简易的分度中心，可直接、间接分度，完成面、槽、齿加工，不需配件。但整体结构与万能分度头相同，快速分度的24孔直接进行2, 3, 4, 6, 8, 12, 24等分分度，随机附3个分度板间接分度等分数2-50, 51-380。

Features:

◎ Semi-Universal Dividing Head is a simple Index Center and can be used for direct and indirect dividing. Complete the gear, face, flute processing and no need accessories, but the whole construction is the same as universal type. The 24 quick-dividing holes can complete 2, 3, 4, 6, 8, 12, 24 division indexing. Attaches 3 dividing plate along with the dividing head indirect dividing in any division indexing 2-50, 51-380.

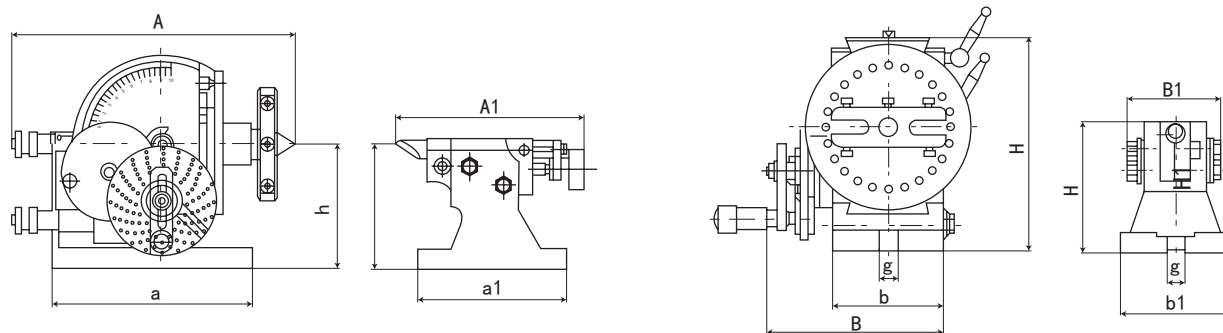
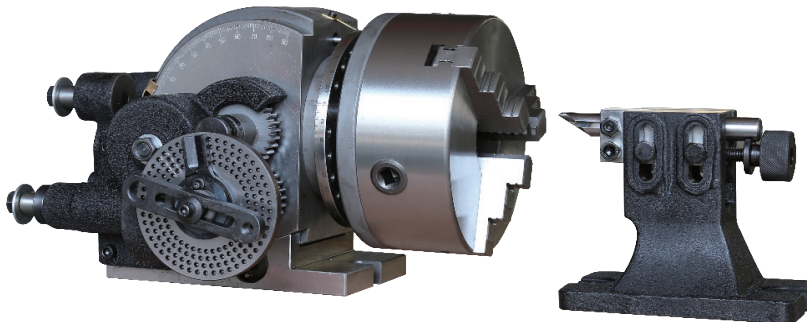
分度头系列 INDEX FIXTURE SERIES

BS 系列万能分度头

BS SERIES UNIVERSAL DIVIDING HEAD

OPTIONAL ACCESSORY

- 3-jaw Chuck
- 4" or 5" 3-jaw Chuck for BS-0
- 5" or 6" 3-jaw Chuck for BS-1
- 6" or 7" or 8" 3-jaw Chuck for BS-2



UNIVERSAL INDEX CENTER B & S NO.2(HEAD-STOCK)

规格 / 型号 Mode	A	B	H	h	a	b	g	Work hole taper	N.W.(kg)
BS-2	370	280	236	133	212	134	16	MT4	73
	14.57	11.02	9.29	5.24	8.35	5.28	0.63	B & S NO.10	73

UNIVERSAL INDEX CENTER B & S NO.2(TAIL-STOCK)

规格 / 型号 Mode	A1	B1	H1	h	a1	b1	g1	N.W.(kg)	Mueasurement m3
BS-2	183	87	156	133	175	122	16	Packed with the Dividing Head	
	7.2	3.42	6.14	5.24	6.89	4.80	0.63		

STANDARD ACCESSORIES

Dividing plate A,B,C.
Numbers of holes of dividing plate
(worm gear reduction ratio 1:40)

Numbers of hole	PlateA	15	16	17	18	19	20
	PlateB	21	23	27	29	31	33
	PlateC	37	39	41	43	47	49

特点:

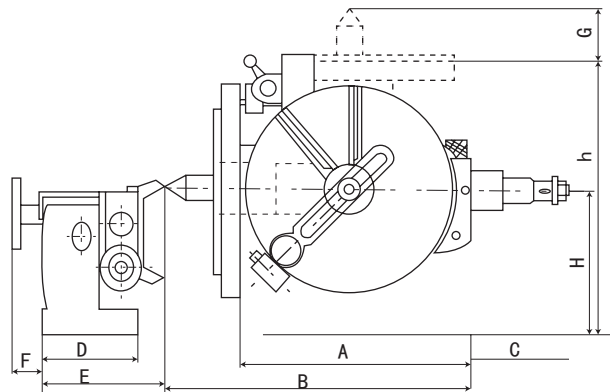
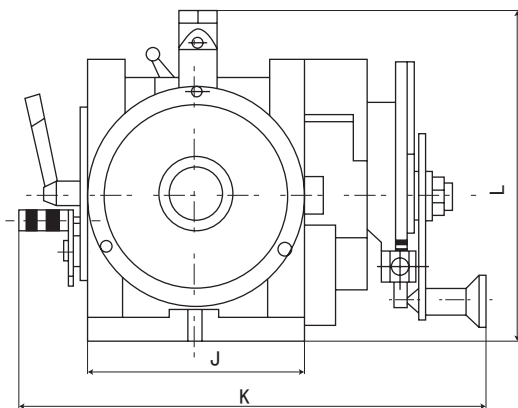
◎万能分度中心（分度头）
万能分度头为综合型辅助设备，分度精确，操作灵活及螺旋连作较以往加工倍速提高效率，中心面可在仰角 90°俯角 10°间任意调节，此中心适用于高标准的检验及测试，为保证客户满意蜗轮副设计为 1: 40

Features:

◎ The Universal dividing head(Index Center) has been designed to carry out all types of gear cutting.Precision dividing and spiral word with greater precision and efficiency than before. The center face can adjust from elevation 90 to depression 10, It suits for high standard inspection and test.In order to satisfied customers,the worm gear ratio is designed for 1:40.

BS-3 超精密万能分度头

BS-3 SUPERIOR UNIVERSAL DIVIDING HEAD



工作台系列
WORKTABLE SERIES

规格 / 型号 Mode	A		B		C		D		E		F		G	
BS-3	245	921/23	322	1211/16	152	6	166	617/32	198	725/32	50	115/16	52	21/16
规格 / 型号 Mode	H		h		J		K		L		重量 (kg)			
BS-3	143	55/8	278	1015/16	194	75/8	465	185/16	290	1113/32	132			

特点:

型号: BS-3

- ◎可作简易型分度,透过搭配齿轮或传动齿轮组,亦可作螺旋切削。
- ◎采 55mm (深度) 主轴中心孔径贯穿设计,适用于强力切削,稳定性更高。
- ◎可倾斜 0-90 度,采 MT6 锥度顶针。
- ◎主轴、蜗杆采用高级钢材制成,经热处理、精密研磨,具耐用性及精度,蜗轮采用钢材,以增加其延展性。

标准配件

◎尾座

最高中心距为: 165mm

最低中心距为: 38mm

◎蜂巢板 (蜗杆及蜗轮之减速比 40: 1)

A 面孔数: 24, 25, 28, 30,34,37,39,41,42,43

B 面孔数: 46, 47,49,51,53,54,57,58,59,62,66

◎ 12 片齿轮组: (24,28,32,38,40,44,48,56,64,72,86,100)

◎传动齿轮组

◎中心轴 / 轴轮架

Features:

- ◎ ◎ The BS-3 is designed and made according to characteristics and advantages to all kinds of dividing heads,suitable for general dividing,gear and rack spindle cutting,in many use.
- ◎ Designed for super hole 55.5mm of diameter,shaft hole. Slope of end hole is Morse' s taper No,6 and the BS-3 can be adjusted from being level or vertical(0° -90°)
- ◎ All the BS-3' s shaft,spindle center.worm and gear are made of super steels through grinding,heat treatment,to achieve rigid construction.
- ◎ Its tailstock designed in dovetail joint,very strong in structure which is available for heavy-duty load,also the degree can be adjusted in every direction.
- ◎ The ratio of worm and worm gear is 1:40.
- ◎ The Dividing plate is available in two sides,A and B.A Face 24,25,28,30,34,37,39,41,42,43, B Face 46,47,49,51,53,54,57, 58,59,62,66.
- ◎ The changable gears are 24,28,32,38,40,44,48,56,64,72,86 ,and 100.
- ◎ Standard accessories are:Center,Carrier,Gear Bracket,Gear Set.
- ◎ Center Height of Tail Stock

分度头系列 INDEX FIXTURE SERIES

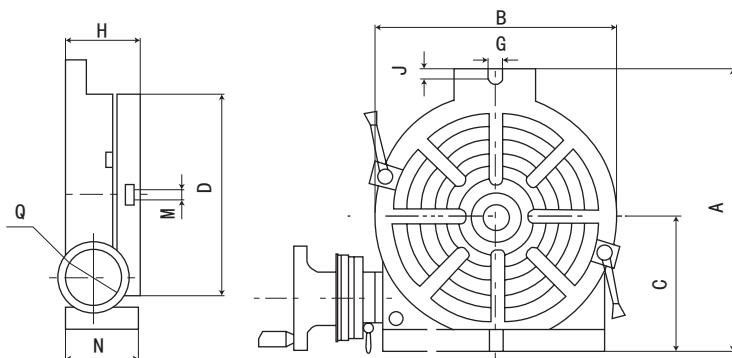
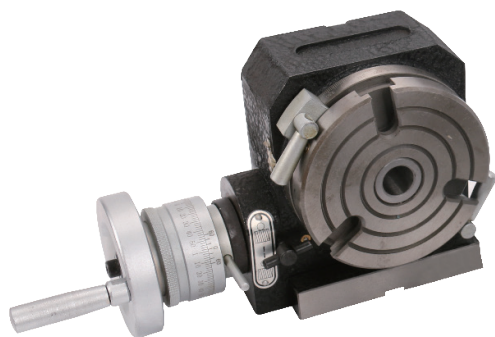
迷你型立卧两用分度盘

MINI SERIES ROTARY TABLE

主要规格和参数: Main technical parameter:

规格 Specifications	3"	4"	5"
项目 Items			
工作面直径 Table diameter mm	φ76.2	φ110	φ127
台面中心孔锥度 (莫氏) Morse taper of the center hole	MT2		
工作台垂直时中心高 Height of center for Verti.mounting mm	59	81.5	90
台面 T 型槽宽度 Width of the T-solt mm	8	12	12
台面 T 型槽相邻角度 Adjacent angle of table T-slot	90°	120°	120°
定位键宽度 Width of the locating key.mm	12	12	12
蜗杆副模数 Module of the worm gear	1	1	1
蜗杆副传动比 Transmission ratio of the worm gear	1:36	1:72	1:72
工作台圆周刻度 Graduation of the table	360°	360°	360°
蜗杆每转所代表的转台度数 Rotating angle of table with one revolution of the worm	10°	5°	5°
最大承载 (卧式) Max.bearing (with table Hor.) kg	100	150	200
最大承载 (立式) Max.bearing (with table Vert.) kg	50	75	100

工作台系列
WORKTABLE SERIES



规格 / 型号 Mode	HV-3"	HV-4"	HV-5"
A	98	145	155
B	78	114	127
C	59	85.5	90
D	φ76.2	φ110	φ127
E	12	12	12
G			
H	83	85	85
J			15
M	MT2	MT2	MT2
N	71	68	68

特点:

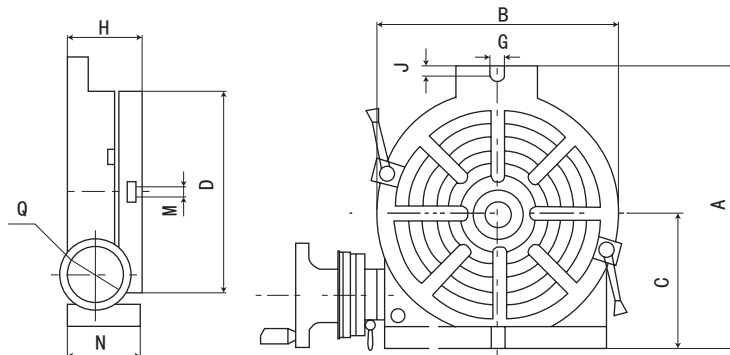
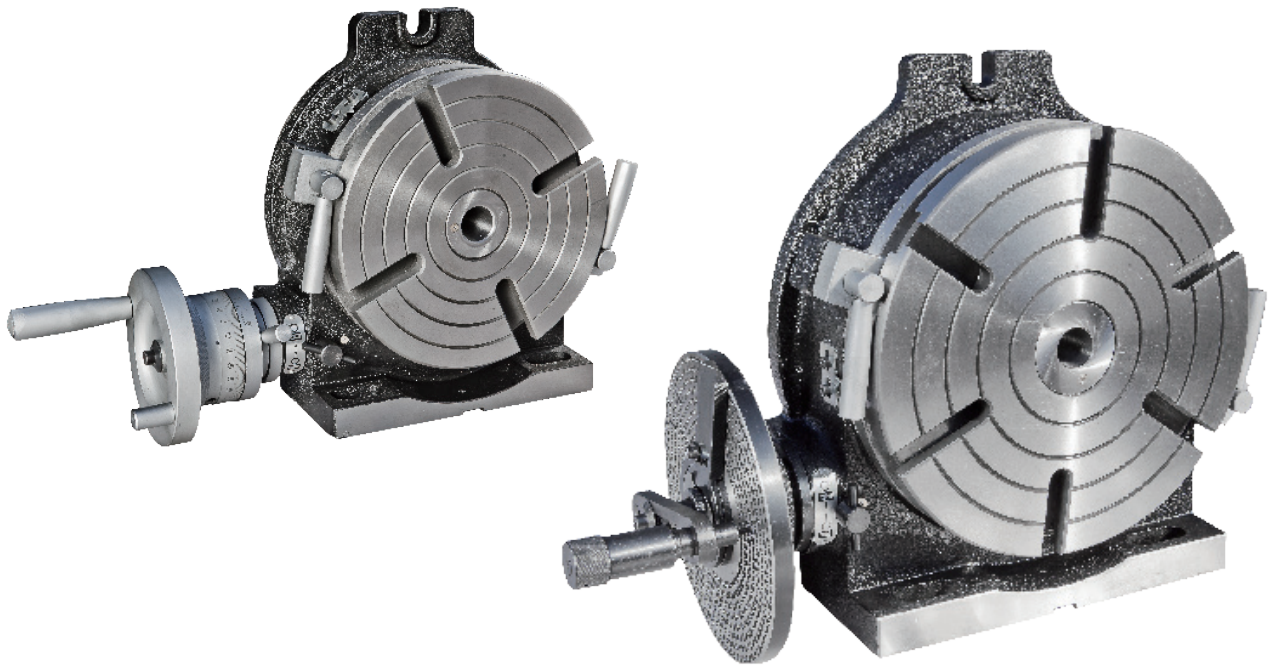
◎迷你型立卧两用分度盘是小型及家用铣床的主要附件之一, 可在铣床进行分度钻孔式铣削, 圆周切削, 镗孔镗平面等工作, 工作台垂直位置与尾座配合使用时还可对较复杂的工作进行圆周分度铣削和铣削。

Features:

◎ mini H/V rotary table is one of the main accessories of DIY and home use milling machines it is used for index boring,milling, circle cutting, spot facing and boring hole etc on milling machine. Rotary table in vertical with tailstock working together, it can be used on complex work for circle index boring and milling

TSL 型系列回转工作台

TSL SERIES ROTARY TABLE



TSL 系列回转工作台安装尺寸图 DIMENSIONAL SKETCH

特点:

◎ TSL 型立卧回转工作台是铣床的主要附件之一，可用在铣床上进行分度钻孔或铣削、圆周切削、镗孔铯平面等工作。工作台垂直位置与尾座配合使用时，还可对较复杂的工作进行圆周分度钻削和铣削。

◎根据用户特殊要求，可提供手轮左置转台 TSL 系列

Features:

◎ TSL vertical & horizontal rotary table is one of the main accessories of milling machines it is used for index boring,milling, circle cutting, spot facing and boring hole etc on milling machine. Rotary table in vertical with tailstock working together, it can be used on complex work for circle index boring and milling

◎ As clients' special requirements the TSL with left handwheel can be offered.

分度头系列 INDEX FIXTURE SERIES

TSL 型系列回转工作台

TSL SERIES ROTARY TABLE

主要规格和参数: Main technical parameter:

规格 Specifications	TSL150 (HV-6)	TSL200 (HV-8)	TSL250 (HV-10)	TSL300 (HV-12)	TSL350 (HV-14)	TSL400 (HV-16)
项目 Items						
工作面直径 Table diameter mm	φ150	φ200	φ250	φ300	φ350	φ400
台面中心孔锥度 (莫氏) Morse taper of the center hole	3#			4#	4#	4#
工作台垂直时中心高 Height of center for Verti.mounting mm	100	135	165	195	230	260
台面 T 型槽宽度 Width of the T-slot mm	12			14		
台面 T 型槽相邻角度 Adjacent angle of table T-slot	90°			60°		
定位键宽度 Width of the locating key.mm	16					18
蜗杆副模数 Module of the worm gear	1.5	2	2.5	3.5		
蜗杆副传动比 Transmission ratio of the worm gear	1: 90					
工作台圆周刻度 Graduation of the table	360°					
蜗杆每转所代表的转台度数 Rotating angle of table with one revolution of the worm	4° (1' per graduation)					
游标最小示值 Minimum value of vernier	10''					
分度精度 Indexing accuracy	80''			60''		
最大承载 (卧式) Max.bearing (with table Hor.) kg	100	150	200	250	300	350
最大承载 (立式) Max.bearing (with table Vert.) kg	50	75	100	125	150	175

TSL 系列回转工作台安装尺寸参数: Installation sketch and dimensions

规格 / 型号 Mode	TSL150(HV-6)	TSL200(HV-8)	TSL250(HV-10)	TSL300(HV-12)	TSL350(HV-14)	TSL400(HV-16)
A	200	265	325	388	450	525
B	160	220	280	330	390	450
C	100	135	165	195	230	260
D	φ150	φ200	φ250	φ300	φ350	φ400
E	16					18
G	17					
H	83	105	115	135	138	150
J	10	10	15			
M	MT2	MT3	MT4			
N	78	98	113	133	128	145
净重 Net weight kg	14	28	43	71	83	93
毛重 Gross weight kg	15	30	45	73	85	95
箱体尺寸 (mm) Case dimensions	27×24×13	38×30×16	45×35×18	55×45×19	55×48×19	55×50×20

TS...A 系列回转工作台

TS...A SERIES ROTARY TABLE



主要规格和参数: Main technical parameter:

规格 Specifications	TS160A	TS200A	TS250A	TS320A	TS400A	TS500A	TS630A	TS800A	TS1000A
项目 Items									
工作面直径 Table diameter mm	φ160	φ200	φ250	φ320	φ400	φ500	φ630	φ800	φ1000
台面中心孔锥度 (莫氏) Morse taper of the center hole	2#	3#	3#	4#	4#	5#	5#	6#	6#
台面 T 型槽宽度 Width of the T-slot mm	10	12	12	14	14	18	18	22	22
台面 T 型槽相邻角度 Adjacent angle of table T-slot	90°	90°	60°	60°	60°	45°	45°	45°	45°
定位键宽度 Width of the locating key.mm	12	14	14	18	18	-	-	-	-
工作台圆周刻度 Graduation of the table	360°	360°	360°	360°	360°	360°	360°	360°	360°
游标最小示值 Minimum value of vernier	10"	10"	10"	10"	10"	10"	10"	10"	10"
分度精度 Indexing accuracy	80"	60"	60"	60"	60"	60"	60"	60"	60"
工作台最大承载 Max.workload kg	100	150	200	250	300	550	700	1200	2000
净重 Net weight kg	16.5	22.5	33.5	65	125	215	345	800	1300
毛重 Gross weight kg	21.5	31	44.5	76	145	238	377	855	1400
箱体尺寸 Case dimensions	400×330 ×200	400×360 ×208	500×400 ×210	580×480 ×238	750×616 ×280	850×730 ×302	995×900 ×326	1175×1090 ×391	1430×1224 ×550

特点:

◎ TS...A 系列回转工作台 (平转台) 是铣床的主要附件之一, 可用在铣床上进行分度、钻孔或铣削、圆周切削、圆周曲面加工、平面及部分线段的直线加工等工作。

每个规格的转台分别提供连接不同的法兰盘, 作为特殊订货, 并将法兰盘独立包装。另外, 为特殊订货所提的分度盘附件可实现 2 至 66 间所有整数和由 67 到 132 间能被 2, 3 和 5 整除的所有整数的分度。

Features:

◎ TS...A series rotary table is one of the most important accessory of milling machine. It is widely used for index boring, milling, circle cutting, circle curve plane and segment etc operation.

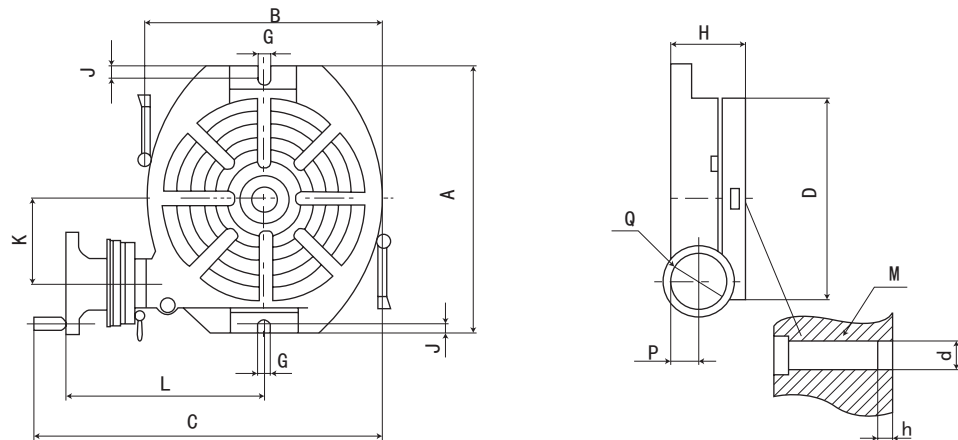
As a option, different table supply different flange, flange will be packed separately. otherwise, diving plates which provides from the option can indexing all of the integer between 2 and 66 also can indexing the numbers between 67 and 132 which can be divided exactly by number 2, 3 and 5.

分度头系列 INDEX FIXTURE SERIES

TS...A 系列回转工作台

TS...A SERIES ROTARY TABLE

TS...A 系列回转工作台安装尺寸图 DIMENSIONAL SKETCH

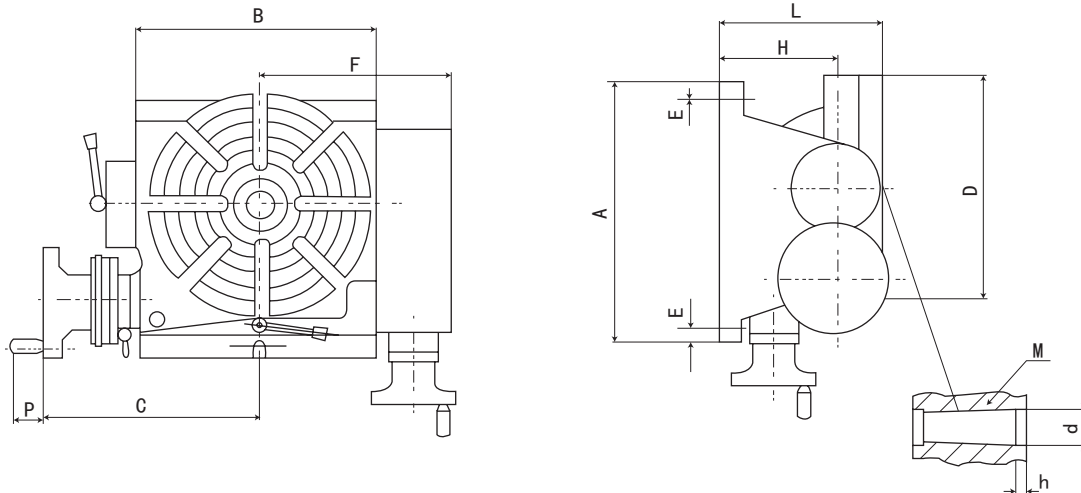
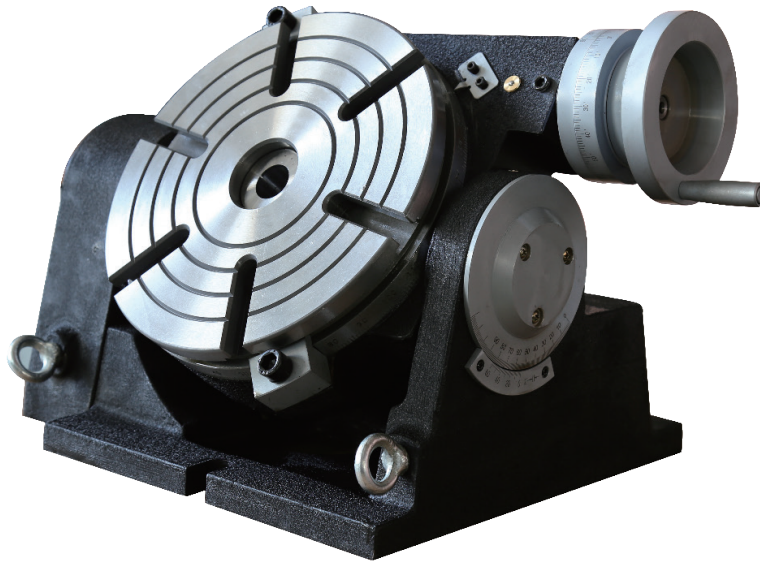


TS...A 系列回转工作台安装尺寸参数: INSTALLATION SKETCH AND DIMENSIONS

规格 / 型号 Mode	TS160A	TS200A	TS250A	TS320A	TS400A	TS500A	TS630A	TS800A	TS1000A
A	260	290	330	410	530	640	920	1000	1170
B	196	238	286	360	450	560	700	890	1080
C	332	368	422	493	612	753	898	1090	1295
D	φ160	φ200	φ250	φ320	φ400	φ500	φ630	φ900	φ1000
G	12	14	14	18	18	22	22	22	-
H	75	80	90	110	140	158.5	160	215	250
J	12	14	14	18	18	22	22	30	-
K	76	91.25	102.5	128.5	180	230	295	364	364
L	194	211	241	273	337	383	488	535	654
M	MT2	MT3	MT3	MT4	MT4	MT5	MT5	MT6	MT6
P	27	27	30.5	44	60	65	60	78	108
Q	125	125	125	125	160	180	220	250	250
d	φ25	φ30	φ30	φ40	φ40	φ50	φ50	φ50	φ50
h	6	6	6	10	10	12	12	14	14

特殊订货 Optional:

分度盘附件 1 套 Dividing plate 法兰盘附件 1 套 Flange 1 set

TSK 系列可倾回转工作台
TSK SERIES TILTING ROTARY TABLE

TSK 系列可倾回转工作台安装尺寸图 DIMENSIONAL SKETCH
特点:

◎ TSK 系列可倾回转工作台是铣床、镗床、钻床的主要附件之一，主要用于加工斜孔或通过一次装夹定位加工除支撑面以外要求从工件中的各方位进行加工的工件。另外，工作台可以垂直位置与尾座配合使用，对工件进行圆周分度钻削和铣削。工作台可从水平位置到垂直位置间 (0° - 90°) 任意调整并锁紧。每个规格的转台分别提供连接不同卡盘的法兰盘，作为特殊订货，并将法兰盘独立包装。另外，为特殊订货所提供的分度盘附件可实现由 2 至 66 间所有整数和由 67 到下 132 间能被 2, 3 和 5 整除的所有整数的分度。

Features:

◎ The TSK series tilting rotary tables are one of main accessories for milling, boring and drilling machines. They can be used for machining, the oblique hole or surface and hole of compound angle at one set-up. Besides this, it is so designed as to be used in a vertical position to carry out center work with a tailstock. This table can be tilted to any position from 0° to 90° and locked. A flange for connecting scroll chuck is special supplied, and be packed independent. For special order, the dividing plates accessory allows the operator to accurately divide the 360° rotation of the clamping surface into divisions of 2 through 66, and all divisible of 2, 3 and 5 from 67-132.

分度头系列 INDEX FIXTURE SERIES

TSK 系列可倾回转工作台

TSK SERIES TILTING ROTARY TABLE

规格 Specifications	TSK160	TSK250	TSK320	TSK400
项目 Items				
工作台直径 Diameter of table mm	φ160	φ250	φ320	φ400
台面中心孔锥度 (莫氏) Morse taper of the center hole	2#	3#	4#	4#
台面定位孔直径 Diameter of the center hole mm	φ25×6	φ30×6	φ40×10	φ40×10
台面 T 型槽宽度 Width of the T-slot mm	10	12	14	14
蜗轮副模数 Modules of worm and worm gear	1.5	2	2.5	3.5
定位键宽度 Width of the locating key.mm	12	14	18	18
台面 T 型槽相邻角度 Adjacent angle of table T-slot	90°	60°	60°	60°
蜗轮副传动比 Transmission ratio of the worm gear	1: 90	1: 90	1: 90	1: 90
工作台圆周刻度 Graduation of the table	360°	360°	360°	360°
工作台可倾角度 Tilting angle	0° -90°	0° -90°	0° -90°	0° -90°
轮台手轮刻度值 Readout of the handwheel	1'	1'	1'	1'
游标最小示值 Minimum value of vernier	10"	10"	10"	10"
可倾游标最小示值 Minimum reading of the tilting vernier	2'	2'	2'	2'
分度精度 Indexing accuracy	80"	60"	60"	60"
最大承载 (卧式) Max.bearing (with table Hor.) kg	100	200	250	300
最大承载 (立式) Max.bearing (with table Vert.) kg	50	100	125	150
净重 Net weight kg	36	80	135	280
毛重 Gross weight kg	44	93	150	305
箱体尺寸 Case dimensions	425×380×300	550×430×330	630×490×395	830×600×460

工作台系列
WORKTABLE SERIES

TSK 系列可倾回转工作台安装尺寸参数 Installation sketch and dimensions

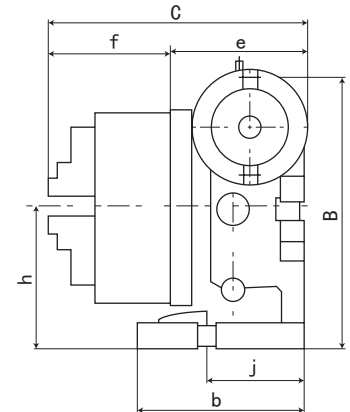
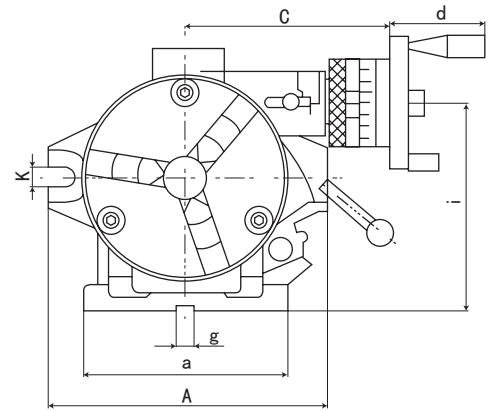
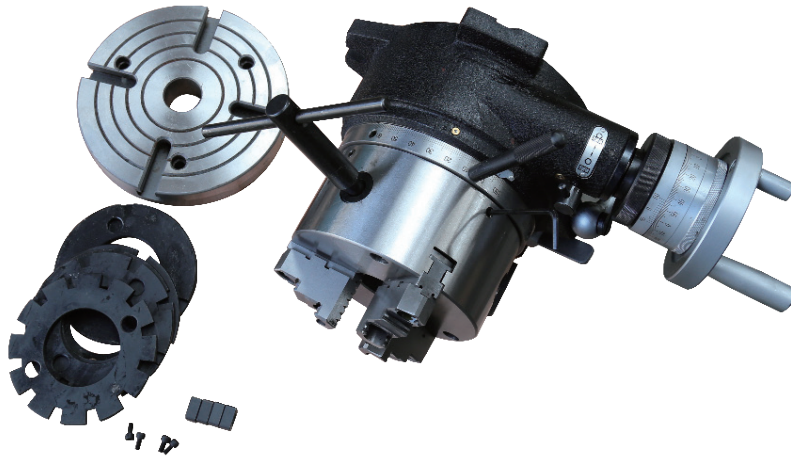
规格 / 型号 Model	TSK160	TSK200	TSK250	TSK320	TSK400
A	255	296	310	380	500
B	172	213	252	322	400
C	168	186	235	252	306
D	φ160	φ200	φ250	φ320	φ400
E	11	14	14	16	16
F	138	175.5	199	241	295
H	100	120	140	175	217
L	160	180	205	255	320
M	MT2	MT3	MT3	MT4	MT4
P	40	40	40	40	50
d	F25	φ30	φ30	40	40
h	6	6	6	10	10

注: 配带附件 Accessories T 型槽螺钉组 2 套 T-slot bolt Set 2sets

特殊订货 Optional: 分度盘附件 1 套 Hole plate 1 set 法兰盘附件 1 套 Flange 1 set

卧式两用强力型快速分度盘

HORIZONTAL/VERTICAL SUPER INDEXING SPACERS



工作台系列
WORKTABLE SERIES

ACCURACY for	CS-6.8	TOLERANCE(Max.)
	CC-6.8	
台面平行度 Parallelism of table surface to base		.0006" .015m/m
台面纵向位置 Axial movement of table surface		.0006" .015m/m
True running of center boss		.0004" .01m/m
Squareness of base to angle face per 12"		.0008" .02m/m
定位精度 Positioning accuracy		45 sec.

规格 / 型号 Mode	夹盘 Chuck				面盘 Face Plate	
	外径 Outer Dia.	通孔直径 Thru Hole Dia.	内径把握 Inner Jaw	外径把握 Outer Jaw	外径 Outer Dia.	厚度 Thickness
CS-6	160 6.30	40 1.57	3-55 0.12-2.17	55-145 2.17-5.71	205 8.07	40 1.57
CS-8	200 7.87	65 2.56	4-85 0.16-3.35	65-200 2.55-7.87	254 10	42 1.65

规格 / 型号 Mode	导向块 Guide Block	炮孔直径 Turret Hole Dia	A	B	C	a	b	c	d	e	f	g	h	i	j	k	毛重 Gross Weight kgs/lbs
CS-6	16 0.63	50 1.97	250 9.84	238 9.37	207 8.15	182 7.17	140 5.51	186 7.32	93 3.66	112 4.41	65 2.56	16 0.63	122 4.80	191 7.52	80 3.15	16 0.63	48 105
CS-8	16 0.63	63 2.48	320 12.60	294 11.57	235 9.27	230 9.06	160 6.30	213 8.39	93 3.66	126.5 4.99	75 2.95	16 0.63	155 6.10	234.67 9.24	95 3.74	20 0.79	74 162

特点:

- ◎ 坚实的铸铁铸造，适用于铣床、钻床和镗床
- ◎ 24 位分度盘、涡轮经淬火硬化和全磨处理
- ◎ 主轴钢件精密磨削
- ◎ 360 度刻度环
- ◎ 刻度环镀铬处理，最小分度单位 5 分
- ◎ 加大中心孔适用于加工大件工件
- ◎ 中心关键引导块可快速、准确校准
- ◎ 用于主轴脱离的偏心蜗轮壳体
- ◎ 把卡盘移走后，可用作立式和卧式的旋转工作台
- ◎ 传动比 1: 90
- ◎ 水平和垂直安装位置

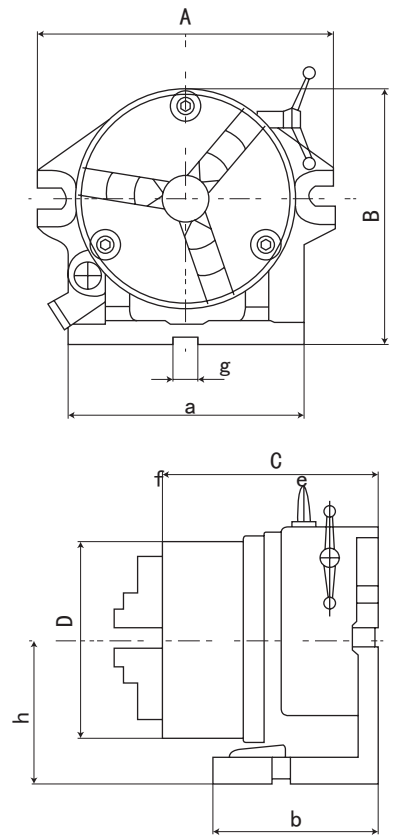
Features:

- ◎ Solid Meehanite casting, specially design for milling, drilling and boring
- ◎ Hardened and ground 24 position master plate and worm gear
- ◎ Precision ground steel spindle
- ◎ 360° graduated ring
- ◎ Chrome plated graduated ring with five minute vernier reading
- ◎ The center through hole is big to be suitable for the lager and big work piece
- ◎ Used the key guide block the center can be corrected both quickly and accurately
- ◎ Eccentric worm housing for spindle disengagement
- ◎ When the chuck is removed the unit can be used as a horizontal and vertical type rotary table
- ◎ The operating handle to rotary table worm gear reduction ratio is 1:90
- ◎ Horizontal and vertical mounting position

分度头系列 INDEX FIXTURE SERIES

立卧两用简易型分度盘

HORIZONTAL/VERTICAL BASIC INDEXING SPACERS



工作台系列
WORKTABLE SERIES

规格 / 型号 Model	Chuck				导向块 Guide Block	炮孔直径 Turret Hole Dia.	A	B	C	D	a	b	h	毛重 Gross Weight (kgs/lbs)
	外径 Outer Dia.	通孔直径 Thru Hole Dia.	内径把握 Inner Jaw	外径把握 Outer Jaw										
CC-6	16 6.30	40 1.57	3-55 0.12-2.17	55-145 2.17-5.71	16 0.63	50 1.97	255 10.04	255 8.86	152 5.98	160 6.30	190 7.48	115 4.53	130 5.12	32 70
CC-8	200 7.87	65 2.56	4-85 0.16-3.35	65-200 2.55-7.87	16 0.63	63 2.48	320 12.60	272 10.71	174 6.85	200 7.87	230 9.06	154 6.06	154 6.06	52 114

Features:

- ◎ 坚实的铸铁铸造，适用于铣床、钻床和镗床
- ◎ 24 位分度盘经淬火硬化和全磨处理
- ◎ 主轴钢件精密磨削
- ◎ 刻度环镀铬处理，最小分度单位 5 分
- ◎ 加大中心孔适用于加工大件工件
- ◎ 中心关键引导块可快速、准确校准
- ◎ 水平和垂直安装位置

特点:

- ◎ Solid Meehanite casting, specially design for milling, drilling and boring
- ◎ Hardened and ground 24 position master plate
- ◎ Precision ground steel spindle
- ◎ Chrome plated graduated ring with five minute vernier reading
- ◎ The center through hole is big to be suitable for the lager and big work piece
- ◎ Used the key guide block the center can be corrected both quickly and accurately
- ◎ Horizontal and vertical mounting position

液压虎钳

HYDRAULIC POWER MACHINE VISES

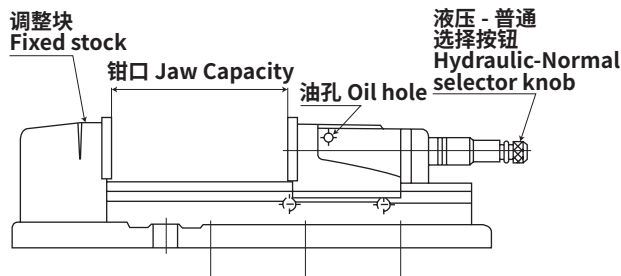
1. 爪盘由特殊钢材所制，经济火硬化和全磨处理
1.Jaw plate are made of special steel, which is hardened and ground

2. 液压助力器的稳固夹持力可通过内置碟簧对工件的弹性夹持有效抗震动和摆动
2.Hydraulic Booster provides a steady clamping force against shocks and vibrations during the operations, since it fastens the work piece resiliently with an aid of the disc-springs mounted inside

3. 高品质铸铁本体经济火硬化和全磨处理可抗偏移、弯曲
3.Body is made of high quality cast iron, which resists deflection or bending and its sliding surface flame hardened and ground

4. 可实现三种张口度，最大张口度可达普通虎钳的三倍
4.It makes possible 3-range jaw opening variation where maximum opening attained is 3 times as large as that of normal machine vises

5. 独特的液压增压力系统可自由调整夹持力，在很小的作用力下，就能产生倍增的夹紧力
5.Clamping force may be freely adjusted with this base line as a guide. It magnifies a small force into an enormous clamping force by virtue of its unique Hydraulic Booster incorporated



单位: mm Unit:m/m

规格 / 型号 Model	三阶夹持位置 3 STEPS CLAMPING POSITION		
	X	Y	Z
HP-4V	0-60	57-115	110-170
HP-5V	0-72	70-140	135-220
HP-6V	0-100	98-200	195-305
HP-8V	0-100	98-200	195-305

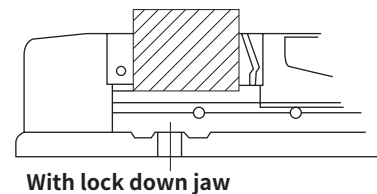
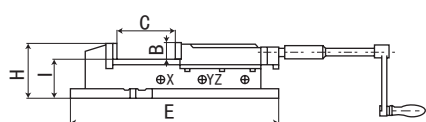
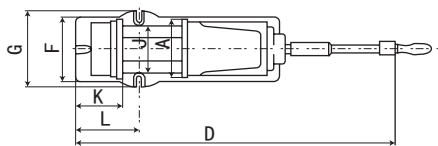
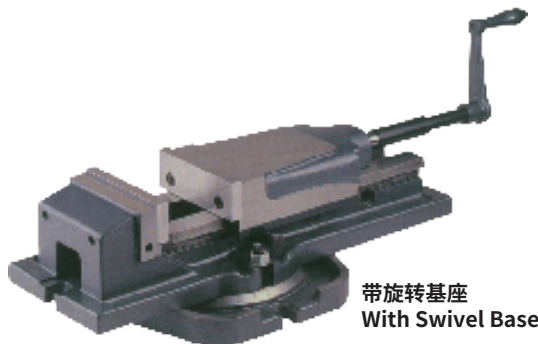
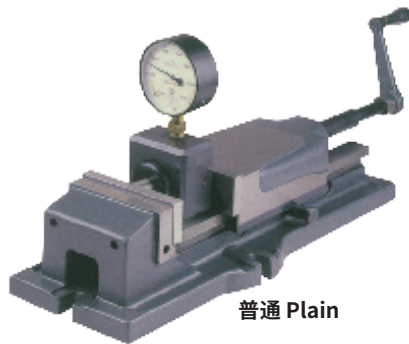
工作台系列
WORKTABLE SERIES

特点:

三种钳口开口度
根据工件大小，移动丝母位置，可实现三种张口度

Features:

3Ranges For Jaw Opening
According the size of the work piece, changing the position of the screw nut, it can have three opening



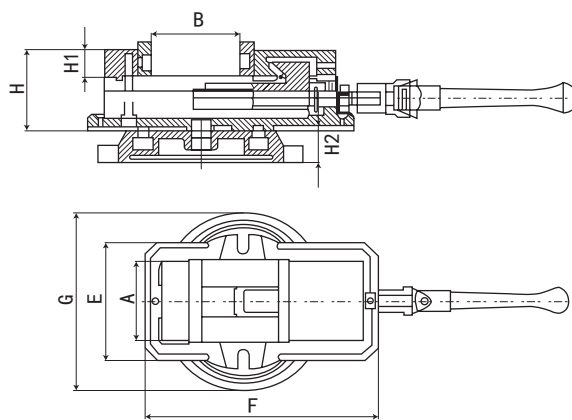
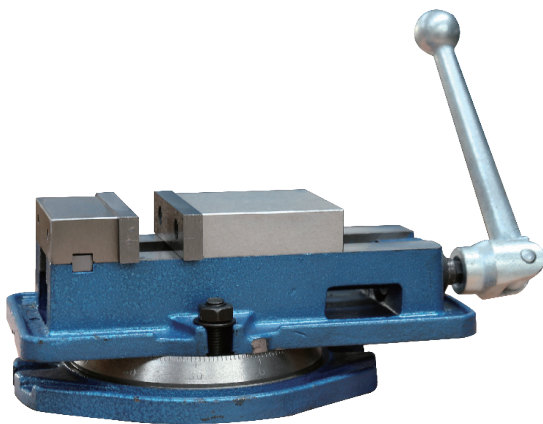
单位: 英寸 / 毫米 Unit inches/mm

规格 / 型号 Model	钳口宽 JAW WIDTH(A)	钳口深 JAW DEPTH(a)	开口 JAW OPENING(c)	D	E	F	G	H	I	J	K	L	最大夹紧力 CLAMPING FORCE	净重 WEIGHT	
														普通 Plain	旋转基座 W/Swivel Base
HP-4V	100 4"	36 1.42"	170 6.7"	525	430	130	160	94	60	78	100	155	2600 kgs 5720 lbs	16 kgs 32 lbs	22 kgs 48.5 lbs
HP-5V	125 5"	46 1.81"	220 8.66"	670	540	165	185	118	72	97	117	185	3500 kgs 7700 lbs	32 kgs 70.4 lbs	42 kgs 92.4 lbs
HP-6V	155 6"	53.5 2.10"	305 12"	960	615	202	232	136	82	115	125	255	4600 kgs 10120 lbs	58 kgs 128 lbs	75 kgs 165 lbs
HP-8V	200 8"	62 2.44"	305 12"	1020	700	240	280	162	100	160	165	266	7200 kgs 15840 lbs	96 kgs 212 lbs	125 kgs 275 lbs

分度头系列 INDEX FIXTURE SERIES

QM 系列机用平口钳

QM MACHINE VISES



规格 / 型号 Model	钳口宽度 Jaw Width(A)	钳口张开度 Jaw Opening(B)	钳口高度 Jaw Height(H1)	H	E	F	G	底座高度 Base Height H2	净重 N.W. (kg)
QM-100	4" 105	4-5/6" 110	1-11/32" 34	3-9/16" 90	6" 153	12-3/4" 234	9-7/32" 234	1-38" 34.5	24
QM-130	5" 130	4-3/4" 120	3-13/16" 97	3-13/16" 97	7-1/8" 181	14-5/16" 363	9-3/4" 248	1-38" 34.5	34
QM-150	6" 154	5-9/16" 160	4-7/16" 112.5	4 - 7 / 16 " 112.5	8-1/2" 215	16-3/4" 425	11 - 13 / 16 " 300	1-5/8" 41.5	45
QM-150X	6" 154	7-1/2" 190	4-7/16" 112.5	4 - 7 / 16 " 112.5	8-1/2" 215	16-3/4" 425	11 - 13 / 16 " 300	1-5/8" 41.5	40
QM-200	8" 200	8-5/8" 218	5-1/2" 140	5-1/2" 140	10-3/4" 273	21-5/8" 550	14-3/8" 366	1-5/8" 41.5	85

特点:

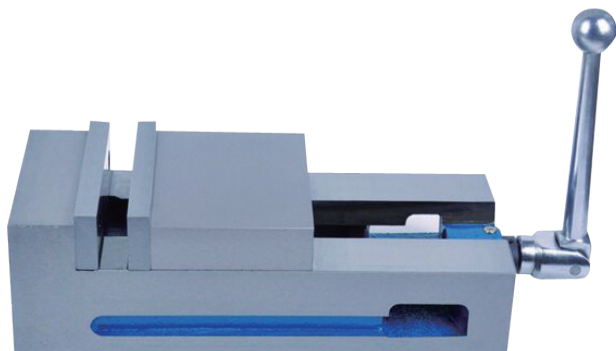
- ◎性能及特点:
- ◎独特结构可使工件有效夹紧。
- ◎可卸式曲柄,可加快紧固工作。
- ◎钳口垫、道轨丝杆经淬火处理。
- ◎两道轨对底面的平行度为 0.005/100mm。
- ◎两钳口垫对道轨面垂直度为 0.015/100mm。

Features:

- Performance and character:
- ◎ Special design to clamp easily.
- ◎ Removable crank can speed up clamping.
- ◎ Hardened jaw plates and leadscrew.
- ◎ Parallelism between guideways and flatness: 0.005/100mm.
- ◎ The perpendicular between jaw plates and guideway: 0.015/100mm.

角固式立横两用精密平口钳

PRECISION GROUND LOCKED TYPE MACHINE VISE



特点:

- ◎精密磨削,立卧两用。
- ◎适用于数控机床和加工中心。
- ◎每个平面的平面度 0.001"。
- ◎每个面的垂直度 0.0004", 平行度 0.0008"。
- ◎底面和侧面均可安装子工作台上。

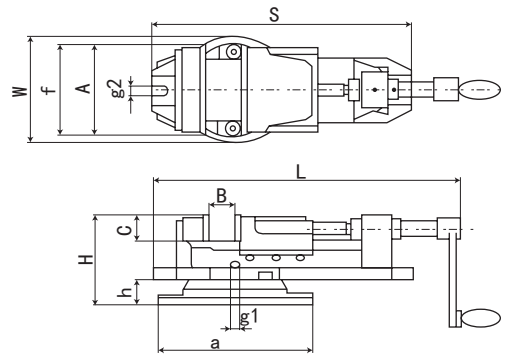
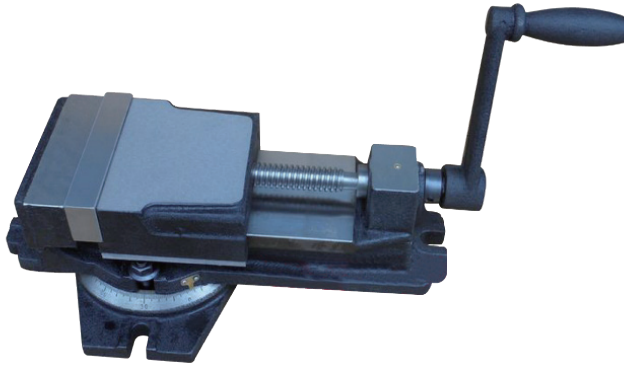
Features:

- ◎ Precision ground for use in horizontal and vertical position.
- ◎ For use on NC/CNC machines.
- ◎ All sides flatness to 0.001" .
- ◎ Accuracy both sides, square to bottom to 0.0004" & parallel to each other to 0.0008" .
- ◎ Can be mounted on side or base.

规格 / 型号 Model	钳口宽度 (mm) Jaw Width	钳口高度 (mm) Jaw Height	钳口张开度 (mm) Jaw opening	毛重 / 净重 (kg) G.W/H.W	包装体积 长 × 宽 × 高 (cm) Volume	包装形式 palking shape
QM16100N	100	32	100	10/9.5	37×16.5×15	纸箱 carton
QM16160N	160	45	200	26/25	48×20×21	纸箱 carton

K 型机用虎钳

K-TYPE MACHINE VISES



规格 / 型号 Model	钳口宽度 Jaw Width(A)	钳口开口度 Jaw Opening(B)	钳口高度 Jaw Height(C)	L	H	S	a	b	f	h	g1	g2	重量 (磅 / 公斤) Weight (lbs/kgs)
TK-100	4" 103	2.76" 70	1.42" 36	12.52" 318	3.30" 84	11.73" 298	6.89" 175	4.72" 120	4.25" 108	1.10" 28	0.47" 12	0.47" 12	22 10
TK-130	5.20" 132	3.35" 85	1.42" 36	15.04" 382	3.82" 97	14.37" 365	8.27" 210	5.91" 150	4.96" 126	1.30" 33	0.51" 13	0.51" 13	35 16
TK-150	6.10" 155	4.49" 114	1.73" 44	18.62" 473	4.33" 110	17.52" 445	10.31" 262	7.24" 184	6.22" 158	1.65" 42	0.63" 16	0.63" 16	60 27
TK-200	7.99" 203	6.25" 159	2.36" 60	24.21" 615	5.71" 145	22.83" 580	13.78" 350	9.29" 236	8.50" 216	1.73" 44	0.71" 18	0.71" 18	133 60

特点:

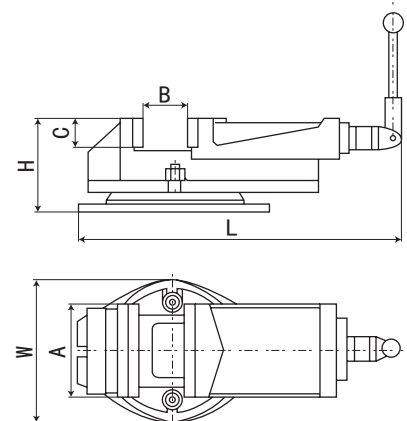
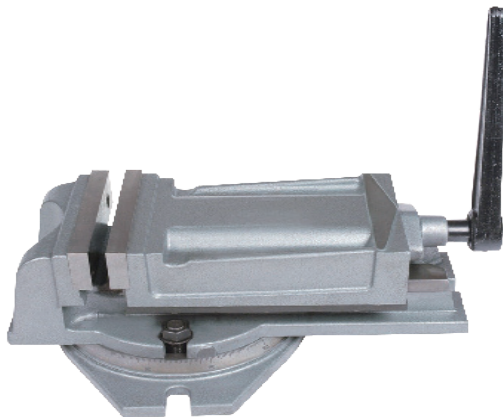
- ◎ 优质铸铁铸造本体、可移动钳口和旋转底座
- ◎ 钳口垫由淬火处理，全磨工具钢所制
- ◎ 用于重载机械可保持精度

Features:

- ◎ Body, moveable jaw and swivel base made of high quality casting
- ◎ Jaw plate of hardened and ground tool steel
- ◎ Built for heavy duty machining and retained accuracy

QH 型机用虎钳

QH-TYPE MACHINE VISES



规格 / 型号 Model	钳口宽度 Jaw Width(A)	钳口开口度 Jaw Opening(B)	钳口高度 Jaw Height(C)	L	W	H	重量 (磅 / 公斤) Weight(lbs/kgs)
QH-100	4" 100	3.15" 80	1.77" 45	12.60" 320	6.30" 160	4.72" 120	37.5 17
QH-125	5" 125	4" 100	1.97" 50	13.78" 350	7.09" 180	5.11" 130	48.5 22
QH-150	6" 152	6" 152	2.1" 51	15.98" 406	9.13" 232	6" 152	74.8 34
QH-200	8" 200	6.30" 160	2.68" 68	18.90" 480	10.63" 270	7.09" 180	140.8 64

特点:

- ◎ 用于铣床、刨床和钻床
- ◎ 坚固的结构可用于重载工作
- ◎ 交流励磁电机螺丝全覆盖
- ◎ 精磨、精加工

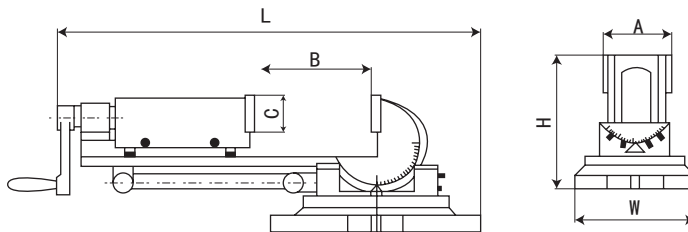
Features:

- ◎ Used in milling, shaping and drilling machines
- ◎ Sturdy construction for heavy duty work
- ◎ Fully covered acme screw
- ◎ Precision ground accuracy machined

分度头系列 INDEX FIXTURE SERIES

万向角度机用虎钳

UNIVERSAL 3-WAY ANGLE MACHINE VISES



特点:

- ◎采用高质量的铸铁材料
- ◎两钳口的平行度 0.025mm/100mm, 两钳口对导轨面垂直度 0.025mm
- ◎采用钳体、双向体、滑座回转可倾机构, 实现三个方向各种方位的定位
- ◎广泛用于机械加工、电加工等负责零件的使用

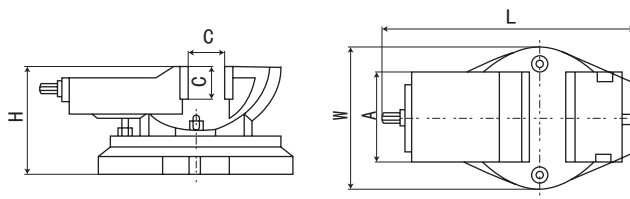
Features:

- ◎ It is made of high-quality cast iron
- ◎ Parallelism 0.025mm/100mm, perpendicularity 0.025mm
- ◎ Attained fitting with a stop in three way, by using such circling delineable structure as vise body and sliding base.
- ◎ It is used on machining and EDM complex parts

规格 / 型号 Model	钳口宽度 Jaw Width(A)	钳口开口度 Jaw Opening(B)	钳口高度 Jaw Height(C)	L	W	H	垂直高度 Vertical Height	重量 (磅 / 公斤) Weight(lbs/kgs)
3W-AV80	3.23" 82	3.54" 90	1.26" 32	16.14" 410	7.48" 190	6.30" 160	15.75" 400	37.4 17
3W-AV100	4.17" 106	4.17" 106	1.50" 38	20.87" 530	9.13" 232	7.28" 185	19.69" 500	74.8 34
3W-AV130	5.31" 135	5.71" 145	1.57" 40	25.20" 640	10.83" 275	8.46" 215	23.62" 600	101 46

可倾斜机用虎钳

2-WAY ANGLE MACHINE VISES



特点:

- ◎采用高质量的铸铁材料
- ◎两钳口的平行度 0.025mm/100mm, 两钳口对导轨面垂直度 0.025mm
- ◎采用回转可倾结构, 钳身在大圆弧导轨上做 90°转动与转盘在底座上 360°转动组合, 获得各种空间角度
- ◎广泛用于机床上加工各种角度的平面、槽、孔

Features:

- ◎ It is made of high-quality cast iron
- ◎ Parallelism 0.025mm/100mm, perpendicularity 0.025mm
- ◎ The vise body can be indexed through 90 degree in vertical direction along large arc-shaped guide way of swivel disc which can be indexed through 360 degree in horizontal direction on the base
- ◎ It is widely used on machine tool in making some kinds of slots, holes and faces

规格 / 型号 Model	钳口宽度 Jaw Width(A)	钳口开口度 Jaw Opening(B)	钳口高度 Jaw Height(C)	L	W	H	重量 (磅 / 公斤) Weight(lbs/kgs)
QHK-100	4" 100	4" 100	1.61" 41	17.13" 435	7.24" 184	5.83" 148	43 19.5
QHK-125	5.04" 128	5.12" 130	1.77" 45	20.08" 510	9.21" 234	6.50" 165	65 29.5
QHK-160	6.3" 160	6" 152	1.97" 50	24.41" 620	10.47" 266	7.64" 194	108 49

ZZ-00330 精密工具平口钳

THE PRECISION TOOL VISES

特点:

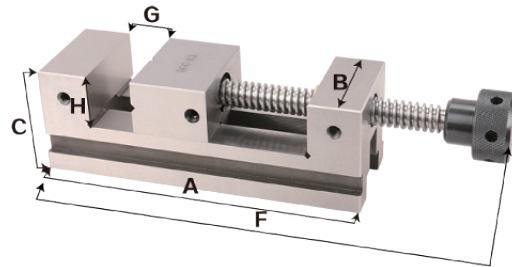
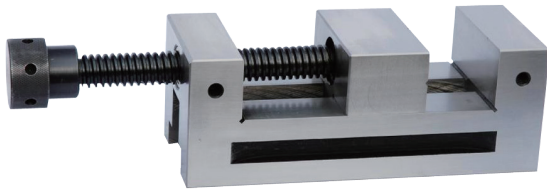
- ◎采用优质合金结构钢制造, 工作面硬度 HRC58-62
- ◎平行度 0.005mm/100mm, 垂直度 0.005mm
- ◎加紧快, 操作灵活
- ◎用于精密测量和检查, 精密磨削及电火花
- ◎在工作时无论横立、竖立、平放皆可保持高的精密度

Features:

- ◎ Made of high-quality alloy steel, the hardness of working surface reaches HRC58-62
- ◎ Parallelism 0.005mm/100mm squareness 0.005mm
- ◎ Quick to clamp and easy to operate
- ◎ Used for precision measurement and in spection precision grinding, EDM and Wire-cutting machine
- ◎ Guarantee high accuracy in any position

ZZ-00332 QGG 系列精密工具平口钳

PRECISION TOOL VISES

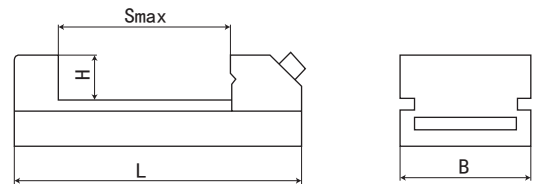
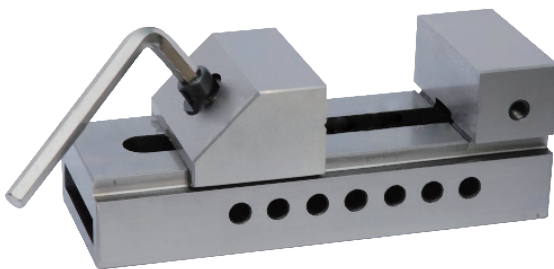


WORKTABLE SERIES
工作台系列

型号 Model	总长 Length(A)	总宽 Width(B)	总高 Height(C)	钳口高度 Jaw Height(H)	最大开口尺寸 Max Jaw Opening(G)	F	重量 KG	其他厂家 Other Factory(C)
QGG50	155	50	50	25	65	193	2.2	50
QGG60	110	60	60	25	55	165	2	60
QGG63	190	63	65	32	85	228	4.3	65
QGG73	210	73	74	35	100	252	6	70
QGG80	220	80	84	40	100	262	7.8	80
QGG88	250	88	88	40	125	292	9.5	85
QGG100	260	100	95	45	125	302	12.5	90
QGG125	300	125	110	50	160	342	19.5	100
QGG150	315	150	110	50	175	365	24.5	100

ZZ-00334 QKG 系列精密工具平口钳

PRECISION TOOL VISES

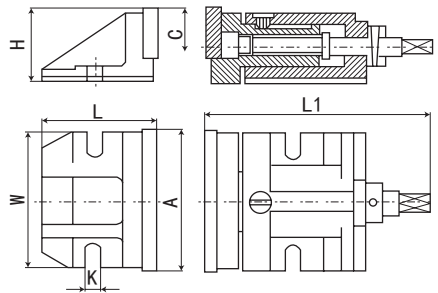
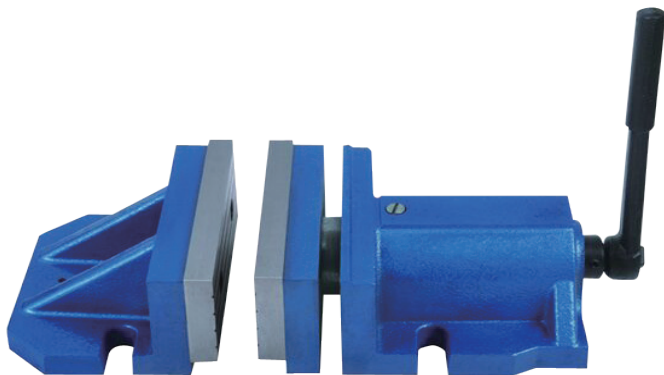


订单号 Order No.	B mm	H mm	Smax mm	L mm	重量 KGS
QKG25	26	9.15	22	65.4	0.5
QKG36	36	20	40	100	1.2
QKG38	38	20	44	105	1.3
QKG50	50	25	65	140	2.0
QKG63	63	32	85	175	3.0
QKG73	73	35	100	190	4.1
QKG80	80	40	100	200	5.5
QKG88	88	40	125	235	7.3
QKG100	100	45	125	245	10.0
QKG125	125	50	160	285	18.0
QKG150	150	50	200	330	21.5
QKG150A	150	50	250	380	23.0
QKG150B	150	50	300	430	24.0

分度头系列 INDEX FIXTURE SERIES

两块自由式机用虎钳

2-PIECE MACHINE VISES



规格 / 型号 Model	钳口宽度 Jaw Width(A)	Clamp Travel	钳口高度 Jaw Height(C)	L	L1	H	W	K	重量 (磅 / 公斤) Weight(lbs/kgs)
FV-6E	6.30" 160	2.76" 70	2.20" 56	5" 127	9" 230	3.15" 80	6" 152	0.75" 19	40 18
FV-8E	8" 204	3.35" 85	2.48" 63	5" 127	11" 280	4" 102	7.88" 200	0.75" 19	60 27

特点:

- ◎可以夹持越长工件，并且可以利用整个机床的工作台面
- ◎钳体由高品质铸铁做成
- ◎钳口淬火，精密磨光
- ◎机械加工键槽确保精确安装

Features:

- ◎ This vise is designed to handle extra long work pieces, and make it possible to utilize the full length of the machine table
- ◎ The body is made of high quality casting
- ◎ Jaw plates are hardened and precision ground
- ◎ Machined keyways enable accurate setup

自由式机用虎钳

FREE MACHINE VISES



规格 / 型号 Model	钳口宽度 Jaw Width	Size	钳口高度 Jaw Height	重量 (磅 / 公斤) Weight(lbs/kgs)
FV-350	75	75×67×150	140×350	15.4 7
FV-450	100	100×90×200	180×450	24.2 11
FV-550	125	125×120×250	250×550	48.4 22

特点:

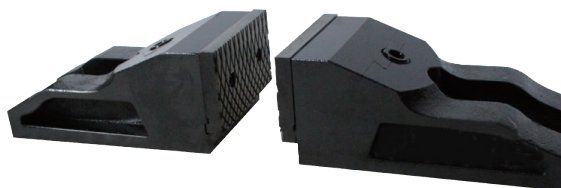
- ◎用于超长工件加工
- ◎钳体由高品质铸铁做成
- ◎钳口淬火，精密磨光

Features:

- ◎ This vise is designed to handle extra long work pieces
- ◎ The body is made of high quality casting
- ◎ Jaw plates are hardened and precision ground

自由式机用虎钳

FREE MACHINE VISES



规格 / 型号 Model	钳口宽度 Jaw Width	Clamp Travel	钳口高度 Jaw Height	重量 (磅 / 公斤) Weight(lbs/kgs)
FSV-62	62	0-5	58	13.2 6
FSV-85	85	0-7	85	26.4 12
FSV-125	120	0-10	95	46.2 21

特点:

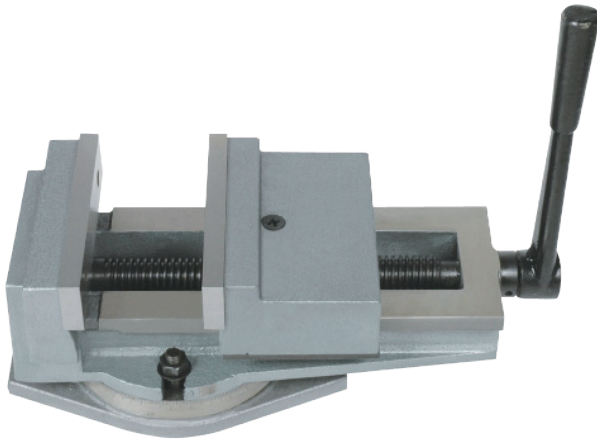
- ◎用于超长工件加工
- ◎钳体由高品质铸铁做成
- ◎钳口淬火，精密磨光

Features:

- ◎ This vise is designed to handle extra long work pieces
- ◎ The body is made of high quality casting
- ◎ Jaw plates are hardened and precision ground

QB 系列机用平口钳

QB MACHINE VISES



特点:

性能及特点:

- ◎采用高质量的铸铁材料
- ◎两钳口的平行度，两钳口中对导轨面垂直度 $\leq 0.025\text{mm}/100\text{mm}$
- ◎广泛用于铣床、钻床等进行各种平面、沟槽、角度、孔等加工

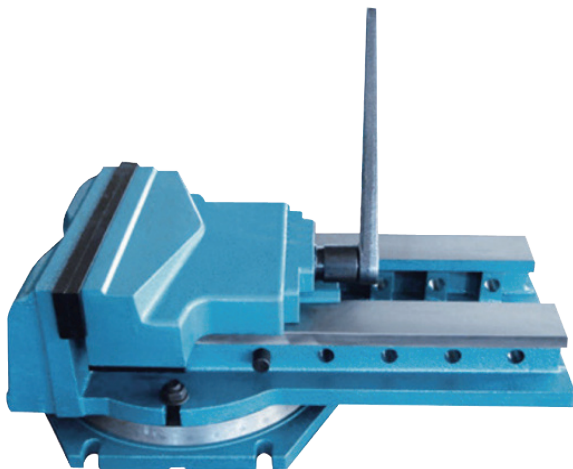
Features:

- ◎ It adopts the high-quality cast irons
- ◎ Both parallelism and verticality about the two jaws are $0.025\text{mm}/100\text{mm}$
- ◎ It is widely used for the milling machine and the drilling machine to process some surface, slots and holes

规格 / 型号 Model	钳口宽度 Width Of Jaw (mm)	钳口高度 Height Of Jaw (mm)	钳口张开度 Max.Opening (mm)	毛重 / 净重 G.W./N.W. (kg)	包装体积 Packing Volume 长 × 宽 × 高 L×W×H (cm)	包装形式 Packing Shape
Q13(QB)136	136	36	170	18/17	43×20×19	纸箱 Carton
Q13(QB)160	160	51	180	24/23	43×20×22	纸箱 Carton
Q13(QB)200	200	64	220	43/41	50×25×23	纸箱 Carton
Q13(QB)250	250	64	280	75/73	62×35×27	木箱 Wooden box
Q13(QB)320	320	81	360	118/115	73×39×26	木箱 Wooden box

QY 系列机用平口钳

QY MACHINE VISES



特点:

- ◎ QY 系列平口钳采用机械传动液压夹紧结构，夹持力永久。
- ◎丝母位置可以根据工件大小调，开口度大。
- ◎用于大型刨床、磨床、铣床、钻床及加工中心。

Features:

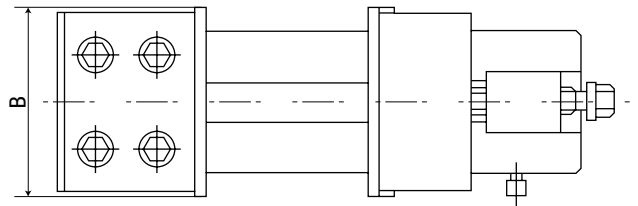
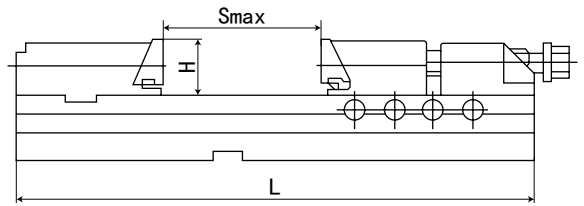
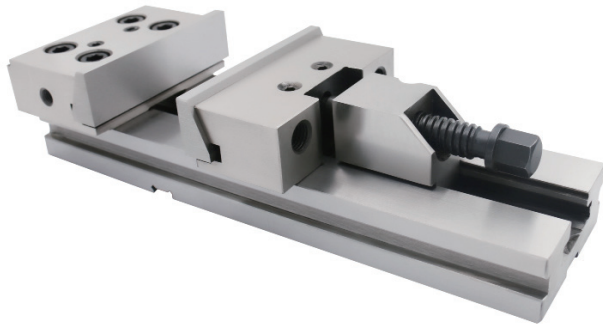
- ◎ QY series flat nose pliers adopt mechanical drive hydraulic clamping structure, with permanent clamping force.
- ◎ The position of the fillet mother can be adjusted according to the size of the workpiece, and the opening degree is large.
- ◎ Used for large planer, grinder, milling machine, drilling machine and machining center.

规格 / 型号 Model	钳口宽度 Width Of Jaw (mm)	钳口高度 Height Of Jaw (mm)	钳口张开度 Max.Opening (mm)	毛重 / 净重 G.W./N.W. (kg)
QY150	152	52	320	60/58
QY200	200	63	350	88/80
QY320	320	81	390	110/100
QY400	400	85	430	169/159

分度头系列 INDEX FIXTURE SERIES

精密组合平口钳

PRECISION MODULAR VISES



规格 / 型号 Model	B (mm)	H (mm)	Smax (mm)	L (mm)	最大夹紧力 (kg)
ZQ125-1	125	40	150	345	3000
ZQ150A-1	150	50	200	420	5000
ZQ150B-1	150	50	300	520	5000
ZQ175A-1	175	60	200	455	6000
ZQ175B-1	175	60	300	555	6000
ZQ175C-1	175	60	400	655	6000
ZQ200A-1	200	65	200	495	10000
ZQ200B-1	200	65	300	595	10000
ZQ200C-1	200	65	400	695	10000
ZQ200D-1	200	65	500	795	10000
ZQ200E-1	200	65	600	895	10000
ZQ300A-1	300	85	200	535	10000
ZQ300B-1	300	85	300	635	10000
ZQ300C-1	300	85	400	735	10000
ZQ300D-1	300	85	500	835	10000
ZQ300E-1	300	85	600	935	10000

特点:

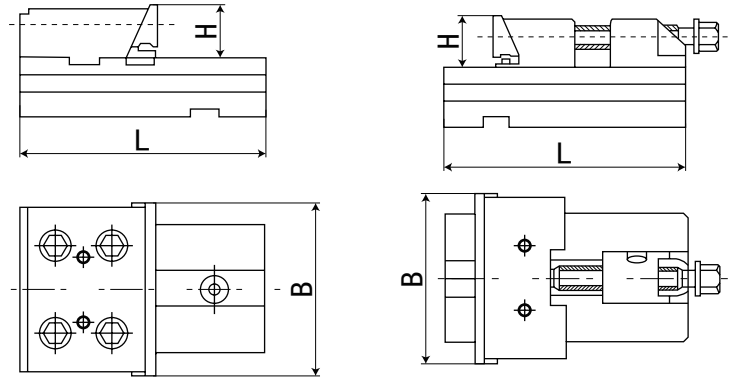
- ◎采用优质合金钢制造
- ◎平行度 0.005mm/100mm, 垂直度 0.005mm
- ◎工作表面硬度 58-62, 表面光洁度好
- ◎具有可拆换底座、固定钳口、活动钳口、夹紧快、操作方便
- ◎广泛用于加工中心等精密机床

Features:

- ◎ Made of high-quality alloy steel
- ◎ Parallelism 0.005mm/100mm, squareness 0.005mm
- ◎ The hardness of working surface is HRC58-62 and precision ground surface
- ◎ It have interchangeable base, fixed/ movable jaws it is quickly to clamp and esdy to operate
- ◎ It is widely used on machining center and other precision machine toole

ZQ84 型分离式组合平口钳

ZQ84 MODULAR VISES



工作台系列
WORKTABLE SERIES

规格 / 型号 Model	B (mm)	H (mm)	L (mm)
ZQ84125-1	125	40	320
ZQ84150-1	150	50	520
ZQ84175-1	175	60	560
ZQ84200-1	200	65	600
ZQ84300-1	300	85	650

特点:

- ◎采用优质合金钢制造
- ◎平行度 0.005mm/100mm, 垂直度 0.005mm
- ◎工作表面硬度 58-62, 表面光洁度好
- ◎可在工作台上组装成单向夹紧方式, 满足加工尺寸较大工件的需要
- ◎广范用于加工中心、数控铣床、镗床、铣床、磨床等机床

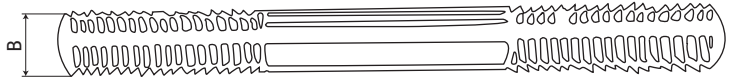
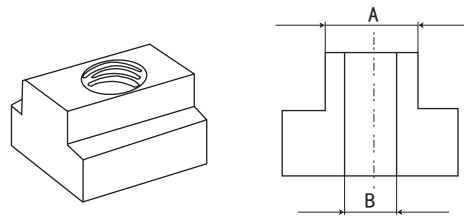
Features:

- ◎ Made of high-quality alloy steel
- ◎ Parallelism 0.005mm/ 100mm, squareness 0.005mm
- ◎ The hardness of working surface is HRC58-62 and precision ground surface
- ◎ Available for compound clamping. Suitable for unlimited length work
- ◎ It is widely used on machining center and other precision machine tools

分度头系列 INDEX FIXTURE SERIES

52 件组合夹具

52-PC STEEL CLAMPING KIT



规格 / 型号 Model	No.	Table Slot(A)	Stud Size(B)	Block Size	Gross Weight (lbs/kgs)
437-CKM	CK-103A	7/16"	3/8"-16	1"	17.6
500-CKM	CK-103B	1/2"	3/8" -16	1"	8
S562-CKM	CK-104A	9/16"	1/2"-13	1"	25.8
S625-CKM	CK-104B	5/8"	1/2" -13	1"	11.7
S687-CKM	CK-105A	11/16"	5/8"-11	1"	32
S750-CKM	CK-105B	3/4"	5/8" -11	1"	14.5
METRIC SIZE					
CK-8	CK-8	10m/m	M8-1.25P	25m/m	15.4/7
CK-10	CK-10	12m/m	M10-1.25P	25m/m	18.7/8.5
CK-12A	CK-12A	14m/m	M12-1.75P	25m/m	24.2/11
CK-12B	CK-12B	15.7m/m	M12-1.75P	25m/m	24.2/11
CK-14	CK-14	16m/m	M14-2.0P	25m/m	27.5/12.5
CK-16	CK-16	18m/m	M16-2.0P	25m/m	31.9/14.5
CK-18	CK-18	20m/m	M16-2.5P	25m/m	68.2/31

特点:

◎ 尺寸为 1"(25mm) 的钢架组合包括 24 个螺柱 (4 个 3", 4", 5", 6", 7", 8" 或 75, 100, 125, 150, 175, 200mm)。
 6 个 T 型螺母
 4 件联接螺母
 6 个法兰盘螺母
 6 个台阶式夹子
 6 个 pas 台阶块
 每个规格的零件都可以单独购买。

Features:

Block size 1" (25mm) Set in steel rack consists of 24 pcs studs (4ea. 3", 4", 5", 6", 7", 8" or 75, 100, 125, 150, 175, 200mm).
 6 pcs T-Nuts
 4 pcs Coupling Nuts
 6 Pcs Flange Nuts
 6 Pcs Step Clamps
 6 pas step Blocks
 The parts of every specification all can be purchased individually.

AP 系列切管器

AP SERIES PIPE CUTTER



特点:

◎ 棘轮式类型
 棘轮式压力机将杠杆臂置于最舒适的位置，以便最终施力。
 用于较重的弯曲。
 手轮推进。

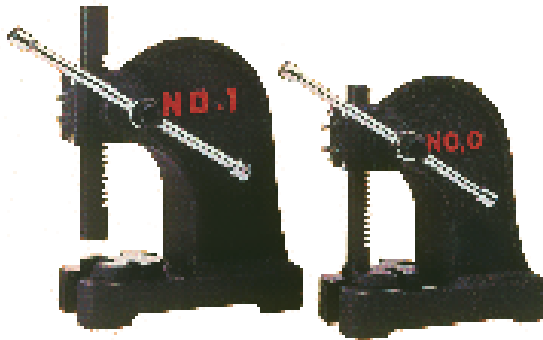
Features:

Ratcheting Type
 Ratcheting Presses put lever arm in most comfortable Position for final application of force.
 For heavier bending.
 Handwheel advance.

规格 / 型号 Model	Approx. tons pressure	Capacity over table	Largest arbor	R a m square	Ram length	Height of press	Base dimension	L e v e r ratio	Weight(lbs/kgs)
AP-R3	3 ton	320 12.60"	64 12"	38 1.50"	457 18"	546 21.50	203×457 8"×18"	20:01	64/140
AP-R5	5 ton	452 17.80"	75 3"	51 2"	700 27.56"	820 32.28	242×665 9.53"×26.18	25:01:00	152/335

手板压力机 & 分度盘附件

ARBOR PRESSES



特点:

- ◎单杠杆型
- 用最好的材料制成的重型结构
- 特殊钢
- 前面和侧面的摇臂调整
- 四个位置的砧板
- 钢制小齿轮和滑块

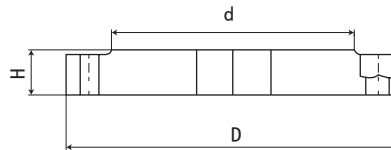
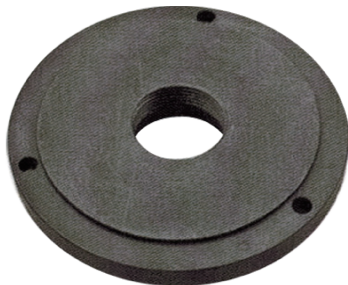
Features:

- Single Leverage Type
- Heavy duty construction made of finest materials
- Special steel
- Front and side gib adjustment
- Four position anvil
- Steel pinions and rams

规格 / 型号 Model	约吨压力 Approx.tons pressure	容量表 Capacity over table	最大心轴 Largest arbor	Press distance between ram and column	Ram square	Ram length	Height of press	底座尺寸 B a s e dimension	重量 (公斤 / 磅) Weight(lbs/kgs)
AP-0	1/2 ton	120 4.73"	30 1.18"	92 3.62"	18 .71"	202 7.95"	265 10.43"	103×233 4.05×9.17"	7.7/17
AP-1	1 ton	145 5.71"	35 1.38"	108 4.25"	25 1"	250 9.84"	300 11.81"	115×245 4.53×9.65"	11/25
AP-2	2 ton	215 8.46"	48 1.89"	150 5.90"	32 1.26"	335 13.19"	445 17.52"	170×380 6.70×14.96"	28/62
AP-3	3 ton	330 13"	63 2.48"	170 6.70"	38 1.50"	465 18.30"	580 22.83"	210×455 8.27×17.91"	62/135
AP-5	5 ton	470 18.50"	75 3"	250 9.84"	51 2"	700 27.56"	820 32.28"	242×665 9.53×26.18"	139/306

法兰盘

FLANGES



规格 / 型号 Model	D	d	H	适用于 Used for model
FLAN-0	138	100	20	RT-HV6,8
FLAN-1	170	10	21	RT-HV8,10
FLAN-2	195	155	24	RT-HV10,12,14

法兰盘

FLANGES



Model No.	Used of model
DP-1	RT-HV6/RT-6

Numbers of holes of dividing plates	
A-Plate	15,16,17,18,19,20
B-Plate	21,23,27,29,31,33
C-Plate	37,39,41,43,47,49

Model No.	Used of model
DP-2	RT-HV8,10,12,14/RT-8,10,12,14

Numbers of holes of dividing plates	
A-Plate	26,30,34,38,41,44,47,51,57
	28,32,37,39,43,46,49,53,59
B-Plate	16,67,71,77,81,87,91,97
	63,69,73,79,83,89,93,99

分度头系列 INDEX FIXTURE SERIES

可调尾座

TAILSTOCK

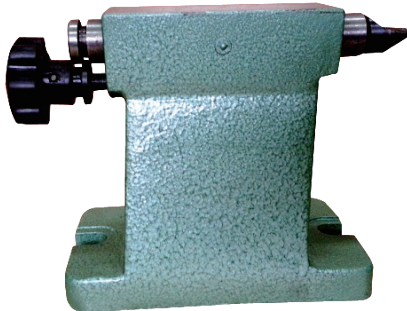


规格 / 型号 Model	顶尖高度 Cente Height		适用型号 Used of model
	最大 Max.	最小 Min.	
TS-1	131 5.15"	97 3.81"	RT-HV6
TS-2	210 8.26"	130 5.12"	RT-HV8,10,12
TS-3	300 11.81"	210 8.27"	RT-HV14

固定尾座

TAILSTOCK

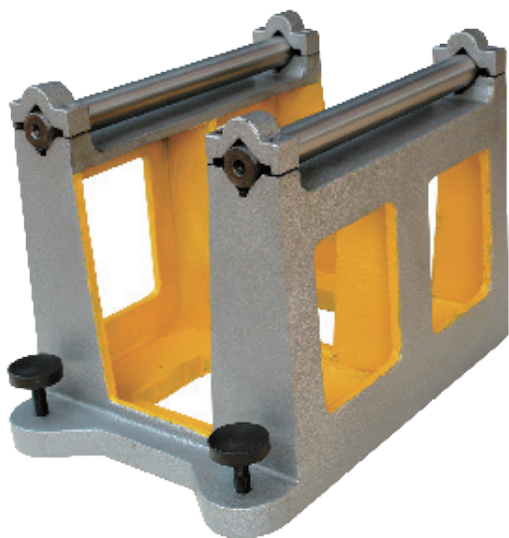
固定尾座 (可选择) TAILSTOCK(OPTIONAL)



规格 / 型号 Model	顶尖高度 Cente Height	适用型号 Used of model
LTS-1	100	F11100A
LTS-2	125	F11125A
LTS-3	160	F11160A
LTS-4	200	F11200A
LTS-5	250	F12250A
LTS-6	300	F12300A
LTS-7	400	F12400A
LTS-8	500	F12500A
LTS-9	1000	F121000A

砂轮平衡架

GRINDING WHEEL BALANCER



特点:

- ◎ 砂轮平衡支架是磨床必须配备的附件, 用它可以静平衡砂轮, 以达到正确使用砂轮的目的, 加水平仪还可以检测精密工件的静平衡。
- ◎ 规格: 500mm、800mm.

Features:

- ◎ Grinding wheel balancer is one of the indispensable attachment for grinding machine. With the help of this grinding wheel balance, the grinding wheel can be static balance, to achieve the purpose of the proper use of grinding wheel, use the frame level can also inspect the static balance of precision instrument parts.
- ◎ Specification: 500mm、800mm.